



ADJUSTMENT INSTRUCTIONS



REPLACEMENT PARTS

For all your replacement part needs, please contact your local dealer



CUSTOMER SERVICE

If you require any additional assistance, please call HERD's Customer Service Team



1-888-543-4373
sales@herd.com



2168 SPRINGFIELD ROAD,
WINNIPEG, MB R2C 2Z2

HERD

SLAM LATCH

ADJUSTMENT INSTRUCTIONS

HERD

This bumper is equipped with Herd's Slam Latch which will require periodic adjustment to ensure optimum performance. The simple, 4-step adjustment process is outlined below.

STEP 1

Open the bumper and loosen the 4 bolts shown in the image on the right. These 4 bolts are located on the inside of the bumper channel — 4 on each side — and should be loosened just until the washers spin freely.

STEP 2

Close the bumper to make the next adjustment.

STEP 3

Standing in front of the bumper tighten the 2 adjustment bolts until rattling stops and the Slam Latch Handle feels secure.

These two (2) bolts are located on the back of the top fold of the aluminum bumper channel. (One is on the driver's side and one is on passenger's side.)

STEP 4

Open the bumper and tighten the 8 bolts (4 on each side). If handle feels secure and latches properly, the adjustment is complete. If the Slam Latch handle is too tight, loosen the adjustment bolts and start again at STEP 1.

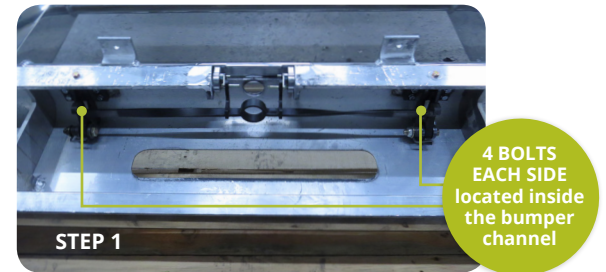
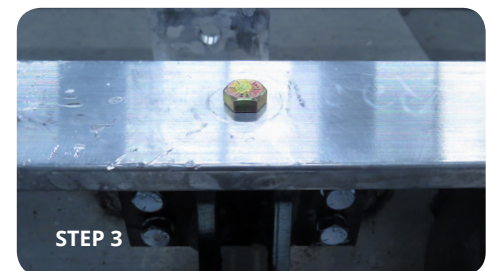
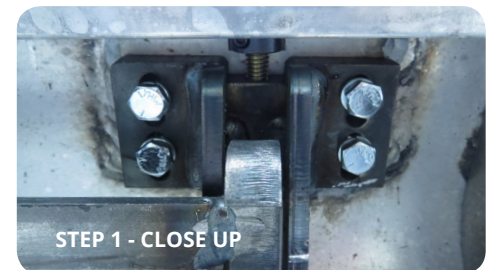


Image shows the back of a Herd bumper in the lowered position.



TROUBLESHOOTING TIPS

In severe duty/off-road applications, the slam latch system is designed to be maintained at a minimal cost. The following gives some guidelines and things to look for to keep your Slam Latch working at peak performance and reliability to offer many years of trouble free service.

Please contact your local dealer for replacement parts

PROBLEM

There is no more adjustment on Slam Latch tension bolts.

SOLUTION

- 1 Replace the inexpensive hinge bolts.
- 2 Reset the Slam Latch adjustment bolts.

PROBLEM

The aluminum bumper is binding on the tow-box when opening or closing.

SOLUTION

- 1 Replace the inexpensive hinge bolts.
- 2 Reset the Slam Latch adjustment bolts.

PROBLEM

The Slam Latch Handle is tight or seems locked.

SOLUTION

WARNING: Prying on the handle will break handle or linkage.

- 1 Turn Slam Latch adjustment bolts clockwise until tension on the handle is released and it becomes operable.
- 2 Open bumper and replace the hinge bolts.
- 3 Reset the Slam Latch adjustment bolts

PROBLEM

The aluminum bumper is rubbing and wearing against the tow-box.

SOLUTION

- 1 Replace the inexpensive hinge bolts.
- 2 Reset the Slam Latch adjustment bolts.

NOTE: Do not adjust the Slam Latch handle in the "closed" position. Doing so will over-tighten the handle causing it to lock.