

- This document shows how to install your new Truck Guard onto your truck.
- Ensure that you have completely read and understand document **S017 - Safety** before beginning this installation procedure.

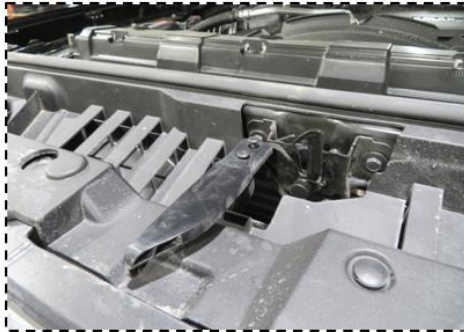


Figure 1a: Remove latch handle



Figure 1b: Remove radiator cover



Figure 1c: Remove fender liner screws (passenger side shown)



Figure 1: Removing the OEM front bumper - Part 1 (Your Truck may not be exactly as shown)

I. Removing the OEM front bumper (please keep all OEM fasteners for reassembling later)

1. Open the hood and remove the latch handle as shown in Figure 1a.
2. Remove the radiator cover by removing the plastic clips, see Figure 1b.
3. Remove the fender liner screws as shown in Figure 1c.



Figure 2a: Remove front grille



Figure 2c: Remove bumper fasteners (driver side shown)

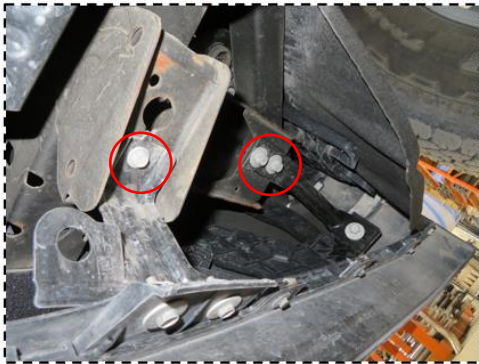


Figure 2b: Remove bottom fasteners (passenger side shown)



Figure 2d: Remove OEM bumper mounts and tow loops

Figure 2: Removing the OEM front bumper - Part 2 (Your Truck may not be exactly as shown)

4. Remove the front grille by first removing top 4 screws, then pull the front grille away from truck to release clips, see Figure 2a.
5. Remove the bottom mounting fasteners (3 per side). The fasteners can be accessed from under the truck, see Figure 2b.
6. Remove the 4 bumper fasteners hidden inside the bumper by facing the truck, looking down the bumper, and pull back the plastic flap. Figure 2c shows the 2 fasteners on driver side.
7. Unplug the main harness and block heater cable (if applicable). Remove the OEM front bumper.
8. Remove the 2 truck bumper mounts (3 front fasteners per side, red circles in Figure 2d).
9. Remove the tow loops (if applicable). Keep both tow loops and OEM fasteners for later usage.
10. Reattach the front grille, the radiator cover, and the latch handle back to the truck. Keep the main harness and block heater cable (if applicable) unplugged.

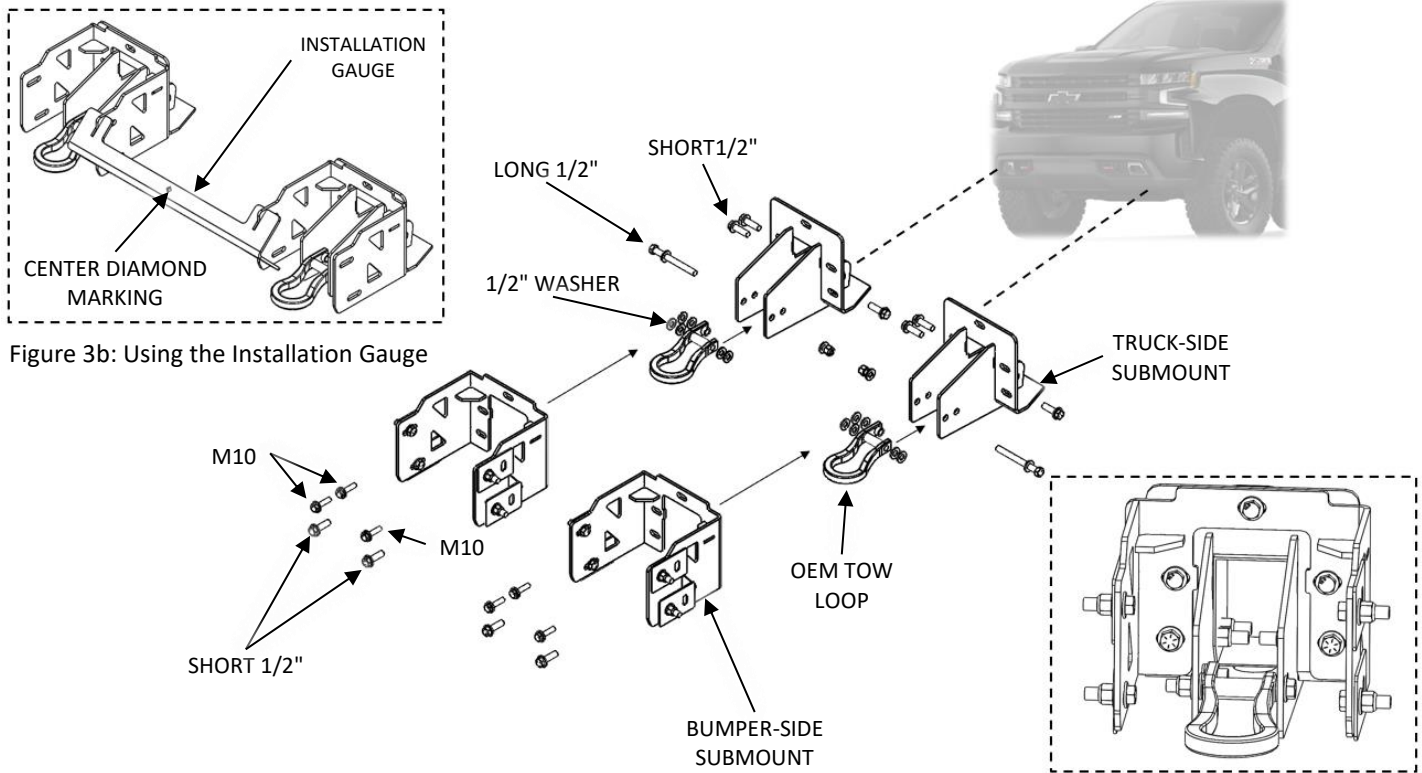


Figure 3a: Submounts installation

Figure 3: Installing the Submounts

II. Installing the Submounts

1. Install the Truck-Side Submounts, shown in Figure 3, using the provided fasteners (short 1/2") from the side of truck frame. **Torque the short 1/2" fasteners to 96 ft-lb.**
2. Install the OEM tow loops to the Truck Side Submounts using the OEM and provided long 1/2" fasteners (use two 1/2" washer per side as spacer), see Figure 3. **Torque the long 1/2" fasteners to 96 ft-lb.**
3. Install the Bumper-Side Submounts to the front of the Truck-Side Submounts using the provided fasteners (M10 and short 1/2"), fasten loosely. The Submounts set up should look like Figure 3a.
4. Use the Installation Gauge to position the Submounts; the center diamond marking should line up with the center of the truck, see Figure 3b.
5. With the Installation Gauge still in position, tighten all mounting fasteners. **Torque the M10 fasteners to 48 ft-lb; torque the short 1/2" fasteners to 96 ft-lb.**
6. Remove the Installation Gauge.



Figure 4a: OEM fog light installation (driver side shown)

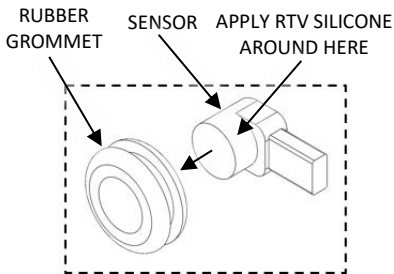


Figure 4d: Sensors installation

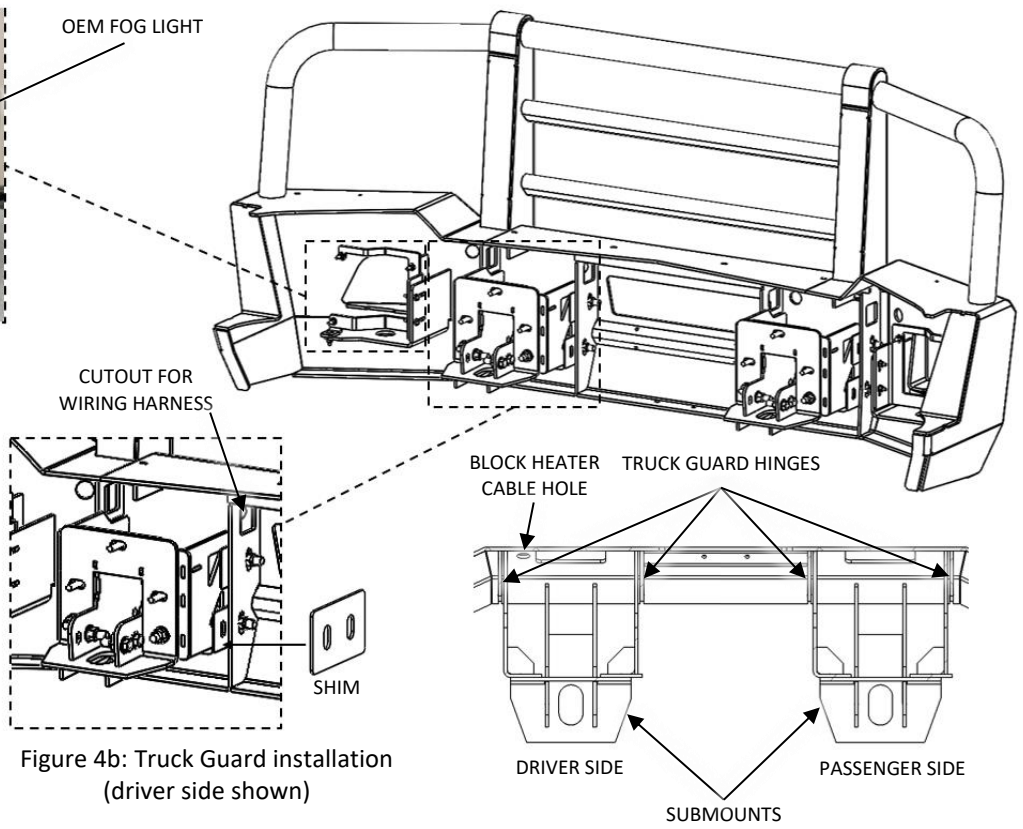


Figure 4b: Truck Guard installation (driver side shown)

Figure 4c: Submounts position (top view)

Figure 4: Installing the Truck Guard (view from behind)

III. Installing the HERD Truck Guard

1. Remove the OEM fog lights from the OEM front bumper (if applicable).
2. Install the OEM fog lights on the HERD Truck Guard using the provided OEM Light Brackets as shown in Figure 4a.
3. Remove the block heater cable from the OEM front bumper (if applicable). Install the cable to the provided hole on the HERD Truck Guard (at the front, next to driver's side towing cut-out).
4. Attach the HERD Truck Guard to the Submounts, **follow the position shown in Figure 4b and Figure 4c**. Use the provided Shims if required. Adjust the HERD Truck Guard if necessary. Tighten all mounting fasteners (1/2") after adjustment, and **torque to 96 lb-ft**.
5. If the truck has parking sensors, remove them from the OEM front bumper (sensor's bezel is not required) together with wiring harness. Take note of the location of each sensor and harness. Apply RTV silicone all around the cylindrical section of the sensors, then insert the sensors through the rubber grommets on the HERD Truck Guard, see Figure 4d. Ensure locations of the sensors match where they were located on the OEM front bumper.
6. Let the adhesive cure in room temperature. Plug main harness into each sensor, and each fog light. Plug main harness and block heater cable back to the truck. Check if each sensor functions normally.

Important: Check mounting point's hardware after the first 5000 km and every 3-6 months. Re-torque if necessary.