

HERD DG10L2-02 Installation Procedure

- This document shows how to install your new Truck Guard onto your truck.
- Ensure that you have completely read and understand document **S017 - Safety** before beginning this installation procedure.
- You will require the following tools and supplies for installation:

Screwdrivers	Pliers	Wire Ties	Level
Wrenches (various sizes)	Sockets (various sizes)	Socket Wrenches (various sizes)	

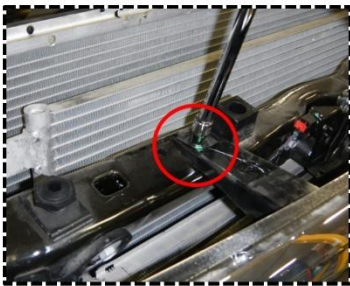


Figure 1b: Remove front grille



Figure 1a: Remove engine cover

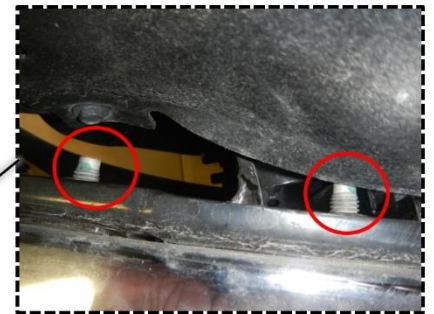


Figure 1c: Remove front bumper (view from top)



Figure 1e: Remove OEM tow loop



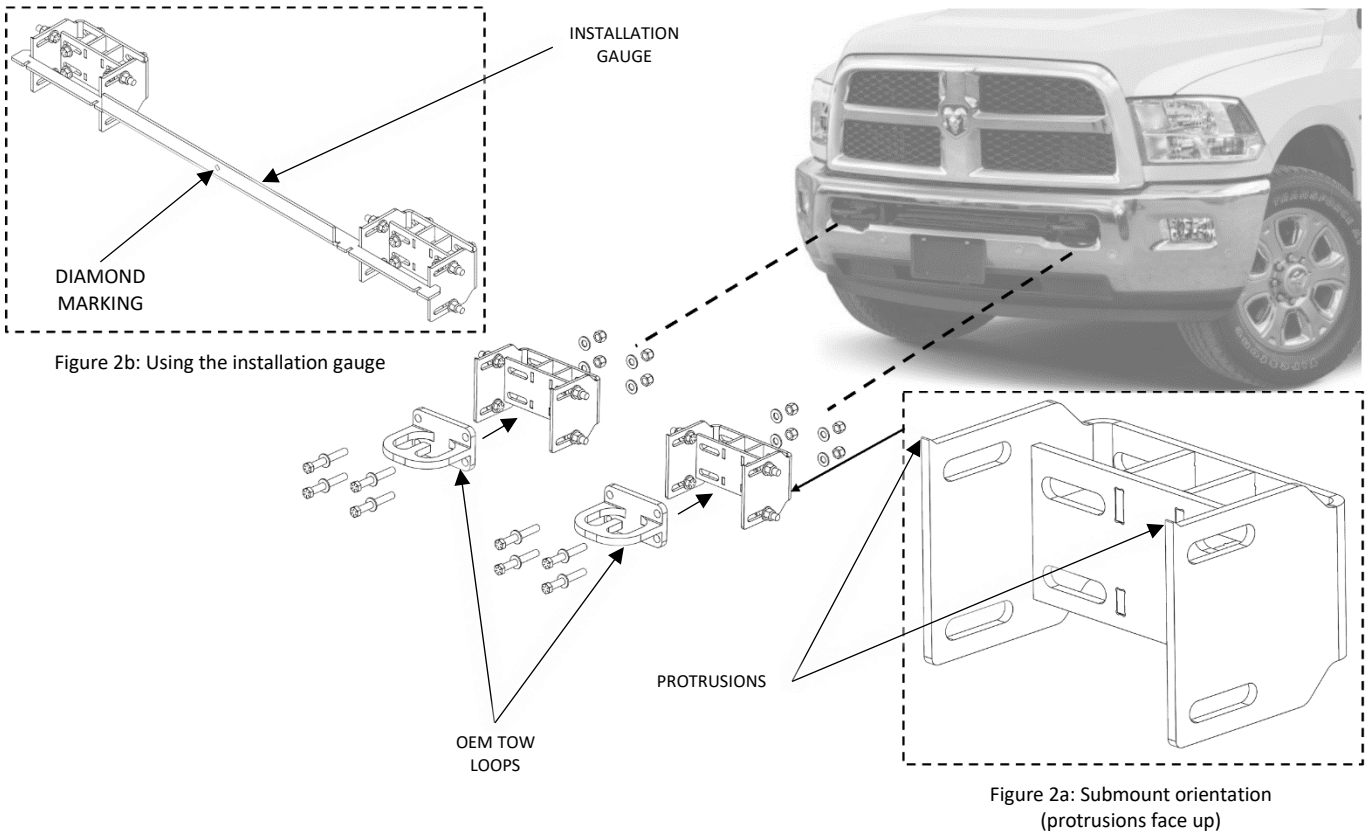
Figure 1: Remove the OEM front bumper



Figure 1d: Remove front bumper (view from under)

I. Removing the OEM front bumper

1. Unplug the main harness and detach the block heater cord (if applicable) from the OEM front bumper before removing it.
2. Open the hood and remove the engine cover, see Figure 1a.
3. Remove the front grille by removing top 4 screws, Figure 1b shows 1 of the 4 screws. Then pull the front grille away from truck to release clips.
4. Remove the 8 fasteners to remove the OEM front bumper (4 per side). The top fasteners can be accessed from the top of OEM bumper, see Figure 1c. The bottom fasteners can be accessed from under the truck, see Figure 1d.
5. Remove the OEM tow loops, see Figure 1e. The OEM tow loops will be reused with HERD Truck Guard.
6. Re-attach the front grille and engine cover after removing OEM front bumper.



II. Installing the submounts

1. Install the OEM tow loops and the submounts to the truck following the orientation shown in Figure 2.
IMPORTANT: The submounts' protrusions must be facing up, see Figure 2a. Use the provided bolts and nuts, fasten loosely.
2. Use the installation gauge to position the submounts, the center diamond marking should line up with the center of the truck, see Figure 2b.
3. With the installation gauge still in position, tighten all mounting fasteners, and torque to **110lb-ft**.
4. Remove the installation gauge.

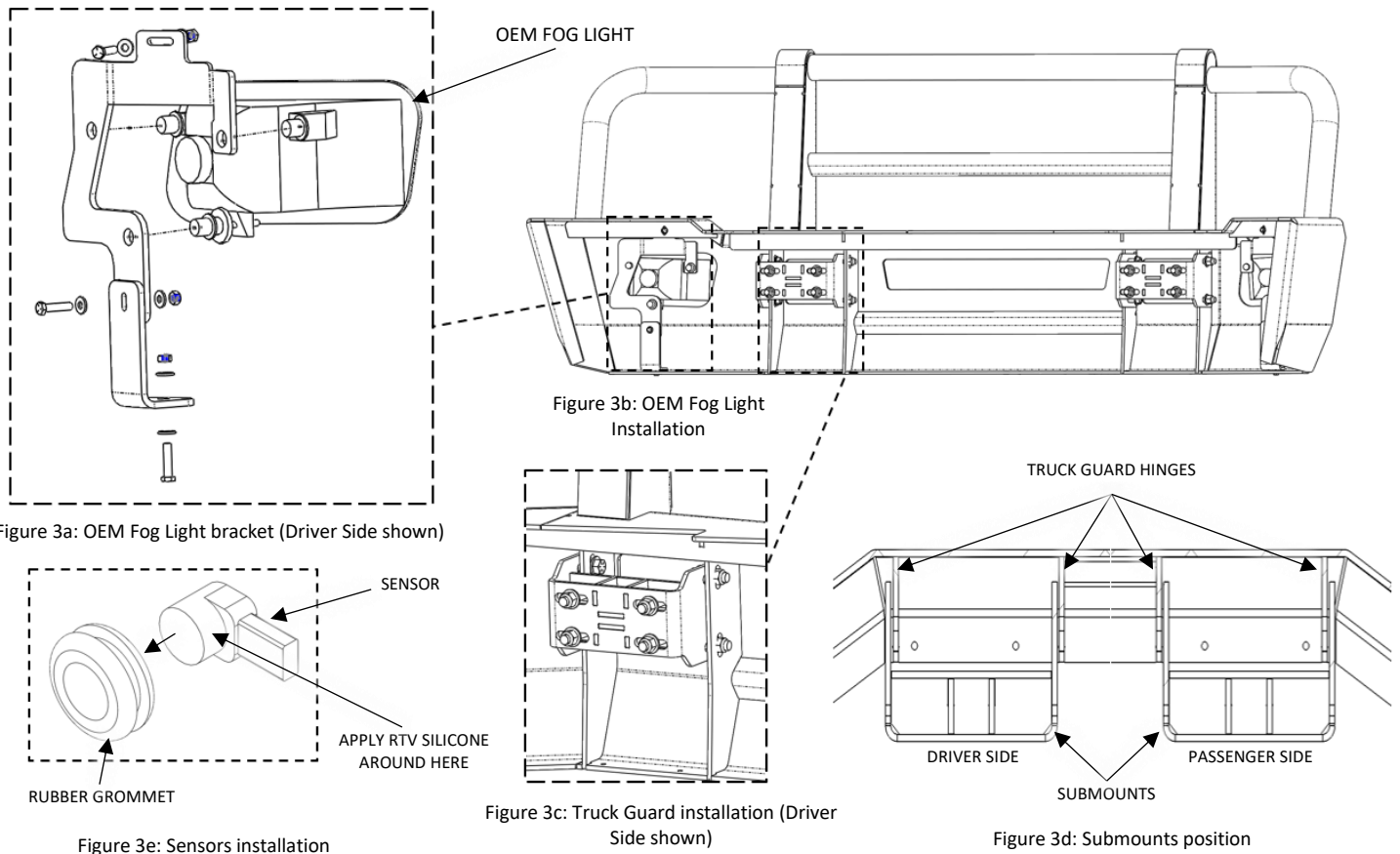


Figure 3: Install the Truck Guard (view from behind)

III. Installing the HERD Truck Guard

1. Remove the OEM fog lights from the OEM front bumper (if applicable).
2. Install the OEM fog lights to the provided brackets as shown in Figure 3a. Install the OEM fog lights with bracket to the HERD Truck Guard as shown in Figure 3b.
3. Install the HERD Truck Guard to the submounts, **follow the position shown in Figure 3c and Figure 3d**. Adjust the HERD Truck Guard if necessary. Tighten all mounting fasteners after adjustment, and **torque to 110lb-ft**.
4. If the truck has parking sensors, remove them from the OEM front bumper (sensor's bezel is not required) together with wiring harness. Take note of the location of each sensor and harness. Apply RTV silicone all around the cylindrical section of the sensors, then insert the sensors through the rubber grommets on the HERD Truck Guard, see Figure 3e. Ensure locations of the sensors match where they were located on the OEM front bumper.
5. Plug the harness into each sensor, each fog light and to the truck. Wait until the adhesive cure then check if each sensor functions normally. Clean up excess wiring (harness and block heater) with zip ties.

Important: Check mounting point's hardware after the first 5000 km and every 3-6 months. Re-torque if necessary.