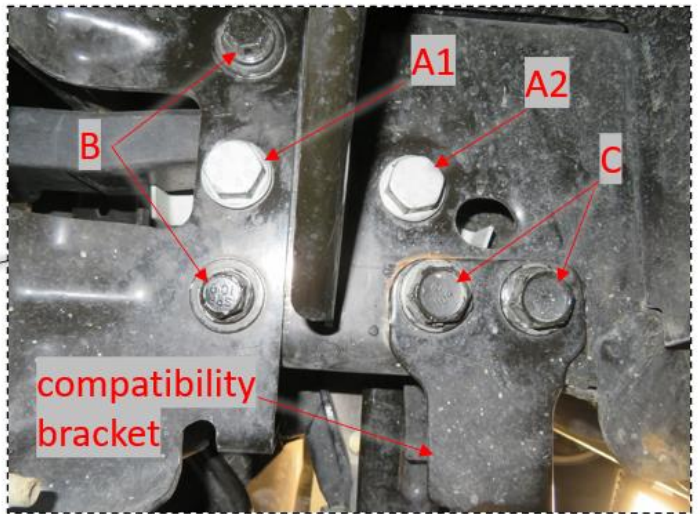


HERD DG12L2-02 Installation Procedure

- This document shows how to install your new Truck Guard onto your truck.
- Ensure that you have completely read and understand document **S017 - Safety** before beginning this installation procedure.
- You will require the following tools and supplies for installation:

Screwdrivers	Pliers	Wire Ties	Level
Wrenches (various sizes)	Sockets (various sizes)	Socket Wrenches (various sizes)	Hex Keys (if truck equipped with power winch)
Threadlocker - blue (if truck equipped with power winch)	RTV Silicone (if truck equipped with parking sensors)		



← Front of truck

Figure 1a: Remove fasteners (driver side view shown)

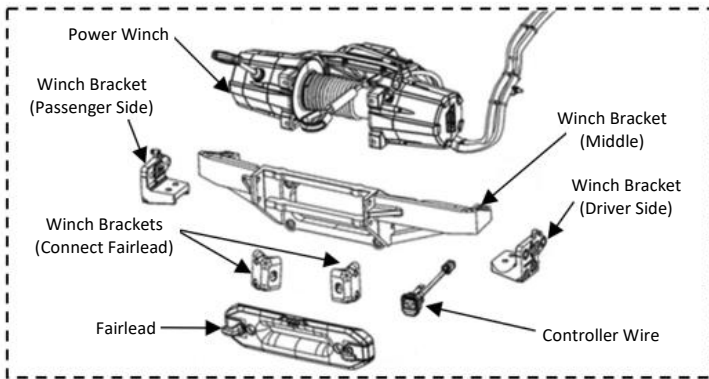


Figure 1b: OEM power winch parts



Figure 1: Removing the OEM front bumper

I. Removing the OEM front bumper

1. Unplug the main harness and detach the block heater cord (if applicable) from the OEM front bumper.
For truck with power winch, unplug the power cable and controller wire, see Figure 1b.
2. Remove fasteners A1 (1 per side) and A2 (1 per side) to remove the tow loops for reinstallation, see Figure 1a (if applicable).
NOTE: For Diesel Truck, reattach fasteners A2 (1 per side) after tow loop removal.
3. Remove the OEM bumper by removing fasteners B (2 per side) as shown in Figure 1a.
For truck with power winch, remove 2 fasteners in the front of fairlead to remove the fairlead for later usage, see Figure 1b.
4. Remove fasteners C (2 per side) to remove compatibility brackets (1 per side), see Figure 1a.

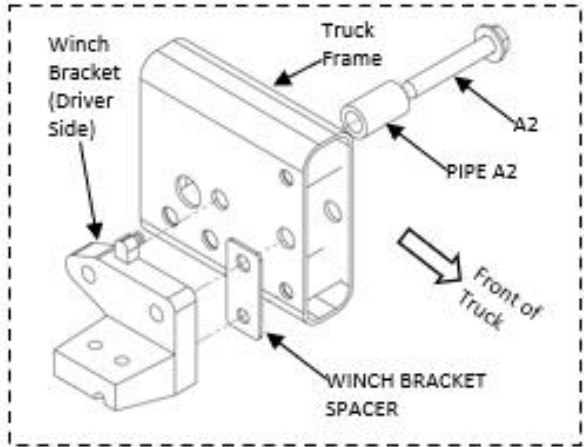


Figure 2a: Pipe A2 and Winch Bracket Spacer installation (driver side view)

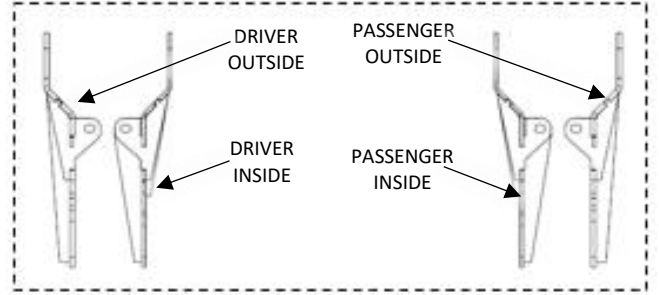


Figure 2c: Submounts orientation (top view from truck side)

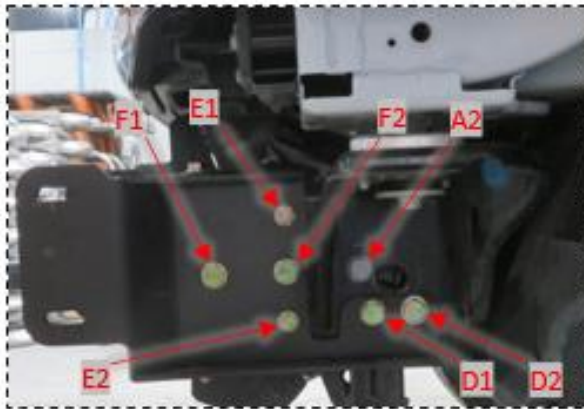


Figure 2b: Submounts installation (driver side view)

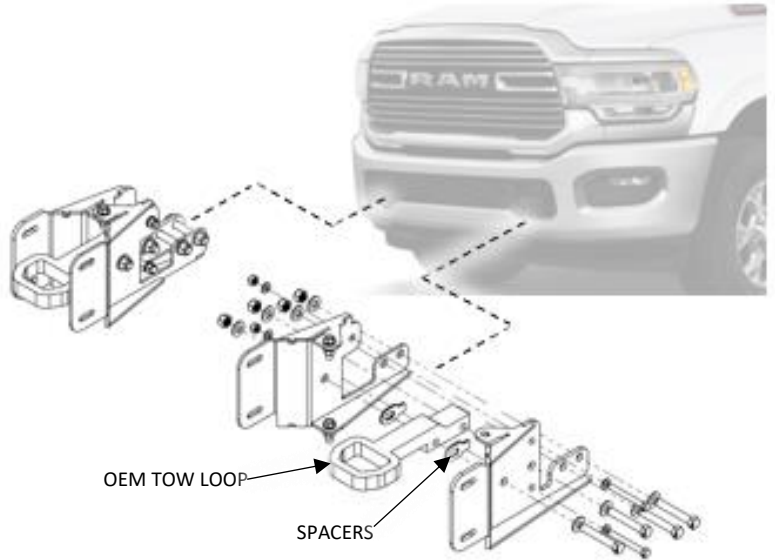


Figure 2d: OEM tow loops and Spacers installation (truck has OEM tow loop)



Figure 2f: Submounts installation (driver side front view)

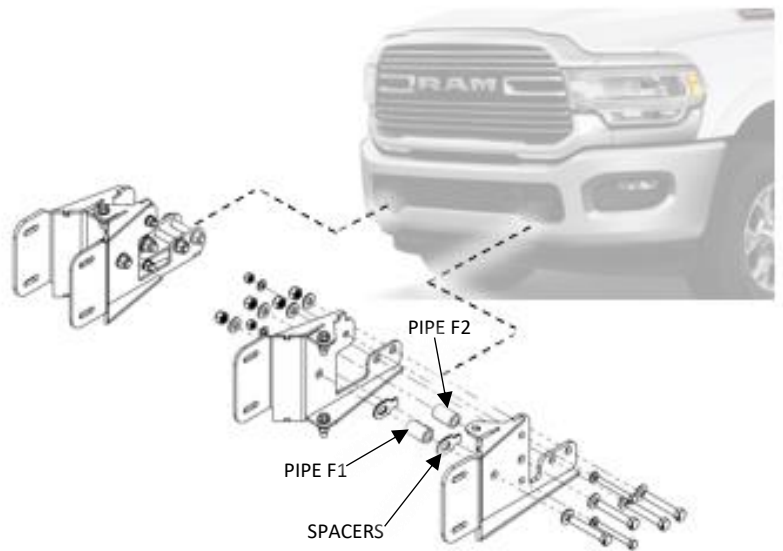


Figure 2e: Pipes F1, F2 and Spacers installation (truck has no OEM tow loop)

Figure 2: Installing the Submounts

II. Installing the Submounts

1. For truck with power winch, put Pipe A2 into truck frame (where OEM fastener A2 is) and insert OEM fastener A2, see Figure 2a. Winch Bracket Spacer should be placed between winch bracket (driver/passenger side) and the truck frame as Figure 2a shown.

NOTE: Grind Pipe A2 as needed to ensure it can fit into the truck frame.

2. Install Submounts with provided Fasteners D1, D2 (M16) and E1, E2 (M12) as shown in Figures 2b and 2c.

NOTE: For Diesel Truck, Herd recommends placing one additional washer on the head side of Bolt D1 to avoid any interference with the intercooler bracket.

NOTE: For truck with power winch, use threadlocker (blue) on Fasteners E2, F2 and A2 for locking OEM winch brackets (driver side and passenger side).

3. Depends on your truck:

- **For truck with OEM tow loops**, install with provided Fasteners F1, F2 (M16) and Spacers, see Figures 2b and 2d. Spacers should be placed between OEM tow loops and Submounts. Herd has found the best arrangement to be placing one 1/16" and one 1/8" Spacer. You may need to find the best combination of Spacers for your truck.

- **For truck without OEM tow loops**, install Pipes F1 and F2 with provided Fasteners F1 and F2 (M16) and Spacers, see Figure 2b and 2e. The Pipe F1 and Spacers should be placed between the Submounts. Herd has found the best arrangement to be placing one 1/16" and one 1/8" Spacer. You may need to find the best combination of Spacers for your truck. NOTE: Grind the Pipe F2 as needed to ensure it can fit into the truck frame.

4. Secure Submounts at the top and bottom mounting locations with provided Fasteners G (1/2"), see Figure 2f.

Figure 2f is a generic photo, your truck may not look exactly as shown.

5. Tighten all mounting fasteners, the side Fasteners D1, D2, E1, E2, F1, F2 and A2 (if applicable) should be tightened before Fasteners G.

Torque the M12 to 84 lb-ft, the M16 to 208 lb-ft, and the 1/2" to 96 lb-ft.



Figure 3a: OEM fog light installation

OEM FOG LIGHT

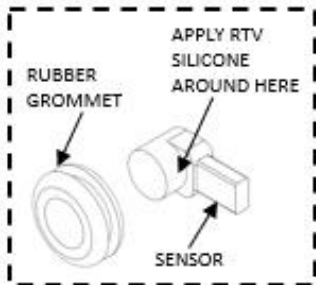
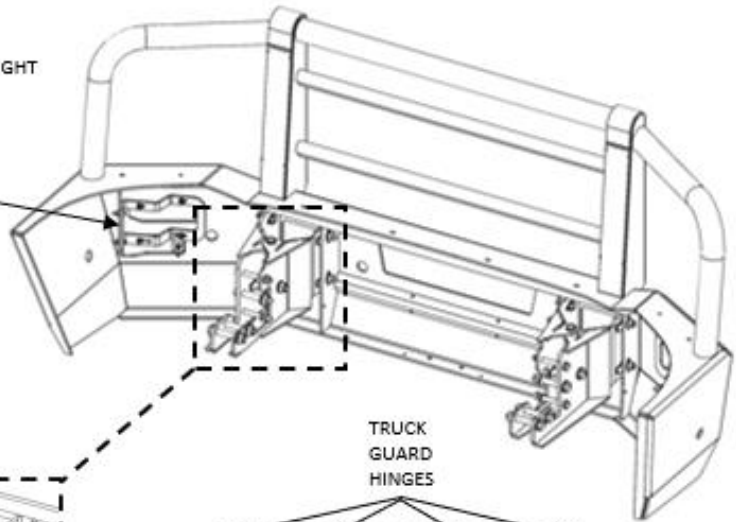


Figure 3d: Sensors installation

RUBBER GROMMET
APPLY RTV SILICONE AROUND HERE
SENSOR

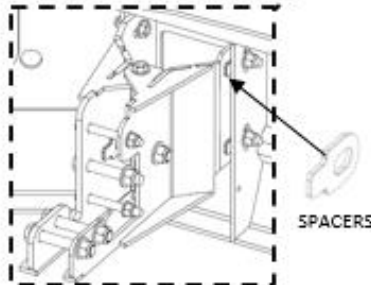


Figure 3b: Truck Guard installation (driver side shown)

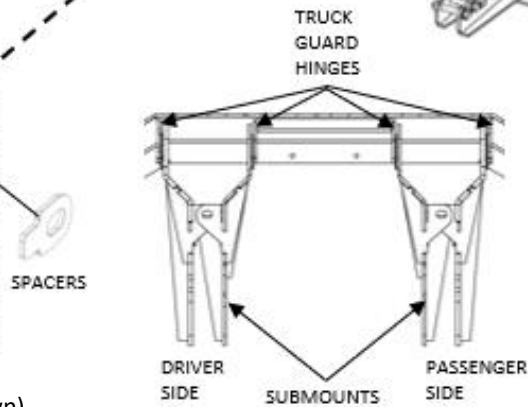


Figure 3c: Submounts position

TRUCK GUARD HINGES

DRIVER SIDE SUBMOUNTS PASSENGER SIDE

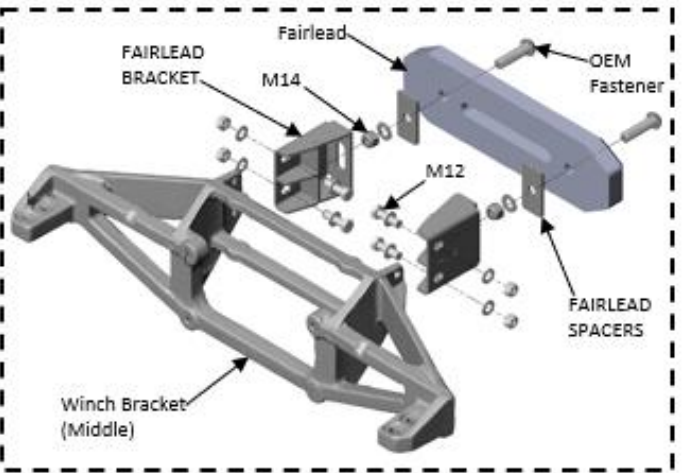


Figure 3e: Fairlead installation

Fairlead
OEM Fastener
FAIRLEAD BRACKET
M14
M12
FAIRLEAD SPACERS
Winch Bracket (Middle)

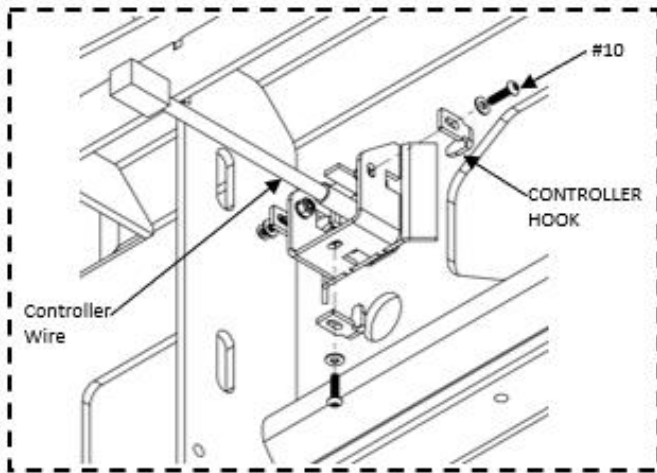


Figure 3e: Controller wire installation (driver side shown)

#10
CONTROLLER HOOK
Controller Wire

Figure 3: Installing the Truck Guard (view from behind)

III. Installing the HERD Truck Guard

1. Remove the OEM fog lights from the OEM front bumper (if applicable).
2. Install the OEM fog lights with the provided Brackets to the HERD Truck Guard as shown in Figure 3a.
3. If the truck has power winch:
 - Remove controller wire from the OEM front bumper.
 - Insert controller wire through the front cut-out in the HERD Truck Guard. Install controller wire with provided Fasteners (#10) and Controller Hooks after adjustment, see Figure 3e.
 - Replace OEM winch brackets (connect fairlead) with provided Fairlead Brackets with Fasteners (M12), see Figure 3f.
 - Install fairlead with OEM and provided fasteners (M14) after HERD Truck Guard installed, see Figure 3f. Adjust the fairlead and use provided Fairlead Spacers if necessary. Tighten fasteners after adjustment.

Torque the #10 to 59 lb-in, the M12 to 84 lb-ft and the M14 to 133 lb-ft.

4. Install the HERD Truck Guard to the Submounts, **follow the position shown in Figure 3b and Figure 3c.** Adjust the HERD Truck Guard and use provided Spacers (1/16" and/or 1/8") if necessary. Tighten all mounting fasteners (1/2") after adjustment, and **torque to 96 lb-ft.**
5. If the truck has parking sensors, remove them from the OEM front bumper (sensor's bezel is not required) together with main wiring harness. Take note of the location of each sensor and harness. Apply RTV silicone all around the cylindrical section of the sensors, then insert the sensors through the rubber grommets on the HERD Truck Guard, see Figure 3d. Ensure locations of the sensors match where they were located on the OEM front bumper.
6. Let the adhesive cure at room temperature. Plug the main harness into each sensor and OEM fog light (if applicable). Reattach winch power cable and controller wire (if applicable). Plug main harness back to the truck. Check if each sensor and OEM light functions normally. Secure loose wiring (main harness and block heater cord) with zip ties.

Important: Check mounting points' hardware after the first 5000 km and every 3-6 months. Re-torque if necessary.