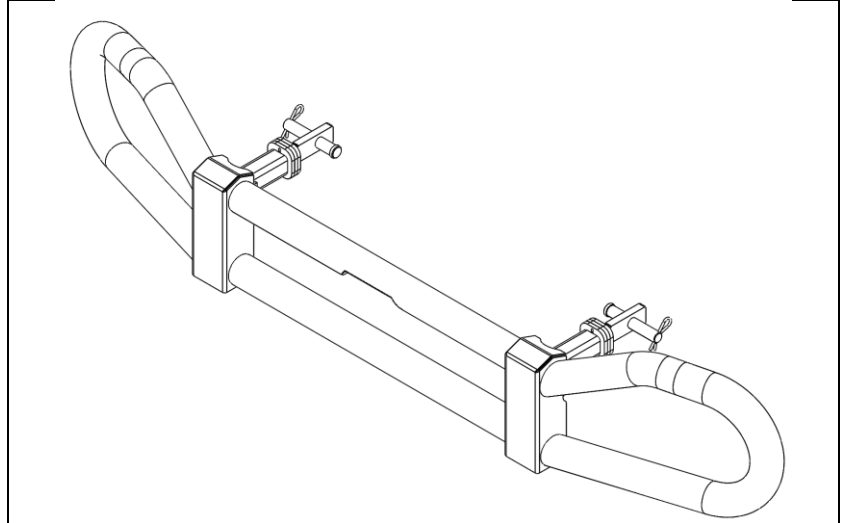


Thank you for choosing HERD!

For assistance call
1-888-543-4373
www.HERD.com

SKU #	Truck Model	
PK22BG	PB11	Peterbilt 567 SBA (2008 – CURRENT)
	PB21	Peterbilt 579 SBA (2012 – CURRENT)
	KW03	Kenworth T800 – SBA (1986 – CURRENT)
	KW12	Kenworth T660 – SBA (2007 – 2016)
	KW21	Kenworth T680 – SBA (2012 – CURRENT)
	KW22	Kenworth T880 – SBA (2014 – CURRENT)



Important

- HERD Guards are vehicle "Make & Model" specific. Use of a bumper on a vehicle other than the model it was designed for will constitute improper use of the product and may void warranty.
- Unless otherwise specified, Grade 8 or Class 10.9 hardware is to be used. For the purposes of these instructions, OE hardware means the truck's original factory hardware.
- For further detail of warranty coverage and warranty repair information visit www.HERD.com.

General Safety

- Take time to fully read the instructions before installing the HERD Guard.
- At all times exercise safe work shop practices, wear steel toe boots and safety glasses during installation.
- Parts and components of the HERD Guard can be heavy, handle with care to avoid injuries.
- Respect power tools and use them as advertised.

HERD North America Inc.
2168 Springfield Road
Box 28, Group 525, RR5
Winnipeg, MB. Canada R2C 2Z2

Parts and tools referenced in this instruction

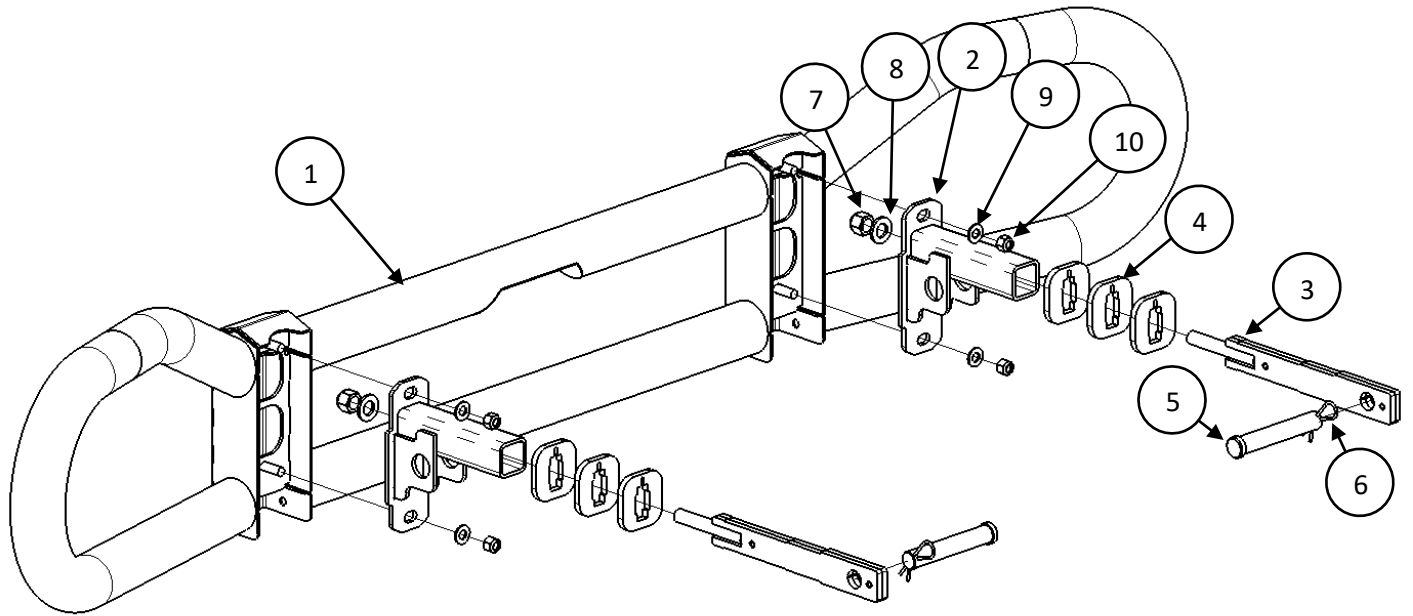


Figure A – PK22BG Bill of Materials

Table 1 - Parts and hardware included

Item No	Part No	Description	Qty
1	3P4007	WLDMT – PK22BG	1
2	1K6001	WLDMT - TOW RECEIVER MOUNT	2
3	1K6005	WLDMT-TOW RECEIVER INSERT	2
4	1P0006	PL – SUBMOUNT / SPACER	12*
5	500257	PIN-HAIRPIN 9/64X3-3/8	2
6	500258	PIN-CLEVIS 1X6 YZP	2
7	500173	NUT-NYLOCK 3/4-16 NF GR8 YZP	2
8	500211	WASHER-FLAT 3/4 SAE GR8 YZP	2
9	500206	WASHER-FLAT 1/2 SAE GR8 YZP	4
10	500167	NUT-NYLOCK 1/2-13 NC GR8 YZP	4

* - The quantity of item 4 (part number 1P0006) varies depending on each truck for installation. Please see Table 2.

Table 2 – Quantity of spacer (item 4 in Figure A) used during installation

Truck	Qty used during installation	Position of the spacer
PB11 (Peterbilt 567 – SBA)	4 (i.e., 2 on each side)	In front of the cross member
PB21 (Peterbilt 579 – SBA)	6 (i.e., 3 on each side)	In front of the cross member
KW03 (Kenworth T800 – SBA)	8 (i.e., 4 on each side)	Behind the cross member
KW12 (Kenworth T660 – SBA)	8 (i.e., 4 on each side)	In front of the cross member
KW21 (Kenworth T680 – SBA)	6 (i.e., 3 on each side)	In front of the cross member
KW22 (Kenworth T880 – SBA)	10 (i.e., 5 on each side)	Behind the cross member

Installation Procedure

1. Insert tow receiver insert (Item 3) into the tow receiver hole on the truck. Secure using clevis pin (Item 6) and hairpin (Item 5). Here the spacer plate (item 4) is installed directly onto the front of the cross member. Based on the truck model, refer to Table 2 for the number of spacer to be used on each driver and passenger sides.

If the access hole in the factory bumper is too small for the spacer to fit, then slide spacer plate in behind the bumper before inserting the tow mount (item 3).

For Peterbilt 567, 579, Kenworth T680 and T660, the spacer plate is installed in front the cross member. For other truck models, the spacer is installed behind the cross member, see Table 2.

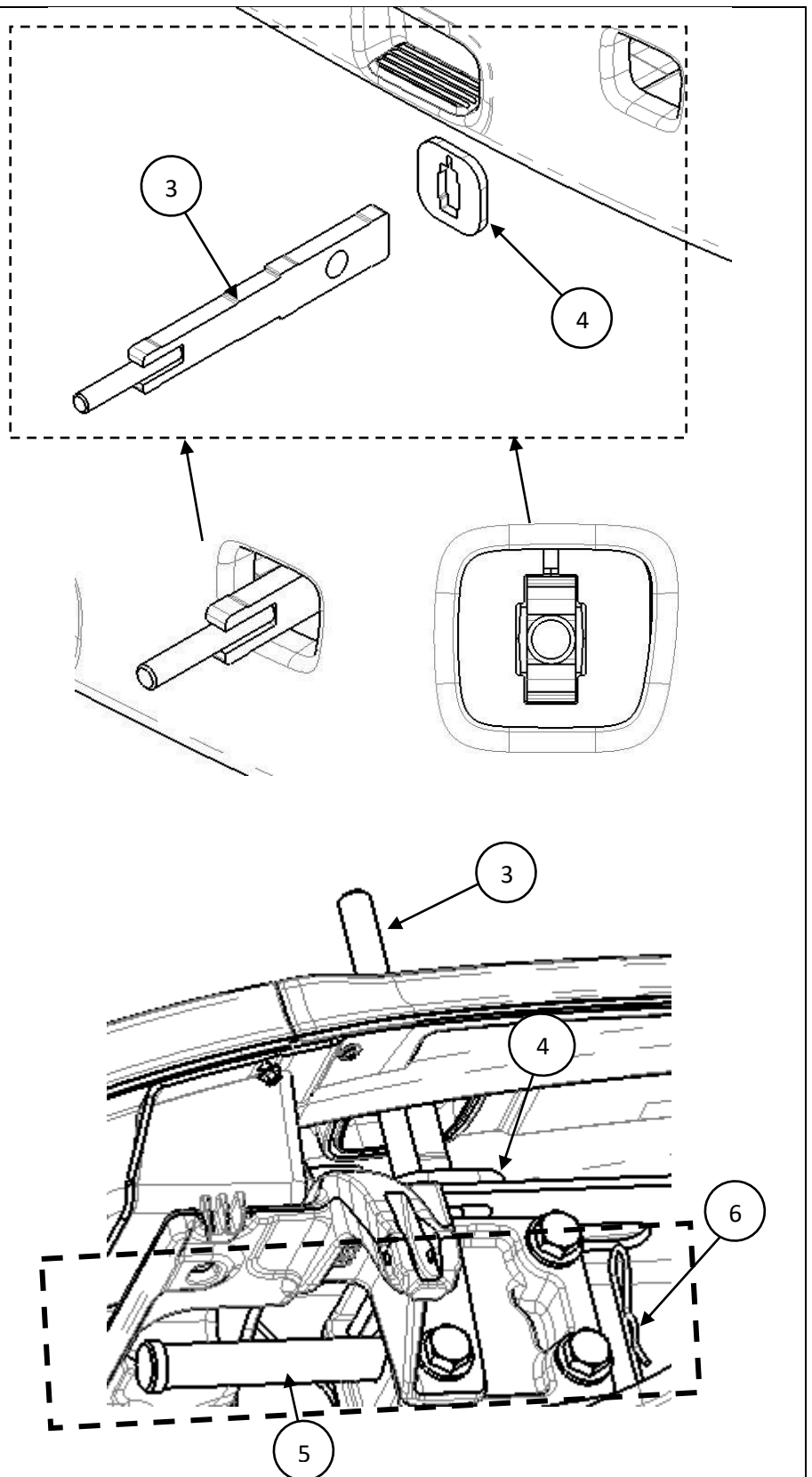


Figure 1 – Tow mount installation (Top view inside driver's side fender, hood not shown).

Installation Procedure

2. For Peterbilt 579 and Kenworth T680:

It is important to note that tow receiver mounts (Item 2) are installed pointed down, as shown, for these truck models.

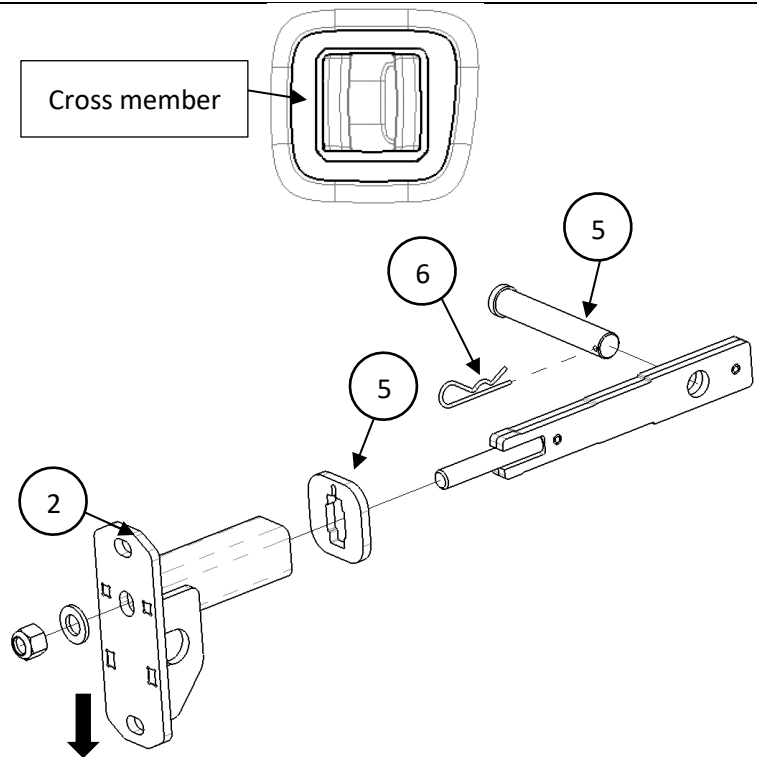


Figure 2 – Mounting assembly for Peterbilt 579 and Kenworth T660 & T680 OEM bumper receiver holes with cross member A (driver side shown).

3. For Peterbilt 567, Kenworth T660, T800 and T880:

It is important to note that that tow receiver mounts (Item 2) are installed pointed up, as shown, for these truck models.

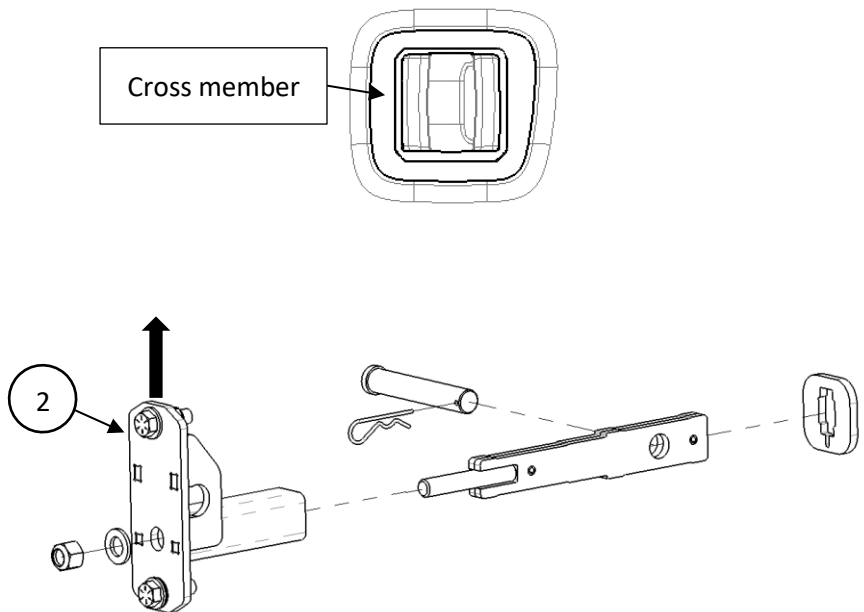


Figure 3 – Mounting assembly for Peterbilt 567 and Kenworth T800 & T880 OEM bumper receiver holes with cross member A (driver side shown).

Installation Procedure

4. Using a straight-edge, align the left and right mounts to be in line with each other. **Torque the $\frac{3}{4}$ " lock nut to 240 ft-lb.** If a torque wrench is not available, turn the $\frac{3}{4}$ " nut $\frac{3}{4}$ of a turn after the nut is seated against the washers.

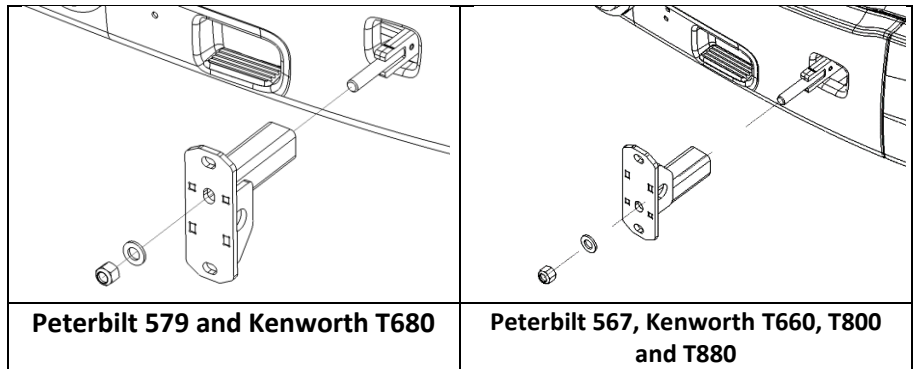


Figure 4 – Mounting assembly for OEM bumper receiver holes (driver side shown).

5. Fasten HERD guard (Item 1) onto tow receiver mounts (Item 2) using provided hardware (Items 9 and 10), as shown.

Ensure that the bumper is centered, using the provided slotting on the tow receiver mounts for adjustment.

Once centered, tighten the bolts to 80 ft.lbs (108 N.m)

6. Open truck hood to ensure there is no interference with the hood and top of bumper guard.

Note:

If bumper guard adjustment is required, loosen $\frac{1}{2}$ " bolts (item 10), readjust bumper guard and torque hardware to 80 ft•lbs (108 N•m).

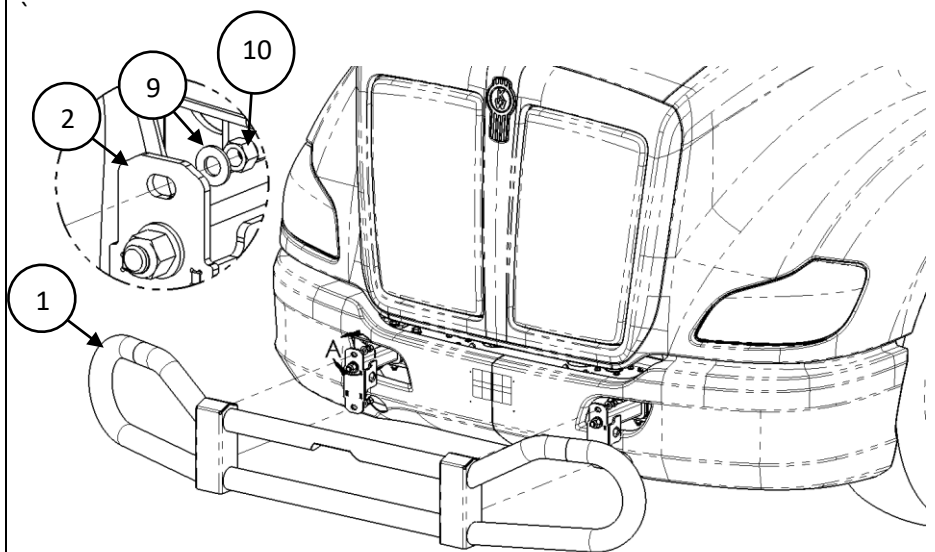


Figure 5 – Sub-mount assembly installation.

Important

- Check mounting points after the first 5000 km and every 3-6 months.