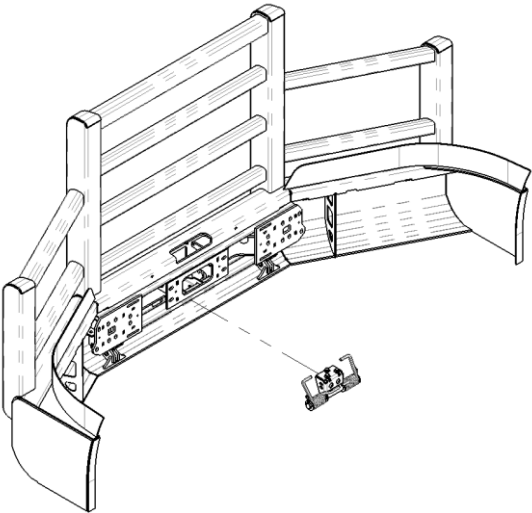


Thank you for choosing HERD!

For assistance call  
1-888-543-4373  
[www.HERD.com](http://www.HERD.com)

Product	Series
<b>Lift Assist</b> Part No: 1MPA014 1MPA016 1MPA018 1MPA020	<b>AeroPLUS!</b>
	

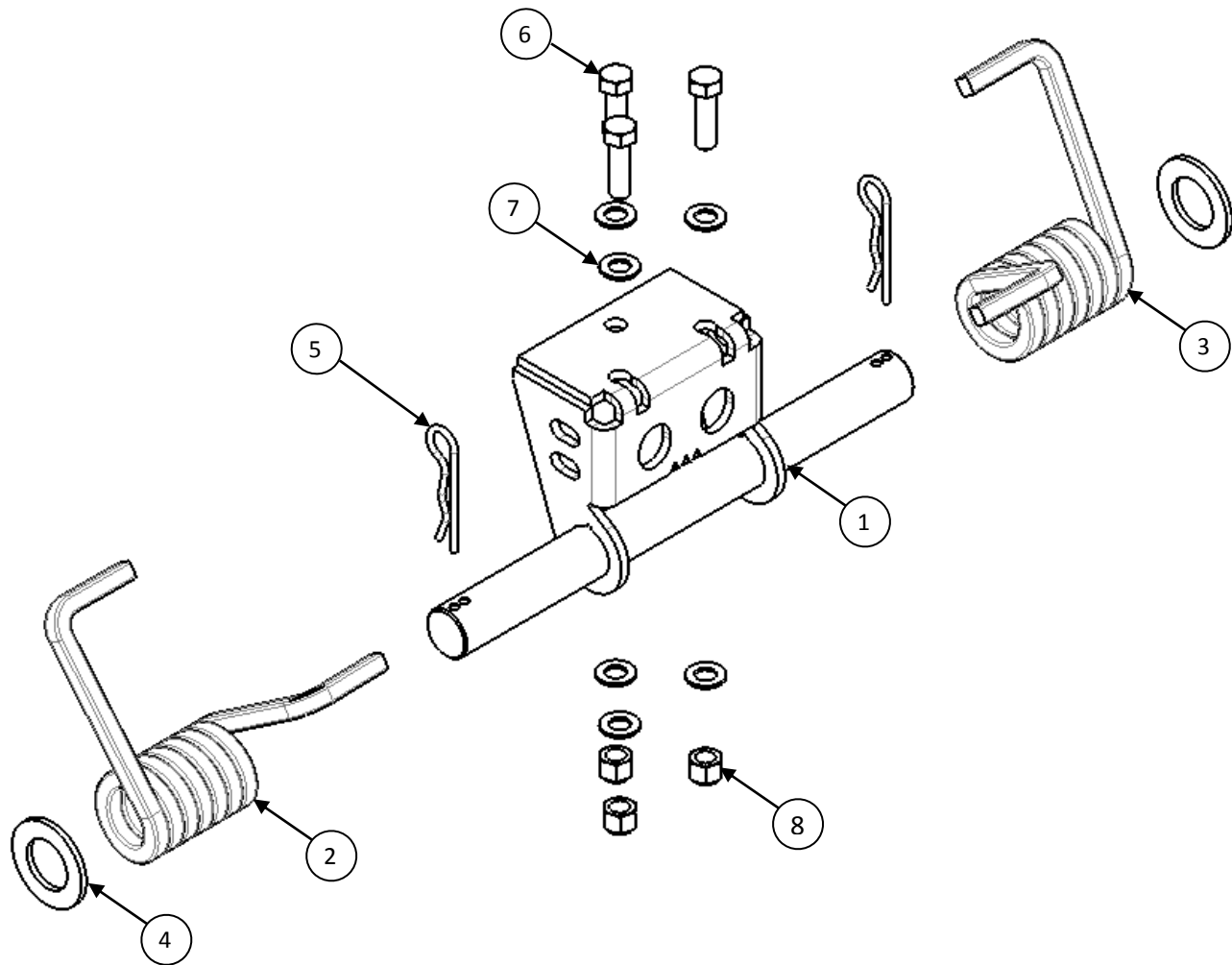
### Important

- Herd Bumpers are vehicle "Make & Model" specific. Use of a bumper on a vehicle other than the model it was designed for will constitute improper use of the product and may void warranty.
- Unless otherwise specified, Grade 8 or Class 10.9 hardware is to be used. For the purposes of these instructions, OE hardware means the truck's original factory hardware.
- For further detail of warranty coverage and warranty repair information visit [www.HERD.com](http://www.HERD.com).

### General Safety

- Take time to fully read the instructions before installing the Lift Assist mechanism.
- At all times exercise safe work shop practices, wear steel toe boots and safety glasses during installation.
- Parts and components of the Herd bumper can be heavy, handle with care to avoid injuries.
- Respect power tools and use them as advertized.

## Parts and tools referenced in this instruction



### Parts and hardware included

Item No	Part No	Description	Qty
1	1MPA015, 1MPA017, 1MPA019, 1MPA021*	Lift Assist subassembly	1
2	1-MC-TS-2-RH	270 Right handed torsion spring	1
3	1-MC-TS-2-LH	270 Left handed torsion spring	1
4	1HN018	Washer	2
5	HP0.125X2.5	1/8" X 2-1/2" hair pin	2
6	HB0.375-16X1.25FTGR8	3/8"-16 X 1" Hex bolt, fully threaded, grade 8	3
7	FW0.375GR8	Flat washer 3/8 GR8 YZP	6
8	NLN0.375-16GR8	Nylon lock nut 3/8-16 GR8 YZP	3

\* Installation guide applies to all the part numbers listed

### Tools Required

Tool	Specification
Ratchet	-
Torque wrench	-
Socket	9/16" or 14 mm
Wrench	9/16" or 14 mm

## Installation Procedure

1. Open bumper and attach Lift Assist subassembly (Item 1) to mounting bracket as shown. Do not fully tighten bolts and nuts. Allow for assembly to move forward and back.

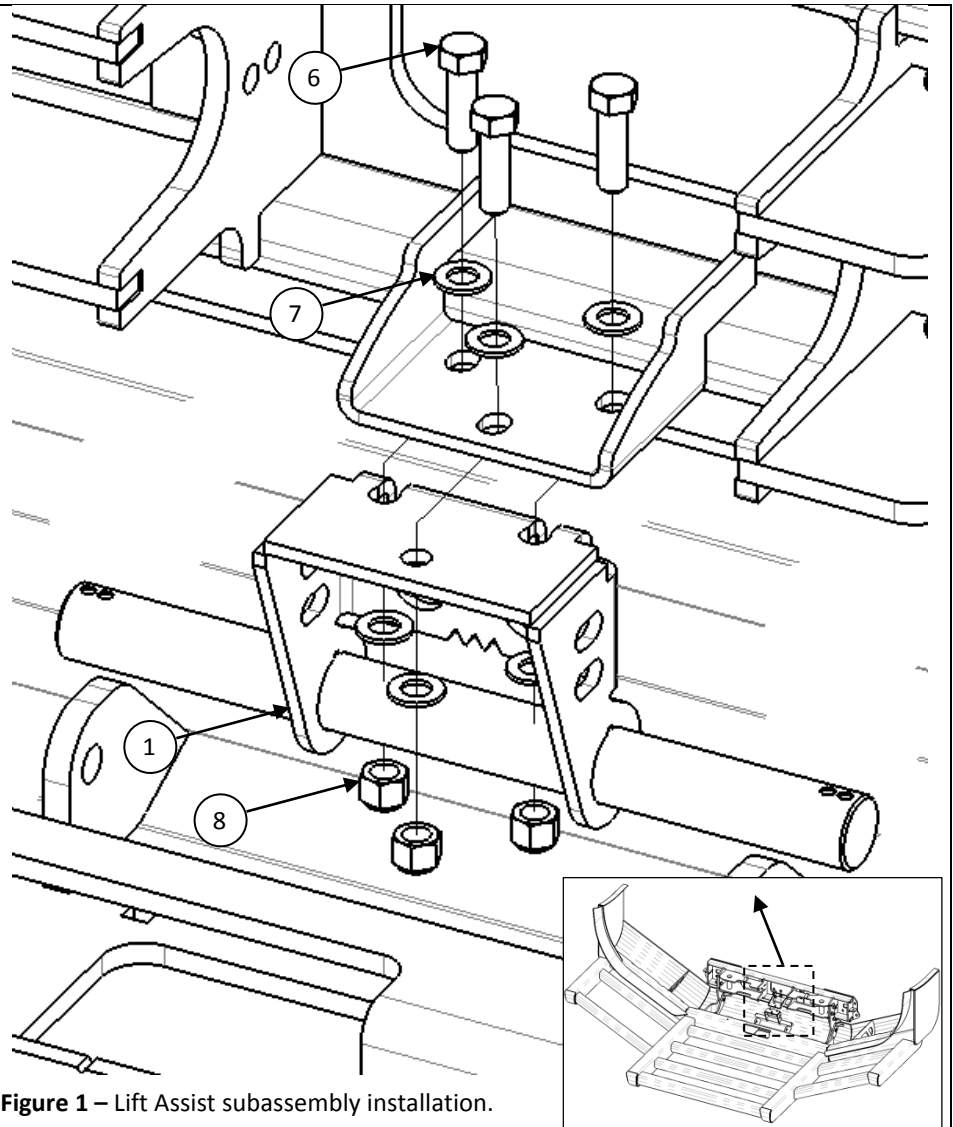


Figure 1 – Lift Assist subassembly installation.

2. Close bumper and from the bottom, feed torsion springs onto Lift Assist shaft ensuring that spring arms are fed through the retaining slots as shown. Install right-handed torsion spring (Item 2) on driver side and left-handed torsion spring (Item 3) on passenger side.

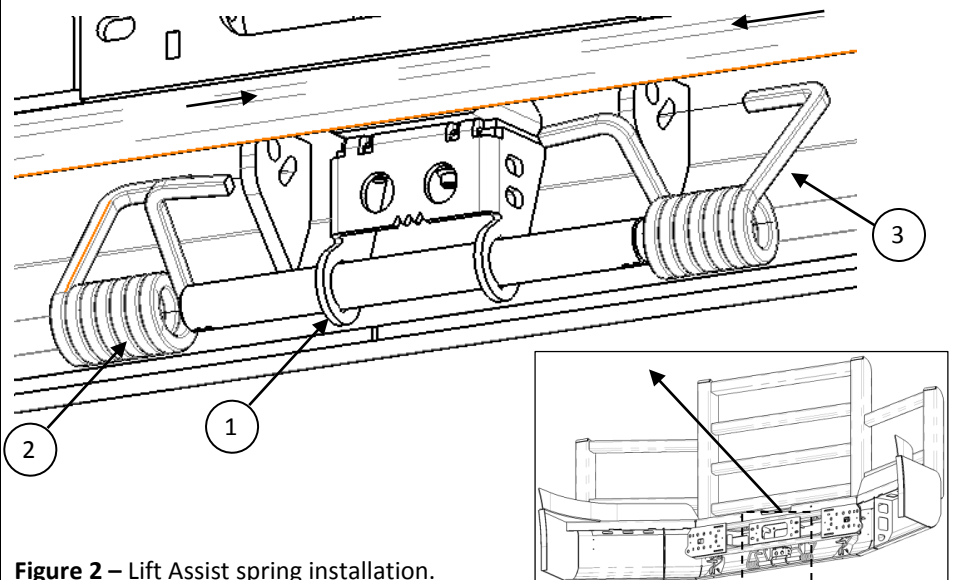
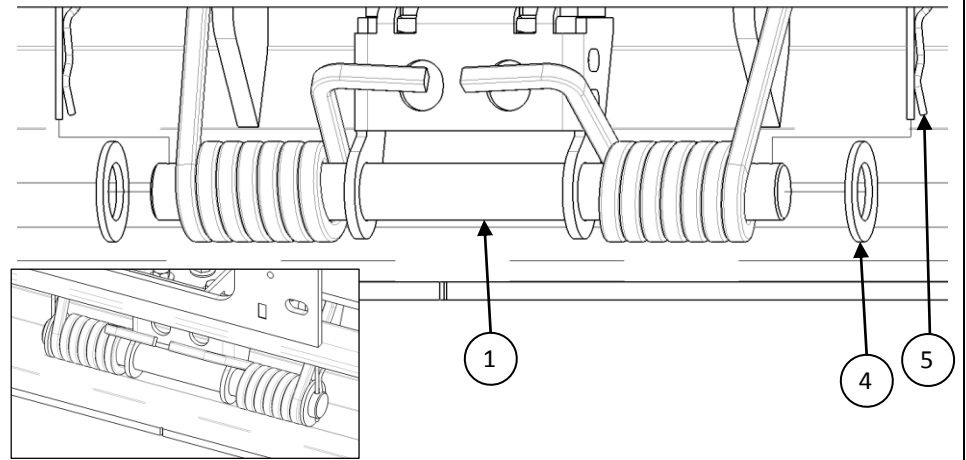


Figure 2 – Lift Assist spring installation.

## Installation Procedure

3. Install washers (Item 4) on either side of Lift Assist shaft. Secure in place by inserting hair pins (Item 5) into outer holes of Lift Assist shaft.



**Figure 3** – Lift Assist washer and pin installation with assembled view insert.

4. Open the bumper and tighten the bolts from step 1 to 45 ft-lb of torque. Close the bumper to ensure Lift Assist mechanism works as intended.