



INSTALLATION INSTRUCTIONS

FREIGHTLINER

| Item # | Vehicle Description |
|--------|--|
| FL07 | FL07 Freightliner Classic & FLD120 SD SFA (Top Mount Tow Hooks) (2004-2007) |

IMPORTANT

- A** Herd Bullbars are vehicle "Make & Model" specific. Use of a bullbar on a vehicle other than the model it was designed for will constitute improper use of the product and may void warranty.
- B** Unless otherwise specified, Grade 8 hardware is to be used. For the purposes of these instructions, OE hardware means the truck's original factory hardware.
- C** The drop-forged eyebolts are an integral part of the strength of Herd bullbars. When tightened firmly, they will minimize vibration and provide superior impact resistance.
- D** To help maintain the factory finish, avoid acid wash.

Step

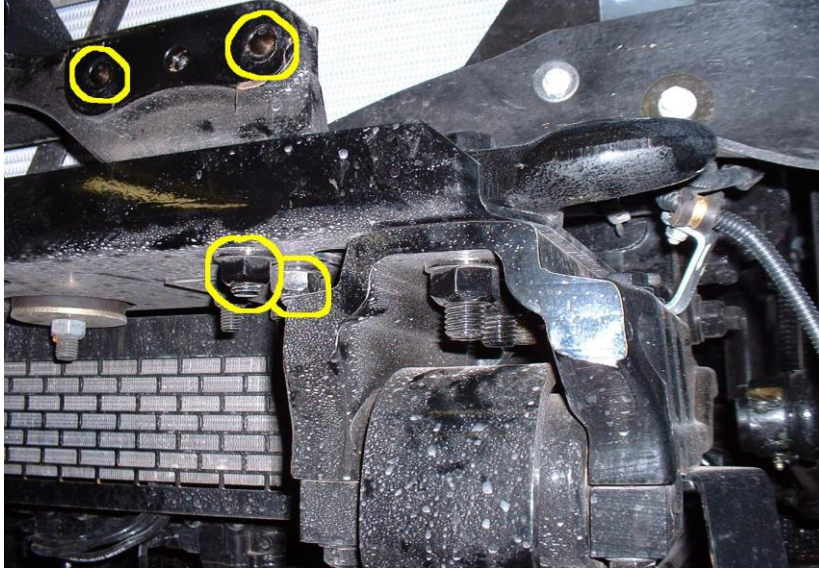
- 1 *Remove factory bumper.*



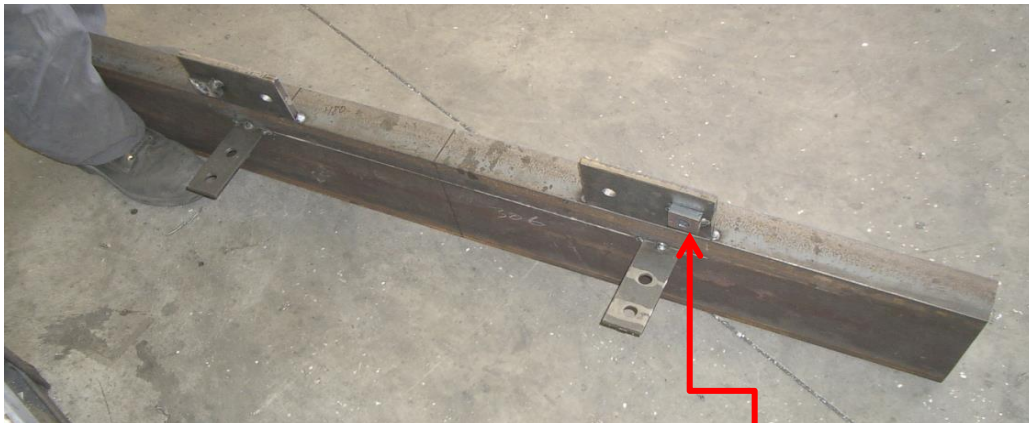
6 BOLTS ARE REQUIRED TO BE REMOVED , 4 ALONG THE TOP AND 2 OF THE BOTTOM. IF THERE ARE DRIVING LIGHTS THEY SHOULD BE ALSO DISCONNECTED BEFORE THE BUMPER IS REMOVED

- 2 *Remove the two inner bolts on each of the tow hooks, they will not be reused. The Herd bar bracket is located so the two horizontal mounting brackets are located under the truck cross brace and the mounting holes line up with the holes for the inner tow hook bolts (see picture below).*

- 3 **Install Herd steel packers between the front hood hinge bracket and cross member, then place the supplied bolts for the inner tow hooks into place on both sides.**



- 4 **Install Herd steel bracket to truck using OE hardware and Herd supplied hardware.**



PLACEMENT OF BOTTOM BRACKET



PACKERS

- 5 **Verify that all mounting locations are used!!**

6 *Attach bullbar to bracket using Herd supplied hinge bolts*

** For DFLT & Defender models only: To install the hinge bolts, the bumper must be in the open (down) position to allow the bottom lip to go under and around the steel hinge.*

7 *Check to ensure bar is level relative to a significant feature of the truck, and readjust if necessary*

8 *Wire driving lights to existing wiring (if applicable)*

9 *Insert tow pin and tighten eyebolts (75-100 ft-lbs), or on the Quick Release mounting system, the drivers side eye bolt 1/4 turn clockwise and the passenger side eye bolt 1/4 turn counter clockwise*



9 *Re-check the mounting bracket and bolts after the first 5,000km and every 3-6 months.*

Eyebolts are secured in the channel with a 7/8" rubber washer. If you need to re-install the approximately halfway onto the threaded part of the eyebolt.