



INSTALLATION INSTRUCTIONS

FREIGHTLINER

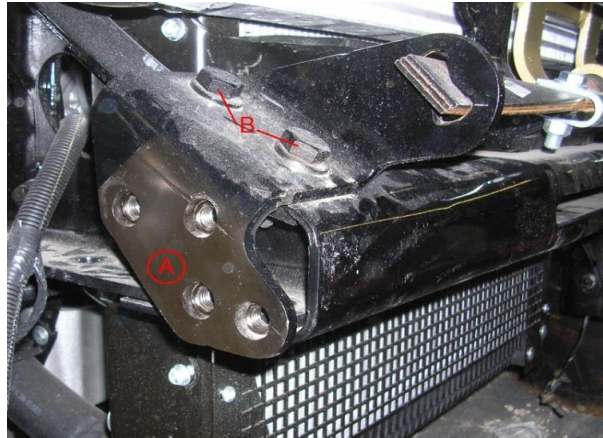
Item #	Vehicle Description
FL21	FL21 Freightliner Century SBA (2004-2007)

IMPORTANT

- A** Herd Bullbars are vehicle "Make & Model" specific. Use of a bullbar on a vehicle other than the model it was designed for will constitute improper use of the product and may void warranty.
- B** Unless otherwise specified, Grade 8 hardware is to be used. For the purposes of these instructions, OE hardware means the truck's original factory hardware.
- C** The drop-forged eyebolts are an integral part of the strength of Herd bullbars. When tightened firmly, they will minimize vibration and provide superior impact resistance.
- D** To help maintain the factory finish, avoid acid wash.

Step

- 1 Remove factory bumper
 - 2 Remove tow hooks
 - 3 Take outside to outside measurement on bracket
(From face A to same face on other side)
 - 4 If adjustment is required, loosen bolts marked B, and adjust width accordingly. (<1084mm)
 - 5 Install lower bolt on each side plate, don't tighten
 - 6 Install 8 5/8" bolts (loosely), pull bracket away from truck, tighten front 5/8" bolt on either side and check to see if bracket is level (plumb)
 - 7 If not level, loosen 5/8" bolts and install shims (plate if required) between bracket and frame, largest shim thickness going at the back ***
 - 8 Repeat steps 6-7 until level is found on both sides
Shims may be unequal on each side. Shim distance will decrease (possibly to 0mm) towards the front
 - 10 When bracket is level, tighten all bolts and install bumper onto bracket using Herd supplied hardware
- * For DFLT & Defender models only: To install the hinge bolts, the bumper must be in the open (down) position to allow the bottom lip to go under and around the steel hinge.
- 11 Ensure bumper lines up with hood lines - bracket (or hood) may require slight adjustment at this point
 - 12 Wire driving lights or signal lights (if applicable)
 - 13 Tighten eyebolts (at least 100 ft-lbs)
 - 14 Re-check the mounting bracket and bolts after the first 5,000km and every 3-6 months



*** If bracket is tilted forwards approx 1/4" over the vertical distance of the bracket (9"), shim plate should be used
These plates are included in the shim kit.

Eyebolts are secured in the channel with a 7/8" rubber washer. If you need to re-install the washer, insert the eyebolt into the hole, and thread a washer onto the back side of the eyebolt, approximately halfway onto the threaded part of the eyebolt.