



# INSTALLATION INSTRUCTIONS

## FREIGHTLINER

**Item #**

FL36

**Vehicle Description**

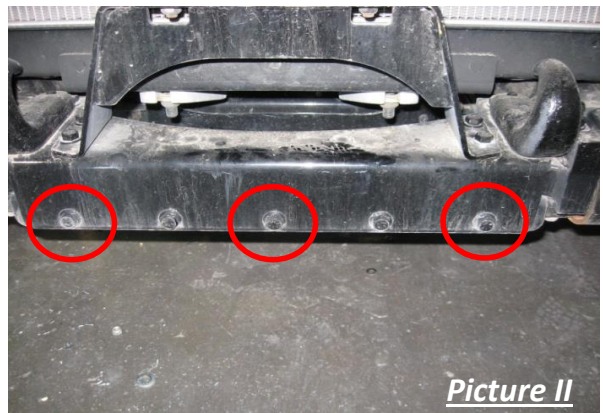
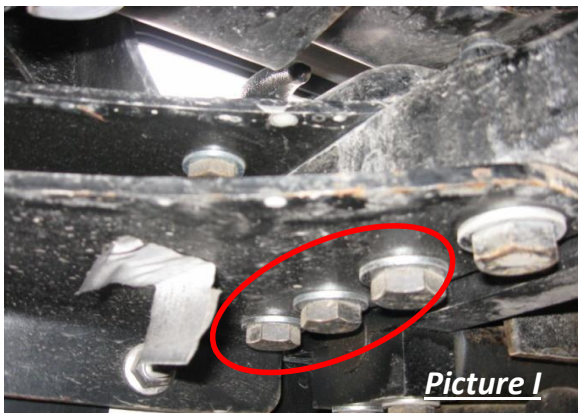
FL36 Freightliner Classic XL & FLD120 SFA (2008-2009)

### **IMPORTANT**

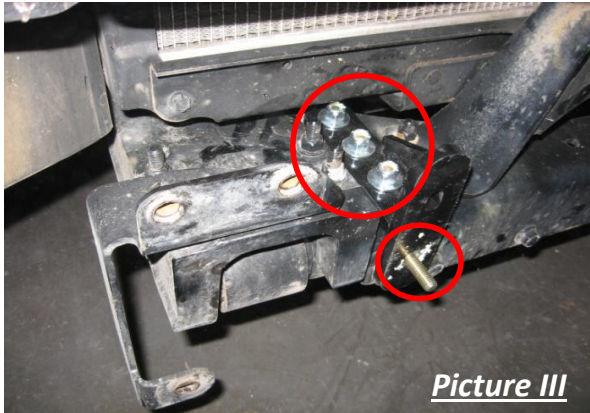
- A** Herd Bullbars are vehicle "Make & Model" specific. Use of a bullbar on a vehicle other than the model it was designed for will constitute improper use of the product and may void warranty.
- B** Unless otherwise specified, Grade 8 hardware is to be used. For the purposes of these instructions, OE hardware means the truck's original factory hardware.
- C** The drop-forged eyebolts are an integral part of the strength of Herd bullbars. When tightened **firmly**, they will minimize vibration and provide superior impact resistance.
- D** To help maintain the factory finish, avoid acid wash.

### Step

- 1 *Remove factory bumper, leaving brackets on truck. Remove factory driving lights (if applicable)*
- 2 *Remove tow hooks by removing three (3) bolts each. (Picture I)*
- 3 *Remove the three (3) bolts from front of truck. (Picture II)*



- 4 **Place Herd Supplied bolts ( $\frac{1}{2}$ " x 2") through holes in Herd loose brackets, then install in place of tow hooks using Herd supplied bolts ( $\frac{1}{2}$ " x 4") (Picture III)**



- 5 **Mount Herd bracket to truck, with packers (3) for spacing on the bottom bolts, using Herd supplied bolts ( $\frac{1}{2}$ " x 3 $\frac{1}{2}$ " and  $\frac{1}{2}$ " x 2")**



- 6 **Verify that all mounting locations are used.**
- 7 **Attach the Aluminum Bullbar to the Herd steel bracket using Herd supplied hardware ( $\frac{3}{4}$ " dia).**  
**Note: \* For DFLT & Defender models only: To install the hinge bolts, the bumper must be in the open (down) position to allow the bottom lip to go under and around the steel hinge.**
- 8 **Check to ensure bar is level relative to a significant feature of the truck, and readjust if necessary**
- 9 **Wire driving lights to existing wiring (if applicable)**
- 10 **Insert towpin and tighten eyebolts (75-100 ft-lbs)**
- 11 **Re-check the mounting bracket and bolts after the first 5,000km and every 3-6 months. Eyebolts are secured in the channel with a  $\frac{7}{8}$ " rubber washer. If you need to re-install the washer, insert the eyebolt into the hole, and thread a washer onto the back side of the eyebolt, approximately halfway onto the threaded part of the eyebolt.**