



INSTALLATION INSTRUCTIONS

FREIGHTLINER

Item

FL37

Vehicle Description

FL37 Freightliner Coronado SD & FL122 SFA (with CenterTow Pin) (2010-2014)

IMPORTANT

A

Herd Bullbars are vehicle "Make & Model" specific. Use of a bullbar on a vehicle other than the model it was designed for will constitute improper use of the product and may void warranty.

B

Unless otherwise specified, Grade 8 hardware is to be used. For the purposes of these instructions, OE hardware means the truck's original factory hardware.

C

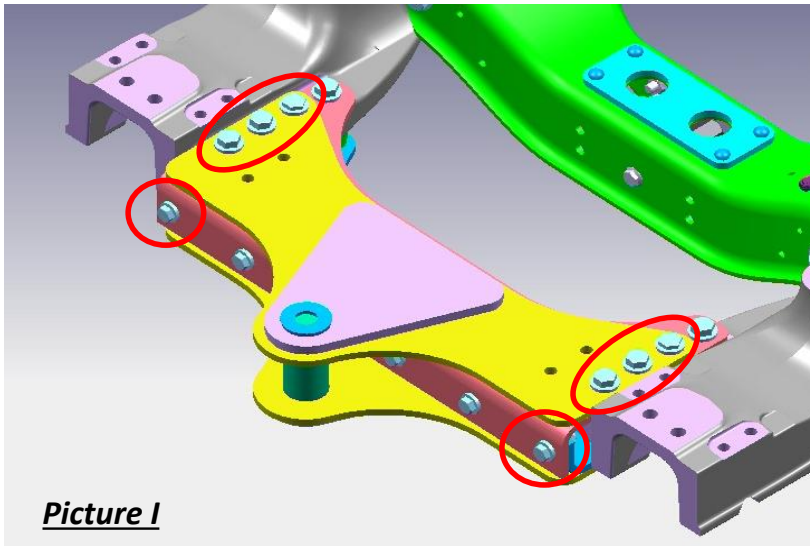
The drop-forged eyebolts are an integral part of the strength of Herd bullbars. When tightened firmly, they will minimize vibration and provide superior impact resistance.

D

To help maintain the factory finish, avoid acid wash.

Step

- 1 *Remove factory bumper and factory driving lights (if applicable).*
- 2 *Remove the six (6) bolts from the top tow pin plate, and the two (2) outside front bolts, as shown below. (Picture 1)*



Picture 1

- 3** *Install Herd loose brackets on top of tow pin plate with the large gusset to the inside, using Herd supplied bolts (5/8" x 6")*
- 4** *Attach the Herd bracket to the loose brackets with Herd supplied bolts (1/2" x 2").*
- 5** *Install the remaining supplied bolts (1/2" x 2 1/2") using OEM washers.*

Verify that all mounting locations are used.

- 6** ** For DFLT & Defender models only: To install the hinge bolts, the bumper must be in the open (down) position to allow the bottom lip to go under and around the steel hinge.*
- 7** *Check to ensure bar is level relative to a significant feature of the truck, and readjust if necessary. Tighten all bolts.*
- 8** *Wire driving lights to existing wiring (if applicable)*
- 9** *Insert towpin and tighten eyebolts (75-100 ft-lbs)*
- 10** *Re-check the mounting bracket and bolts after the first 5,000km and every 3-6 months.*

Eyebolts are secured in the channel with a 7/8" rubber washer. If you need to re-install the washer, insert the eyebolt into the hole, and thread a washer onto the back side of the eyebolt, approximately halfway onto the threaded part of the eyebolt.