



# INSTALLATION INSTRUCTIONS

## FREIGHTLINER

**Item #**

FL43

**Vehicle Description**

FL43 Freightliner Coronado SD & FL122 (With Center Tow Pin) SBA (2013-2015)

### **IMPORTANT**

- A** Herd Bullbars are vehicle "Make & Model" specific. Use of a bullbar on a vehicle other than the model it was designed for will constitute improper use of the product and may void warranty.
- B** Unless otherwise specified, Grade 8 hardware is to be used. For the purposes of these instructions, OE hardware means the truck's original factory hardware.
- C** The drop-forged eyebolts are an integral part of the strength of Herd bullbars. When tightened firmly, they will minimize vibration and provide superior impact resistance.
- D** To help maintain the factory finish, avoid acid wash.

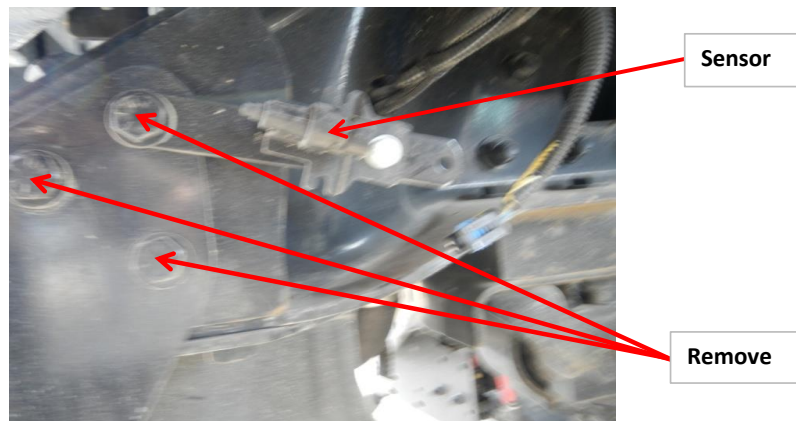
### Step

1 *Remove factory bumper.*

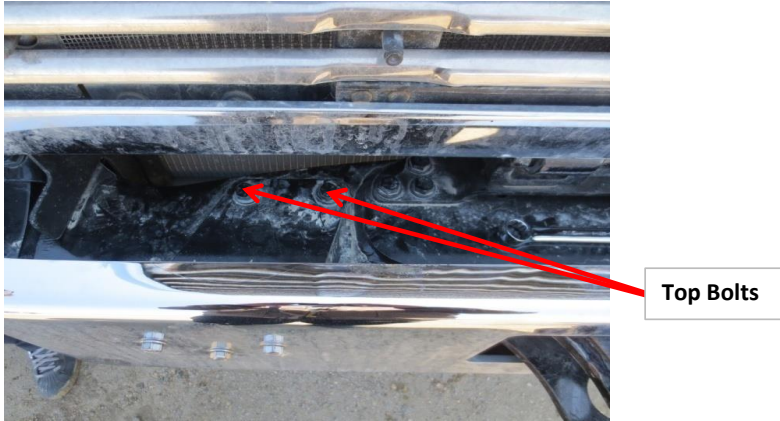
1a *Remove cotter pin at bottom to remove factory towpin.*



1b *Remove factory side bolts, there are 3 on each side. Driver's side shown.*



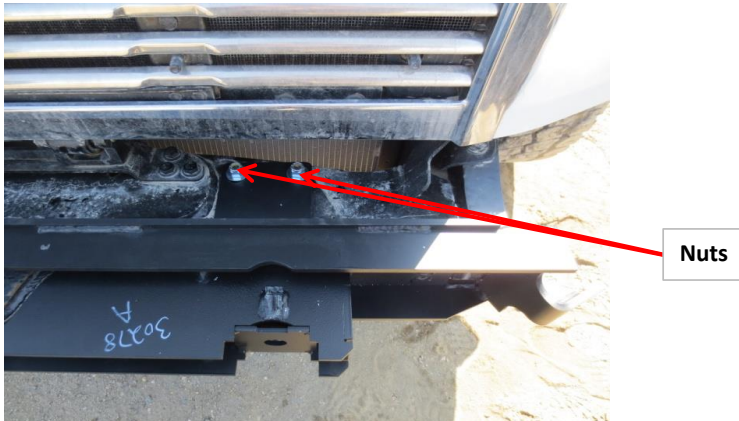
**1c** Remove factory top bolts, there are 2 on each side.



**1d** Slide factory bumper ahead and remove.

**1e** Use one of the factory side bolts to re-mount the sensor.

**2** Install Herd steel brackets to truck using supplied hardware, the bolts must be installed from the bottom. Nyloc nuts on top. Make sure there is a flat washer top and bottom. Do NOT tighten.



**3** Verify that all 4 mounting locations are used

**4** Attach bullbar to bracket using Herd supplied hinge bolts, torque to 100 ft-lb.

*\* For DFLT & Defender models only:* To install the hinge bolts, the bumper must be in the open (down) position to allow the bottom lip to go under and around the steel hinge.

**5** Put bar into upright position and lock (either tighten eyebolts or let Slam Latch equipped keep closed), place tow pin in top hole (turn tow pin so notched section is forward seat the tow pin and rotate so notch is rearward, reverse order for removal) and shift bumper until the HERD holes align with the factory tow pin holes. Tighten the bolts holding the bracket to the truck, make sure the bar is solid, if not tighten bolts more (approximately 110 ft-lb).

**6** Wire driving lights to existing wiring (if applicable)

**8** Re-check the mounting bracket and bolts after the first 5,000km and every 3-6 months.

*Eyebolts are secured in the channel with a 7/8" rubber washer. If you need to re-install the washer, insert the eyebolt into the hole, and thread a washer onto the back side of the eyebolt, approximately halfway onto the threaded part of the eyebolt.*