



INSTALLATION INSTRUCTIONS

INTERNATIONAL

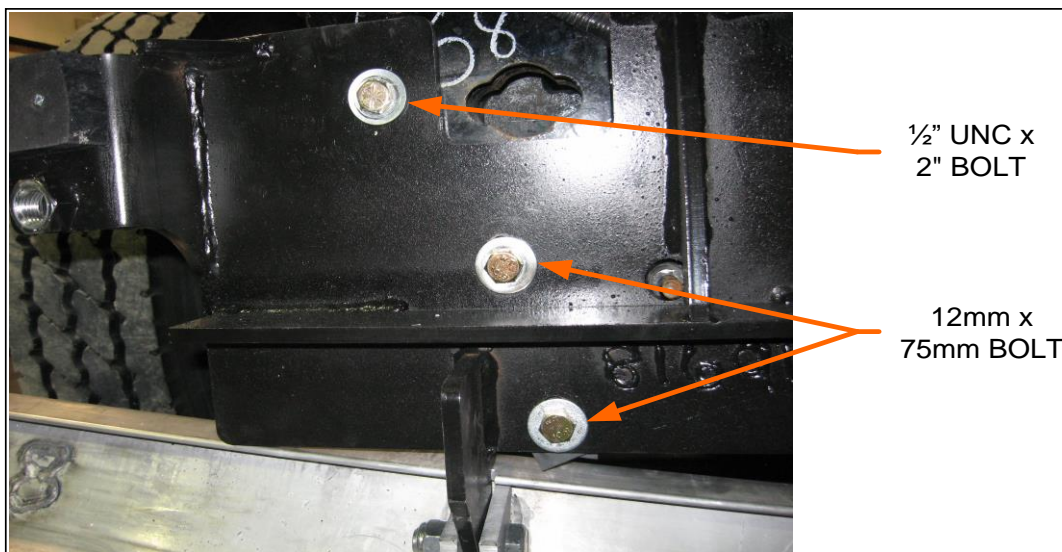
Item #	Vehicle Description
IN18	International - LONESTAR

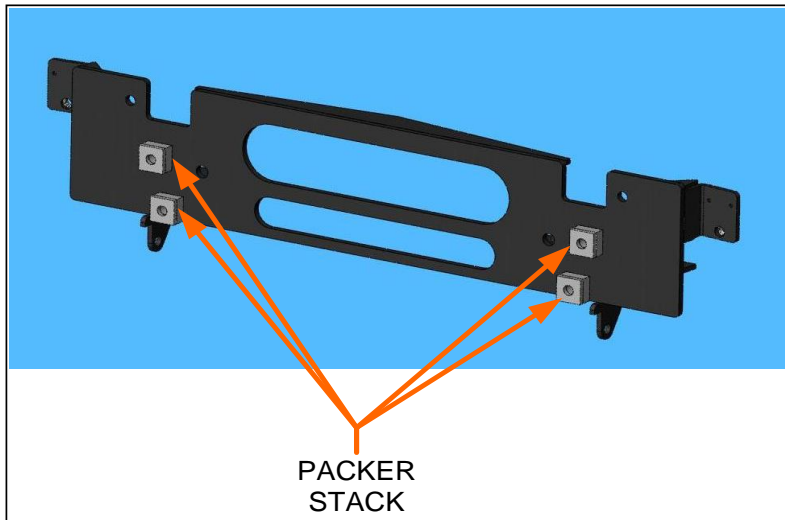
IMPORTANT

- A** Herd Bullbars are vehicle "Make & Model" specific. Use of a bullbar on a vehicle other than the model it was designed for will constitute improper use of the product and may void warranty.
- B** Unless otherwise specified, Grade 8 hardware is to be used. For the purposes of these instructions, OE hardware means the truck's original factory hardware.
- C** The drop-forged eyebolts are an integral part of the strength of Herd bullbars. When tightened firmly, they will minimize vibration and provide superior impact resistance.
- D** To help maintain the factory finish, avoid acid wash.

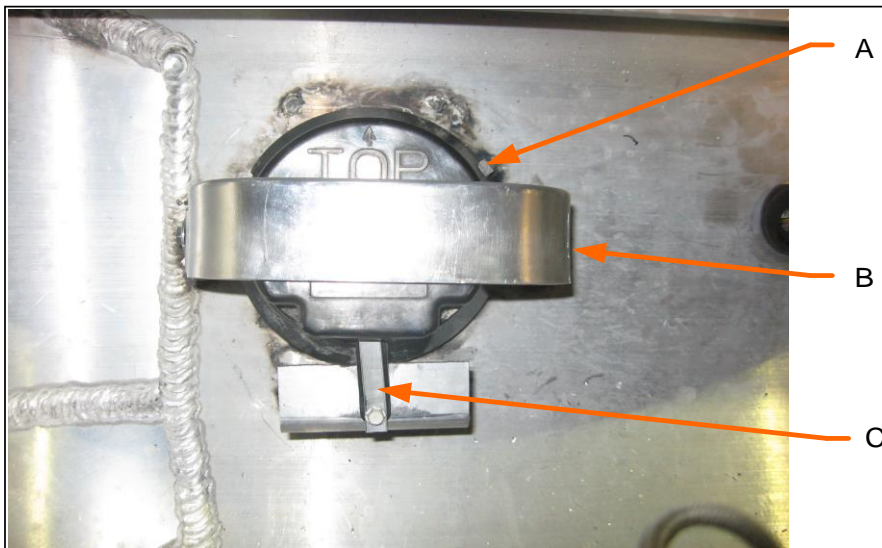
Step

- 1 *Remove factory bumper*
- 2 *Install Herd steel bracket to truck using HERD supplied hardware as shown below*





- 3 **Verify that all mounting locations are used**
- 4 **Attach bullbar to bracket using Herd supplied hinge bolts**
- 5 **Check to ensure bar is level relative to a significant feature of the truck, and readjust if necessary**
- 6 **Driving light installation shown below. Flip part B up, Install light assembly and orient to tab B, Install plastic stiffener C and tighten bolt, flip part B down to middle and push tight against light, then tighten side bolts.**



- 7 **Lift bar and tighten eyebolts (75-100 ft-lbs)**
- 8 **Re-check the mounting bracket and bolts after the first 5,000km and every 3-6 months.**

Eyebolts are secured in the channel with a 7/8" rubber washer. If you need to re-install the washer, insert the eyebolt into the hole, and thread a washer onto the back side of the eyebolt, approximately halfway onto the threaded part of the eyebolt.