



INSTALLATION INSTRUCTIONS

INTERNATIONAL

Item #	Vehicle Description
IN23	International Terrastar (4x4 and Non 4x4 versions)

IMPORTANT

- A** Herd Bullbars are vehicle "Make & Model" specific. Use of a bullbar on a vehicle other than the model it was designed for will constitute improper use of the product and may void warranty.
- B** Unless otherwise specified, Grade 8 hardware is to be used. For the purposes of these instructions, OE hardware means the truck's original factory hardware.
- C** The drop-forged eyebolts are an integral part of the strength of Herd bullbars. When tightened firmly, they will minimize vibration and provide superior impact resistance.
- D** To help maintain the factory finish, avoid acid wash.

Step

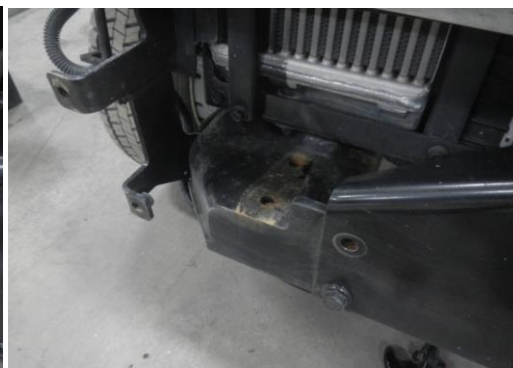
- 1 Remove factory bumper held on by 4 torx head screws as shown.



- 2 Remove factory tow hook and top bolt that attach cross member to frame mounts as shown (both sides).



Remove Factory hardware as shown



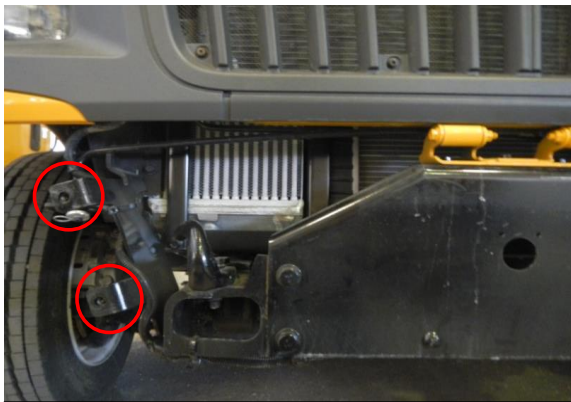
Factory hardware removed

- 3 **Install Herd tow section mount assembly bracket to truck using herd supplied hardware (both sides).**

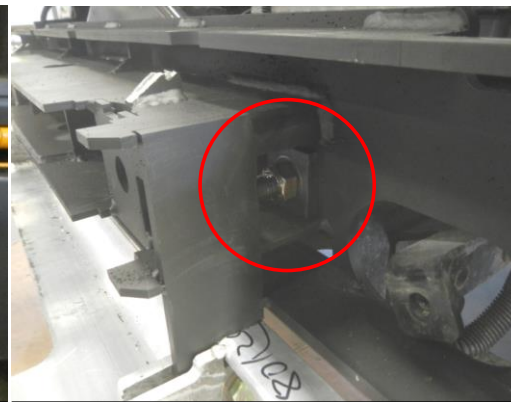


Herd Tow Section mount - installed

- 4 **Install Herd steel bracket to truck using OEM hardware in cross member holes along with Herd supplied square washers and 3/4" nuts for receiver mounts installed above. Ensure that OEM bumper bracket faces pass through openings in Herd bracket.**



OEM Brackets that pass thru



Square washer and 3/4" Nut

- 4 **Verify that all mounting locations are used**
- 5 **Attach bullbar to bracket using Herd supplied hinge bolts**
** For DFLT & Defender models only: To install the hinge bolts, the bumper must be in the open (down) position to allow the bottom lip to go under and around the steel hinge.*
- 7 **Wire driving lights to existing wiring (if applicable)**
- 8 **Insert towpin and tighten eyebolts (75-100 ft-lbs)**
- 9 **Re-check the mounting bracket and bolts after the first 5,000km and every 3-6 months.**

Eyebolts are secured in the channel with a 7/8" rubber washer. If you need to re-install the washer, insert the eyebolt into the hole, and thread a washer onto the back side of the eyebolt, approximately halfway onto the threaded part of the eyebolt.