



SUPPLEMENTAL INSTALLATION INSTRUCTIONS

KENWORTH

Item

KW07 / KW10

Vehicle Description

Kenworth T800/T803 - 2005 Model with outside tow receivers

IMPORTANT

- A** Herd bumpers are vehicle "Make & Model" specific. Use of this product on a vehicle other than the model it was designed for will constitute improper use of the product and may void the warranty.
- B** Unless otherwise specified, Grade 8 hardware is to be used. For the purposes of these instructions, OE hardware means the truck's original factory hardware.
- C** The drop-forged eyebolts are an integral part of the strength of Herd bumpers. When tightened firmly, they will minimize vibration and provide superior impact resistance.
- D** To help maintain the factory finish, avoid acid wash.

Step

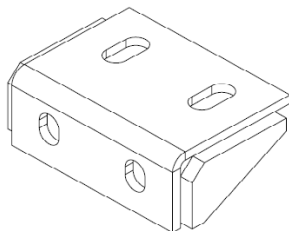
1 *Remove factory bumper*

2 *Depending on the Type of frame that you have you will install the HERD mounting bracket using different mounting holes. For the trucks equipped with tow receivers, please see the last step (12)*

Center Tow pin: Remove center tow pin, remove OEM bumper mounts on the bottom of the cross member



3 *Install the HERD Supplied lower mounts using the OEM Hardware*



Using the OEM bolts attach the HERD mounting bracket to the cross member at the points indicated by the arrows. Bolt the bottom mounts to the mounting bracket. You now have the mounting bracket secured using 6 mounting points.

4



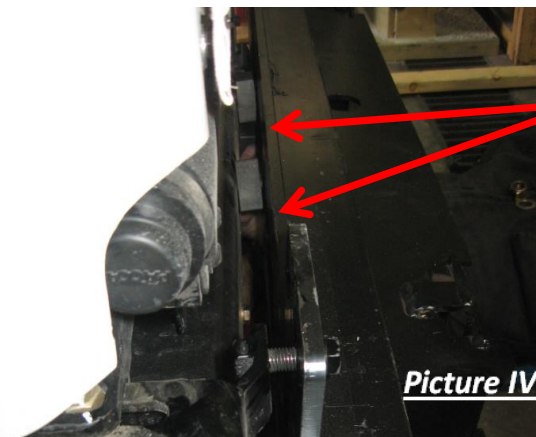
5

Place loose mount (1-MP-KW03.BP) (Picture III) inside the crossmember from one side. Orient the part so that the nuts are at the top and that a bolt from the front of the truck goes through the plate before threading into the nut. Locate the part horizontally and to hold it in place for mounting.



6

Place packers (1-BR-MP-KW03.40) (Picture IV) in between Herd steel bracket and crossmember and mount with supplied (3/4" x 3") bolts from the bracket side, through the packers and crossmember, and into the loose mount.



7

Attach bullbar to bracket using Herd supplied hinge bolts

* For DFLT & Defender models only: To install the hinge bolts, the bumper must be in the open (down) position to allow the bottom lip to go under and around the steel hinge.

8

Check to ensure bar is level relative to a significant feature of the truck, and readjust if necessary

9

Wire driving lights to existing wiring (if applicable)

10

Insert towpin and tighten eyebolts (75-100 ft-lbs)

- 11** *Re-check the mounting bracket and bolts after the first 5,000km and every 3-6 months.
Retain the aluminum OEM spacers and bolts, reuse them to attach the steel bracket*



- 12** *Use the 8 mounting points shown below to attach the HERD steel bracket. The lower mounts shown in step 3, and the loose mount 1-MP-KW03.BP) in step 5 are not required. Follow steps 7 through 11.*

