

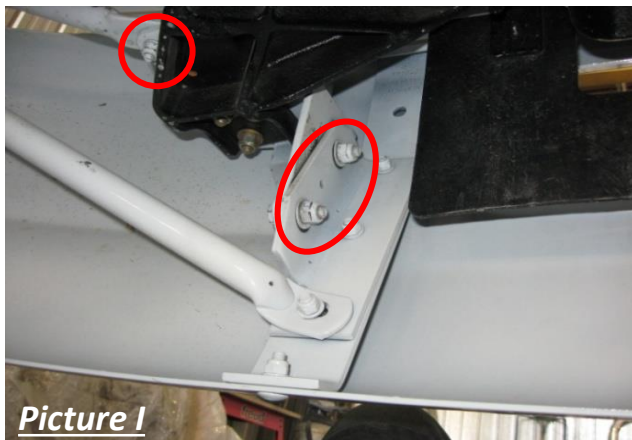
Item #	Vehicle Description
KW17	KW T370, T270 SBA (2011-2016)

## **IMPORTANT**

- A** Herd Bullbars are vehicle "Make & Model" specific. Use of a bullbar on a vehicle other than the model it was designed for will constitute improper use of the product and may void warranty.
- B** Unless otherwise specified, Grade 8 hardware is to be used. For the purposes of these instructions, OE hardware means the truck's original factory hardware.
- C** The drop-forged eyebolts are an integral part of the strength of Herd bullbars. When tightened **firmly**, they will minimize vibration and provide superior impact resistance.
- D** To help maintain the factory finish, avoid acid wash.

### Step

- 1 **Remove factory bumper by removing six (6) bolts from side mounting plates (Picture I). Retain hardware.**



- 2 **Install outer Herd steel sub mounts (Picture II) loosely with factory hardware.**
- 3 **Install inner Herd steel sub mounts (Picture II) into tow receivers and retain with Factory locking pins.**



- 4** *Attach the steel bracket to the sub mounts using supplied hardware. (Picture III)*



- 5** *Verify that bracket is vertical.*
- 6** *If bracket is not square to the vehicle, use supplied shims between the sub mounts and the steel channel as required.*
- 7** *Verify that all mounting locations are used and tighten all bolts used for mounting.*
- 8** *Attach bullbar to bracket using Herd supplied hinge bolts.*  
*\* For DFLT & Defender models only: To install the hinge bolts, the bumper must be in the open (down) position to allow the bottom lip to go under and around the steel hinge.*
- 9** *Check to ensure bar is level relative to a significant feature of the truck, and readjust if necessary*
- 10** *Wire driving lights to existing wiring (if applicable)*
- 11** *Insert and tighten eyebolts (75-100 ft-lbs)*
- 12** *Re-check the mounting bracket and bolts after the first 5,000km and every 3-6 months.*  
*Eyebolts are secured in the channel with a 7/8" rubber washer. If you need to re-install the washer, insert the eyebolt into the hole, and thread a washer onto the back side of the eyebolt, approximately halfway onto the threaded part of the eyebolt.*