

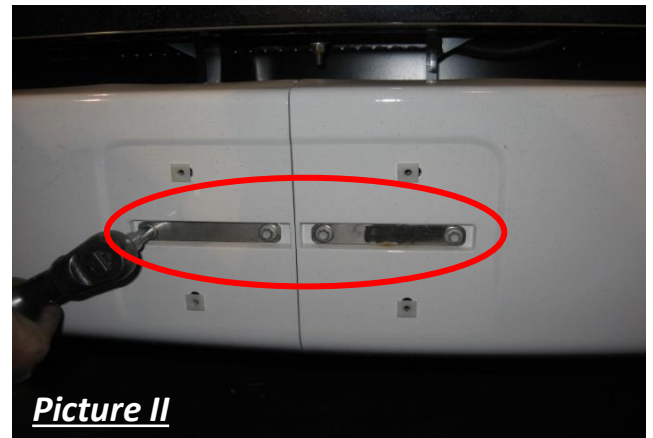
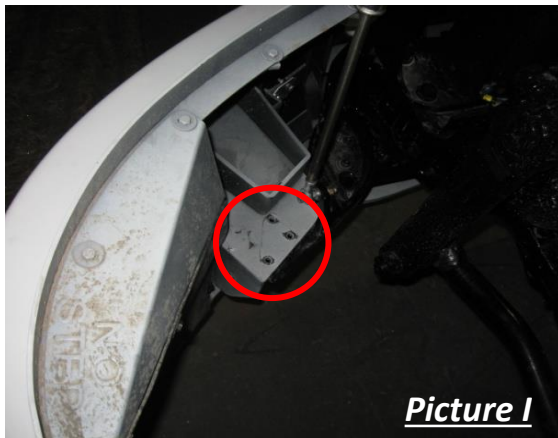
<b>Item #</b>	<b>Vehicle Description</b>
KW18	Kenworth T700 SBA (2011-2014)

## IMPORTANT

- A** Herd Bullbars are vehicle "Make & Model" specific. Use of a bullbar on a vehicle other than the model it was designed for will constitute improper use of the product and may void warranty.
- B** Unless otherwise specified, Grade 8 hardware is to be used. For the purposes of these instructions, OE hardware means the truck's original factory hardware.
- C** The drop-forged eyebolts are an integral part of the strength of Herd bullbars. When tightened firmly, they will minimize vibration and provide superior impact resistance.
- D** To help maintain the factory finish, avoid acid wash.

### Step

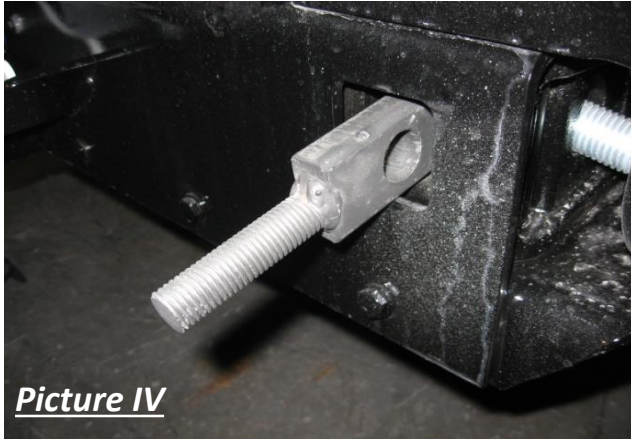
- 1 Remove factory bumper by removing six (6) bolts from side mounting plates (Picture I), and four (4) bolts behind the front license plate (Picture II).



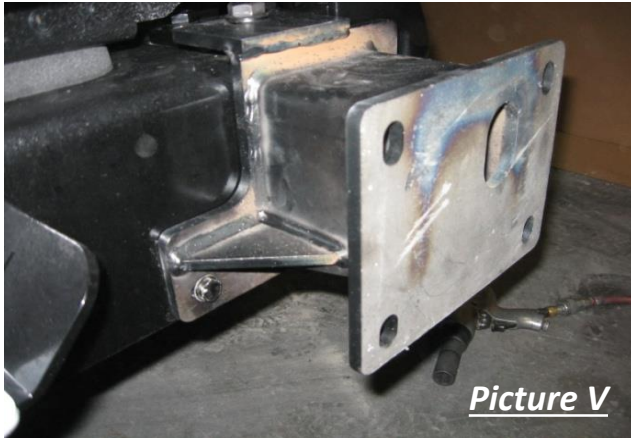
- 2 Remove top outside bolt and the two (2) front outermost bolts on each side of the frame. (Picture III)



- 3** *Install Herd tow receiver bracket into tow receivers (Picture IV) and retain with Factory locking pins.*



- 4** *Install Herd steel sub mounts (Picture V) onto truck frame using OEM hardware.*



- 5** *Tighten 3/4" nut onto the tow receiver brackets to 70-80 ft-lbs. Do not overtighten.*
- 6** *Attach the steel bracket to the sub mounts using supplied hardware.*
- 7** *Verify that bracket is centred on the truck, and adjust if necessary.*
- 8** *Verify that all mounting locations are used and tighten all bolts used for mounting.*
- 9** *Attach bullbar to bracket using Herd supplied hinge bolts.*  
\* For DFLT & Defender models only: To install the hinge bolts, the bumper must be in the open (down) position to allow the bottom lip to go under and around the steel hinge.
- 10** *Check to ensure bar is level relative to the bottom of the hood, and readjust if necessary.*
- 11** *Wire driving lights to existing wiring (if applicable)*
- 12** *Insert and tighten eyebolts (75-100 ft-lbs)*
- 13** *Re-check the mounting bracket and bolts after the first 5,000km and every 3-6 months.*  
*Eyebolts are secured in the channel with a 7/8" rubber washer. If you need to re-install the washer, insert the eyebolt into the hole, and thread a washer onto the back side of the eyebolt, approximately halfway onto the threaded part of the eyebolt.*