

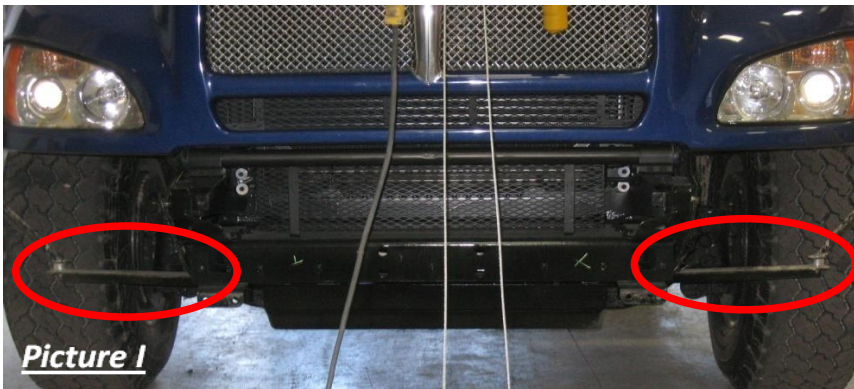
Item #	Vehicle Description
KW20	Kenworth T440 SBA (2011-2014)

IMPORTANT

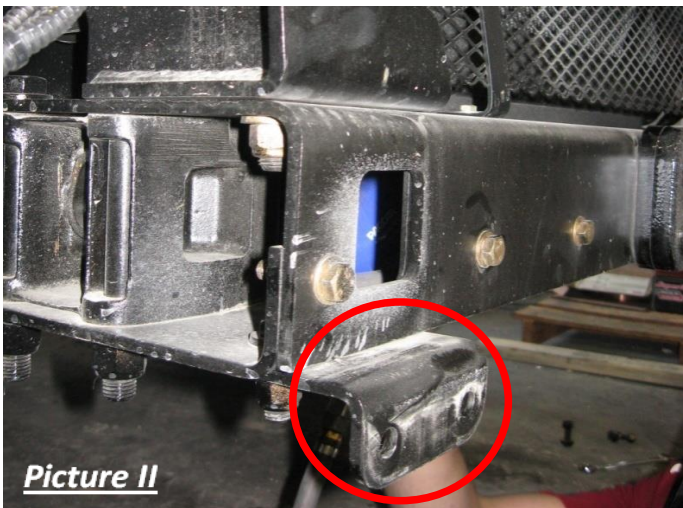
- A** Herd Bullbars are vehicle "Make & Model" specific. Use of a bullbar on a vehicle other than the model it was designed for will constitute improper use of the product and may void warranty.
- B** Unless otherwise specified, Grade 8 hardware is to be used. For the purposes of these instructions, OE hardware means the truck's original factory hardware.
- C** The drop-forged eyebolts are an integral part of the strength of Herd bullbars. When tightened firmly, they will minimize vibration and provide superior impact resistance.
- D** To help maintain the factory finish, avoid acid wash.

Step

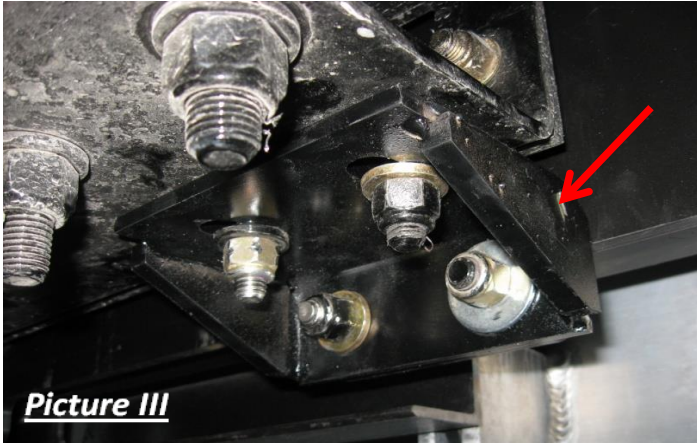
- 1** Remove factory bumper, disconnect factory driving lights if applicable
- 2** Remove factory tow pin
- 3** Remove factory bumper support braces (Picture I)



- 3** Remove lower angle brackets located under front crossmember (Picture II)



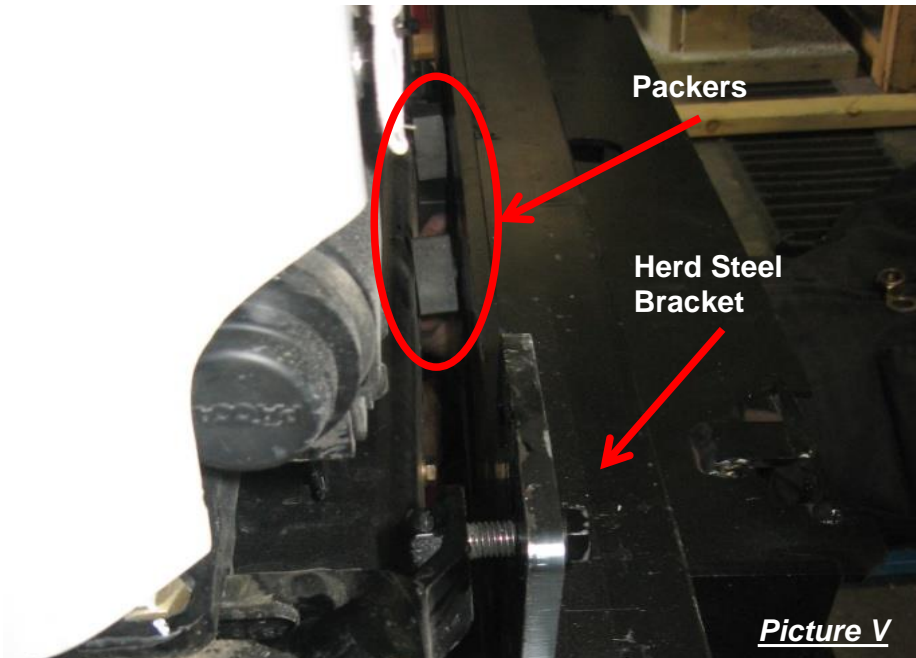
- 4 **Install Herd steel angle bracket to truck using OE hardware** (Picture III)



- 5 **To attach the center bolts into the cross member place 1-MP-KW03.BP** (Picture IV) **inside crossmember from one side. Orient horizontally, with the nuts at the top, and hold in place for mounting. Thread bolts into the supports nuts and tighten, leaving 1-MP-KW03.BP in place within the cross member.**



- 6 **Install Herd steel bracket to truck using OE hardware (do not tighten at this point). Stack up 2 packers at each of the 4 holes in the crossmember, and pass Herd supplied bolts (3/4" x 3") through bracket, packers, holes in crossmember, and finally threaded into nuts from 1-MP-KW03.BP** (Picture V). **Tighten all fasteners.**



- 7 **Attach bullbar to bracket using Herd supplied hinge bolts**

Note: * For DFLT & Defender models only: To install the hinge bolts, the bumper must be in the open (down) position to allow the bottom lip to go under and around the steel hinge.

- 8** *Check to ensure bar is level relative to a significant feature of the truck, and readjust if necessary*
- 9** *Wire driving lights to existing wiring (if applicable)*
- 10** *Insert towpin and tighten eyebolts (75-100 ft-lbs)*
- 11** *Re-check the mounting bracket and bolts after the first 5,000km and every 3-6 months.*

Eyebolts are secured in the channel with a 7/8" rubber washer. If you need to re-install the washer, insert the eyebolt into the hole, and thread a washer onto the back side of the eyebolt, approximately halfway onto the threaded part of the eyebolt.