



# SUPPLEMENTAL INSTALLATION INSTRUCTIONS KENWORTH

Item #	Vehicle Description
KW22	Kenworth T880 - Model with outside tow receivers

---

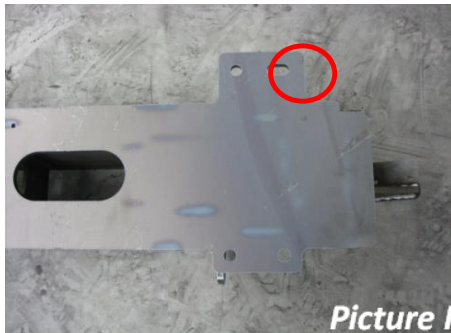
## **IMPORTANT**

- A** Herd Bullbars are vehicle "Make & Model" specific. Use of a bullbar on a vehicle other than the model it was designed for will constitute improper use of the product and may void warranty.
- B** Unless otherwise specified, Grade 8 hardware is to be used. For the purposes of these instructions, OE hardware means the truck's original factory hardware.
- C** The drop-forged eyebolts are an integral part of the strength of Herd bullbars. When tightened firmly, they will minimize vibration and provide superior impact resistance.
- D** To help maintain the factory finish, avoid acid wash.

---

### Step

- 1 *Remove factory bumper*
- 2 *Mount Herd bracket to truck using only one top outside bolt on each side (Picture I)*



- 3 *Locate the top two holes of the six that are near the tow box (on the Herd steel bracket) and mark the crossmember behind those holes for drilling (Picture II)*

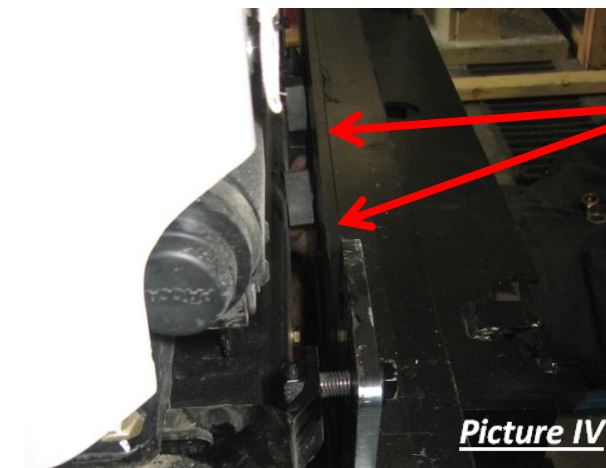


**4** *Drill holes in the truck's crossmember to accommodate 3/4" bolts in the two locations marked out in step 3.*

**5** *Place loose mount (1-MP-KW03.BP) (Picture III) inside the crossmember from one side. Orient the part so that the nuts are at the top and that a bolt from the front of the truck goes through the plate before threading into the nut. Locate the part horizontally and to hold it in place for mounting.*



**6** *Place packers (1-BR-MP-KW03.40) (Picture IV) in between Herd steel bracket and crossmember where holes were drilled, and mount with supplied (3/4" x 3") bolts from the bracket side, through the packers and crossmember, and into the loose mount.*



**7** *Attach bullbar to bracket using Herd supplied hinge bolts*

*\* For DFLT & Defender models only: To install the hinge bolts, the bumper must be in the open (down) position to allow the bottom lip to go under and around the steel hinge.*

**8** *Check to ensure bar is level relative to a significant feature of the truck, and readjust if necessary*

**9** *Wire driving lights to existing wiring (if applicable)*

**10** *Insert towpin and tighten eyebolts (75-100 ft-lbs)*

**11** *Re-check the mounting bracket and bolts after the first 5,000km and every 3-6 months.*