



INSTALLATION INSTRUCTIONS

KENWORTH

Item

KW22

Vehicle Description

Kenworth T880 With Supp SBA (2014-2015)

IF YOU HAVE A T880 WITH THE OUTSIDE TOW RECEIVERS (IE NO CENTER TOW PIN), THEN YOU MUST USE THE SUPPLEMENTAL INSTALLATION INSTRUCTIONS

IMPORTANT

A

Herd Bumpers are vehicle "Make & Model" specific. Use of this product on a vehicle other than the model it was designed for will constitute improper use of the product and will void warranty.

B

Unless otherwise specified, Grade 8 hardware is to be used. For the purposes of these instructions, OE hardware means the truck's original factory hardware.

C

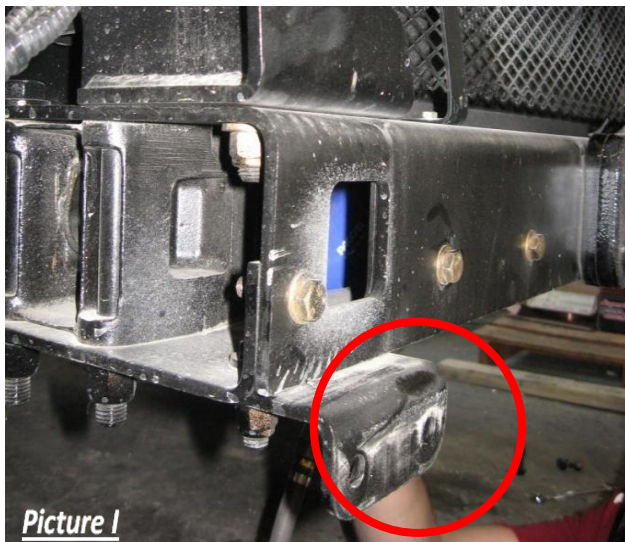
The drop-forged eyebolts are an integral part of the strength of Herd bumpers. When tightened firmly, they will minimize vibration and provide superior impact resistance.

D

To help maintain the factory finish, avoid acid wash.

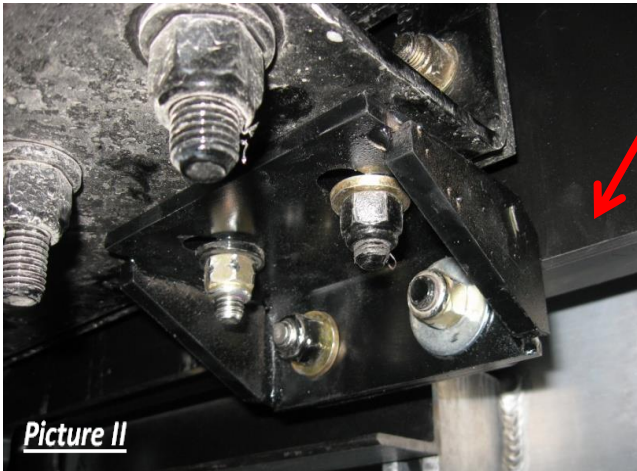
Step

- 1 *Remove factory bumper, disconnect factory driving lights if applicable*
- 2 *Remove factory tow pin*
- 3 *Remove the lower angle brackets located under front crossmember (Picture 1)*

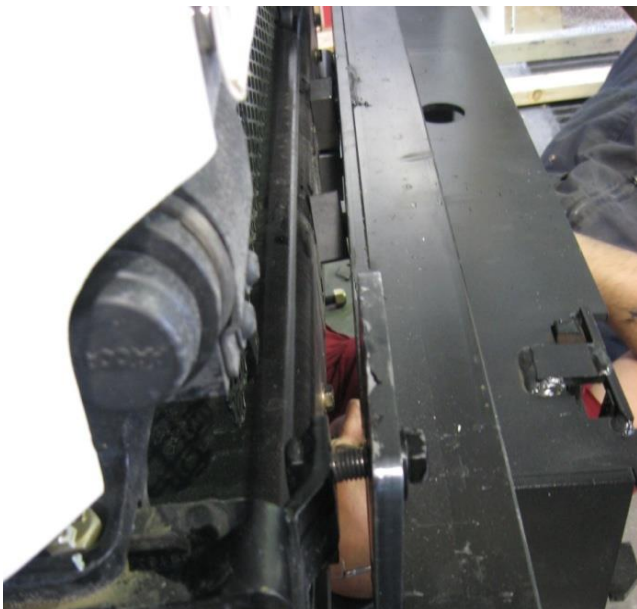




- 4 **Install Herd steel angle bracket to truck using OE hardware (Picture II)**

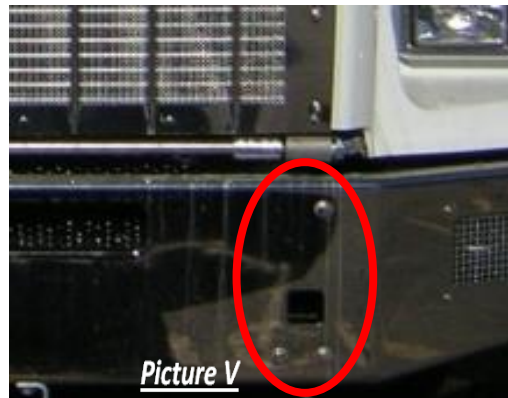


- 5 **Install Herd steel bracket to truck using OE hardware (do not tighten at this point of installation) and install packers using Herd supplied bolts (3/4" x 3"). (Picture III)**



Note: Some bolt holes may not be used, due to alternate factory bumper mounting configurations.

(Picture IV & V)



- 6 Attach the Aluminum Bullbar to the Herd steel bracket using Herd supplied hardware (3/4" dia).**

Note: * For DFLT & Defender models only: To install the hinge bolts, the bumper must be in the open (down) position to allow the bottom lip to go under and around the steel hinge.

- 7 Check to ensure bar is level relative to a significant feature of the truck, and readjust if necessary**
- 8 Wire driving lights to existing wiring (if applicable)**
- 9 Insert towpin and tighten eyebolts (75-100 ft-lbs)**
- 10 Re-check the mounting bracket and bolts after the first 5,000km and every 3-6 months.**

Eyebolts are secured in the channel with a 7/8" rubber washer. If you need to re-install the insert the eyebolt into the hole, and thread a washer onto the back side of the eyebolt, halfway onto the threaded part of the eyebolt.