



# INSTALLATION INSTRUCTIONS

## MACK

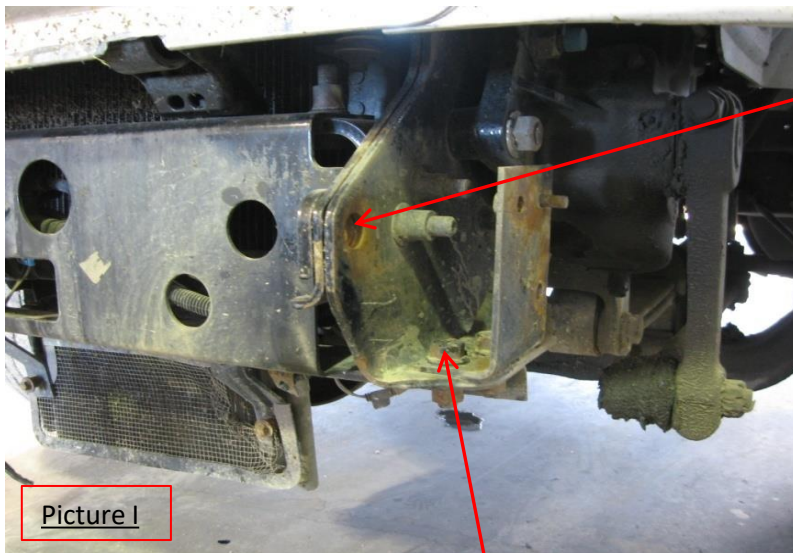
**Item #**                      **Vehicle Description**  
*MK08*                              *Mack Vision CXN Pre-2004*

### IMPORTANT

- A** Herd Bullbars are vehicle "Make & Model" specific. Use of a bullbar on a vehicle other than the model it was designed for will constitute improper use of the product and may void warranty.
- B** Unless otherwise specified, Grade 8 hardware is to be used. For the purposes of these instructions, OE hardware means the truck's original factory hardware.
- C** The drop-forged eyebolts are an integral part of the strength of Herd bullbars. When tightened firmly, they will minimize vibration and provide superior impact resistance.
- D** To help maintain the factory finish, avoid acid wash.

### Step

- 1**      *Remove factory bumper and tow loops from truck. (see Picture I)*



Tow Loop

Picture I

Remove These  
2 Bolts

- 2**     *Install Herd steel bracket onto truck using supplied hardware.*
- 3**     *Verify that all mounting locations are used*
- 4**     *Check to ensure bar is level relative to a significant feature of the truck, and readjust if necessary*
- 6**     *Attach bullbar to bracket using Herd supplied hinge bolts*  
\* For DFLT models only: To install the hinge bolts, the bumper must be in the open (down) position to allow the bottom lip to go under and around the steel hinge.
- 6**     *Install/wire driving lights to existing wiring (if applicable)*
- 7**     *Insert towpin and tighten eyebolts (75-100 ft-lbs)*
- 8**     *Re-check the mounting bracket and bolts after the first 5,000km and every 3-6 months.*