



INSTALLATION INSTRUCTIONS

MACK

Item #
MK09

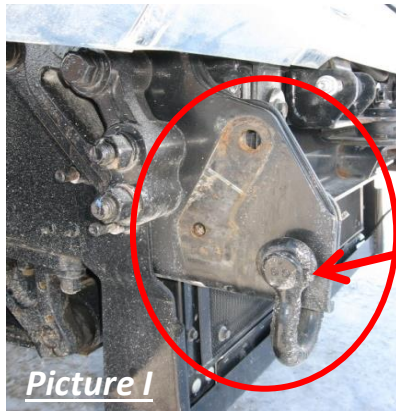
Vehicle Description
Mack Titan

IMPORTANT

- A** Herd Bullbars are vehicle "Make & Model" specific. Use of a bullbar on a vehicle other than the model it was designed for will constitute improper use of the product and may void warranty.
- B** Unless otherwise specified, Grade 8 hardware is to be used. For the purposes of these instructions, OE hardware means the truck's original factory hardware.
- C** The drop-forged eyebolts are an integral part of the strength of Herd bullbars. When tightened firmly, they will minimize vibration and provide superior impact resistance.
- D** To help maintain the factory finish, avoid acid wash.

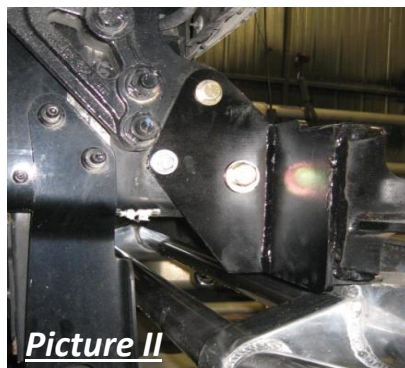
Step

- 1** *Remove factory bumper and tow loops from truck. (see Picture I)*



Tow Loop

- 2** *Install Herd steel bracket onto truck using OEM & supplied hardware (see Picture II)*



- 3 **Check to ensure bar is level relative to a significant feature of the truck, and readjust if necessary**
- 4 **Attach bullbar to bracket using Herd supplied hinge bolts**
*** For DFLT & Defender models only:** To install the hinge bolts, the bumper must be in the open (down) position to allow the bottom lip to go under and around the steel hinge.
- 5 **Install & wire driving/signal lights to existing wiring (if applicable)**
If ordered with Factory Driving Light Option: mount factory driving lights form the front of the bumper and attach to mounting bracket (see Picture III). Connect driving lights to existing wiring (wiring may need to be extended).
- 6



- 7 **Insert towpin and tighten eyebolts (75-100 ft-lbs)**
- 8 **Re-check the mounting bracket and bolts after the first 5,000km and every 3-6 months.**

Eyebolts are secured in the channel with a 7/8" rubber washer. If you need to re-install the washer, insert the eyebolt into the hole, and thread a washer onto the back side of the eyebolt, approximately halfway onto the threaded part of the eyebolt.