



# INSTALLATION INSTRUCTIONS

## MACK

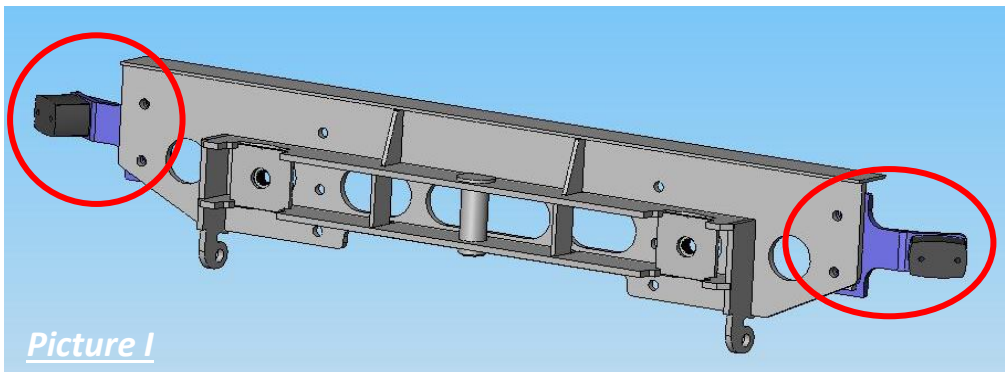
Item #	Vehicle Description
MK10	Mack Granite SBA

### IMPORTANT

- A** Herd Bullbars are vehicle "Make & Model" specific. Use of a bullbar on a vehicle other than the model it was designed for will constitute improper use of the product and may void warranty.
- B** Unless otherwise specified, Grade 8 hardware is to be used. For the purposes of these instructions, OE hardware means the truck's original factory hardware.
- C** The drop-forged eyebolts are an integral part of the strength of Herd bullbars. When tightened firmly, they will minimize vibration and provide superior impact resistance.
- D** To help maintain the factory finish, avoid acid wash.

### Step

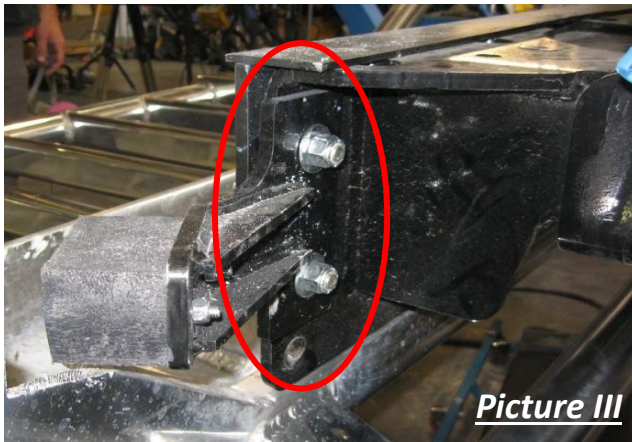
- 1 *Remove factory bumper*
- 2 *Remove bolted-on Impact Plates from Herd steel bracket, and discard 3/8" thick spacers. Retain hardware. (Picture 1)*



- 3** *Install Herd steel bracket onto truck using OE hardware on centre 6 holes only (Picture II)*



- 4** *Install Impact Plates on the back side on the outside top two mounting holes using the bolts from Step 2 (Picture III). When tightening the bolts, pull the Impact Plates to the outside to ensure they are level.*



- 5** *Attach bullbar to bracket using Herd supplied hinge bolts*  
*\* For DFLT & Defender models only: To install the hinge bolts, the bumper must be in the open (down) position to allow the bottom lip to go under and around the steel hinge.*
- 6** *Verify that all mounting locations are used*
- 7** *Check to ensure bar is level relative to a significant feature of the truck, and readjust if necessary*
- 8** *Install/wire driving lights to existing wiring (if applicable)*
- 9** *Tighten eyebolts (75-100 ft-lbs)*
- 10** *Re-check the mounting bracket and bolts after the first 5,000km and every 3-6 months.*