



INSTALLATION INSTRUCTIONS

PETERBILT

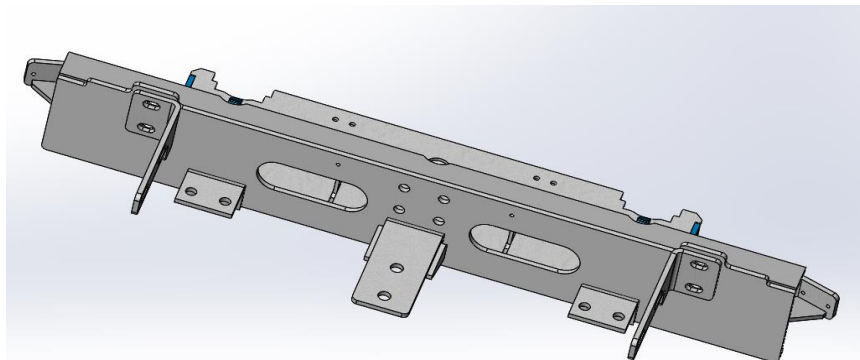
Item #	Vehicle Description
PB04	Peterbilt 335

IMPORTANT

- A** Herd Bullbars are vehicle "Make & Model" specific. Use of a bullbar on a vehicle other than the model it was designed for will constitute improper use of the product and may void warranty.
- B** Unless otherwise specified, Grade 8 hardware is to be used. For the purposes of these instructions, OE hardware means the truck's original factory hardware.
- C** The drop-forged eyebolts are an integral part of the strength of Herd bullbars. When tightened firmly, they will minimize vibration and provide superior impact resistance.
- D** To help maintain the factory finish, avoid acid wash.

Step

- 1 *Remove factory bumper.*
- 2 *Remove center tow hook.*
- 3 *Install Herd steel centre and side sub-mounts to truck using OE hardware.*
- 4 *Install Herd steel bracket to center and side sub-mounts using supplied hardware.*



- 5 *Verify that all mounting locations are used and tighten all bolts.*
- 6 *Attach bullbar to bracket using Herd supplied hinge bolts.*
** For DFLT & Defender models only: To install the hinge bolts, the bumper must be in the open (down) position to allow the bottom lip to go under and around the steel hinge.*

- 7** ***Check to ensure bar is level relative to a significant feature of the truck, and readjust if necessary.***
- 8** ***Wire driving lights to existing wiring (if applicable).***
- 9** ***Insert towpin and tighten eyebolts (75-100 ft-lbs).***
- 10** ***Re-check the mounting bracket and bolts after the first 5,000km and every 3-6 months.***

Eyebolts are secured in the channel with a 7/8" rubber washer. If you need to re-install the washer, insert the eyebolt into the hole, and thread a washer onto the back side of the eyebolt, approximately halfway onto the threaded part of the eyebolt.