

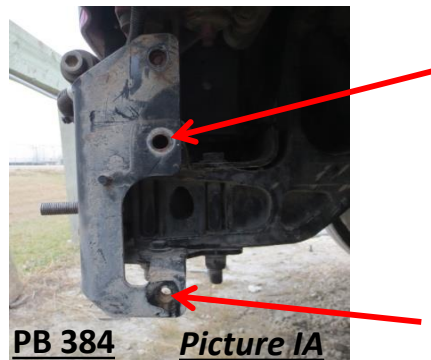
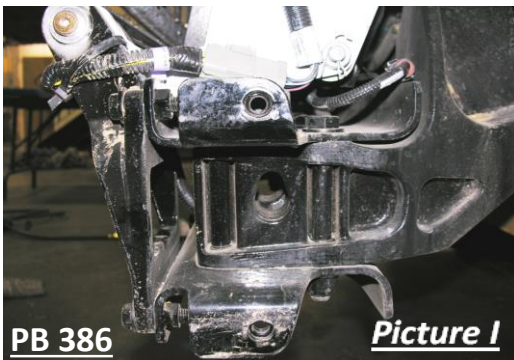
Item #	Vehicle Description
PB09	Peterbilt 384 / 386

IMPORTANT

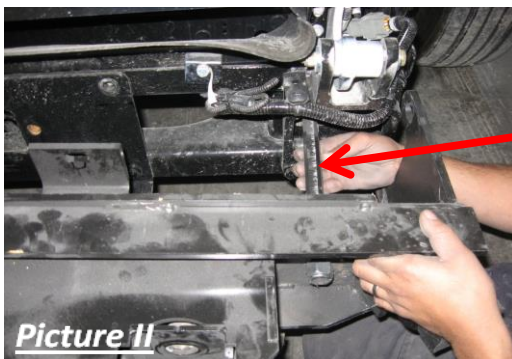
- A** Herd Bullbars are vehicle "Make & Model" specific. Use of a bullbar on a vehicle other than the model it was designed for will constitute improper use of the product and may void warranty.
- B** Unless otherwise specified, Grade 8 hardware is to be used. For the purposes of these instructions, OE hardware means the truck's original factory hardware.
- C** The drop-forged eyebolts are an integral part of the strength of Herd bullbars. When tightened firmly, they will minimize vibration and provide superior impact resistance.
- D** To help maintain the factory finish, avoid acid wash.

Step

- 1 *Remove factory bumper and brackets to expose mounting brackets (Picture I and IA)*



- 2 *Insert Herd loose brackets into the tow receivers with the threaded end out, and secure in place with the factory towpins. (Picture II)*



Herd loose bracket

- 3** *Install Herd steel bracket to truck using OE hardware*
- 4** *Tighten 3/4" nut onto threaded end of the tow receiver brackets to 70-80 ft-lbs. DO NOT OVERTIGHTEN.*
- 5** *Verify that all mounting locations are used*

6 *Loosely attach Herd sub mounts to the back side of the bar bracket, using the supplied hardware inserted into the holes on the outer edge of the bar bracket. Note: for pre 2013 trucks use the two inner holes, for 21013+ trucks use the two outer holes. Once secured to frame tighten bolts.*

7 *Attach bullbar to bracket using Herd supplied hinge bolts*

** For DFLT & Defender models only: To install the hinge bolts, the bumper must be in the open (down) position to allow the bottom lip to go under and around the steel hinge.*

8 *Check to ensure bar is level relative to a significant feature of the truck, and readjust if necessary*

9 *Wire driving lights to existing wiring (if applicable)*

10 *Insert towpin and tighten eyebolts (75-100 ft-lbs)*

11 *Re-check the mounting bracket and bolts after the first 5,000km and every 3-6 months.*

Eyebolts are secured in the channel with a 7/8" rubber washer. If you need to re-install the washer, insert the eyebolt into the hole, and thread a washer onto the back side of the eyebolt, approximately halfway onto the threaded part of the eyebolt.