



INSTALLATION INSTRUCTIONS

PETERBILT

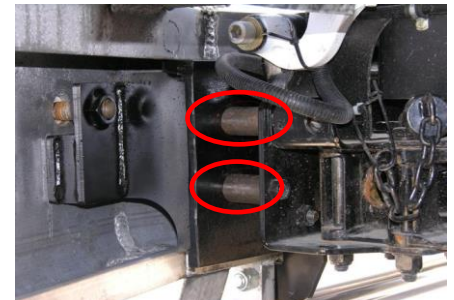
Item #	Vehicle Description
PB12	Peterbilt 367 (SBA) - High Hood

IMPORTANT

- A** Herd Bullbars are vehicle "Make & Model" specific. Use of a bullbar on a vehicle other than the model it was designed for will constitute improper use of the product and may void warranty.
- B** Unless otherwise specified, Grade 8 hardware is to be used. For the purposes of these instructions, OE hardware means the truck's original factory hardware.
- C** The drop-forged eyebolts are an integral part of the strength of Herd bullbars. When tightened firmly, they will minimize vibration and provide superior impact resistance.
- D** To help maintain the factory finish, avoid acid wash.

Step

- 1 **Remove factory bumper**
Install Herd steel bracket to truck using OE hardware, IF the truck has not been supplied with the a center tow section from the factory , you will need to use the packers(spacers) as shown in the photo behind all mounting bolts except the top four. Use metric hardware supplied.
- 2 **Verify that all matching mounting locations are used**
- 3 **Attach bullbar to bracket using Herd supplied hinge bolts**
** For DFLT & Defender models only: To install the hinge bolts, the bumper must be in the open (down) position to allow the bottom lip to go under and around the steel hinge.*
- 4 **Check to ensure bar is level relative to a significant feature of the truck, and readjust if necessary**
- 5 **Wire driving lights to existing wiring (if applicable)**
- 6 **Insert towpin and tighten eyebolts (75-100 ft-lbs)**
- 7 **Re-check the mounting bracket and bolts after the first 5,000km and every 3-6 months.**



Eyebolts are secured in the channel with a 7/8" rubber washer. If you need to re-install the washer, insert the eyebolt into the hole, and thread a washer onto the back side of the eyebolt, approximately halfway onto the threaded part of the eyebolt.