



# INSTALLATION INSTRUCTIONS

## PETERBILT

Item #

PB23

Vehicle Description

Peterbilt 367 SFA Sloped Hood

### IMPORTANT

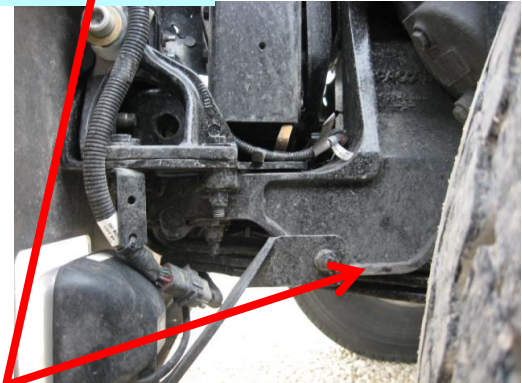
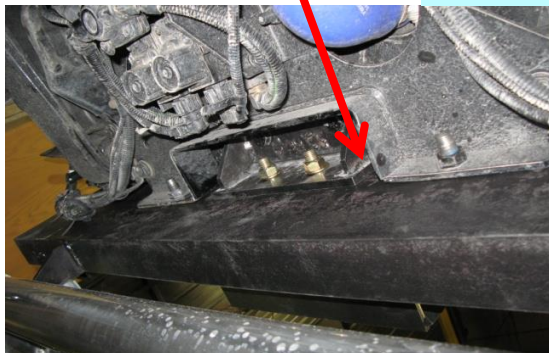
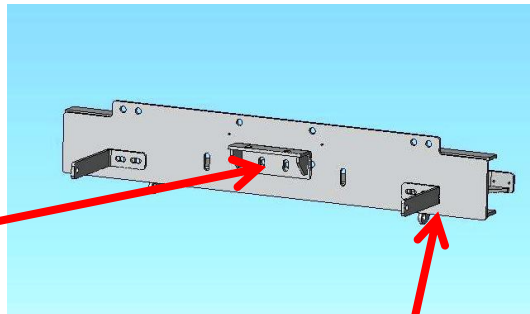
- A** Herd Bullbars are vehicle "Make & Model" specific. Use of a bullbar on a vehicle other than the model it was designed for will constitute improper use of the product and may void warranty.
- B** Unless otherwise specified, Grade 8 hardware is to be used. For the purposes of these instructions, OE hardware means the truck's original factory hardware.
- C** The drop-forged eyebolts are an integral part of the strength of Herd bullbars. When tightened firmly, they will minimize vibration and provide superior impact resistance.
- D** To help maintain the factory finish, avoid acid wash.

### Step

- 1 **Remove factory bumper**

Install Herd steel bracket to truck using OE hardware. If the truck is not equipped with a centre towpin, install Centre loose bracket (shown below) and Lower loose brackets (shown below) with supplied hardware. Failure to mount these loose brackets will greatly effect the towing and impact quality of the bumper and may void warranty.

Centre loose bracket.  
(Underside view)



Lower loose bracket bolts to the back of the steel bracket & to this bolt on the frame

- 3**     ***Verify that all matching mounting locations are used***
- 4**     ***Attach bullbar to bracket using Herd supplied hinge bolts***  
\* For DFLT & Defender models only: To install the hinge bolts, the bumper must be in the open (down) position to allow the bottom lip to go under and around the steel hinge.
- 5**     ***Check to ensure bar is level relative to a significant feature of the truck, and readjust if necessary***
- 6**     ***Wire driving lights to existing wiring (if applicable)***
- 7**     ***Insert towpin and tighten eyebolts (75-100 ft-lbs)***
- 8**     ***Re-check the mounting bracket and bolts after the first 5,000km and every 3-6 months.***

***Eyebolts are secured in the channel with a 7/8" rubber washer. If you need to re-install the washer, insert the eyebolt into the hole, and thread a washer onto the back side of the eyebolt, approximately halfway onto the threaded part of the eyebolt.***

