

- This document shows how to install your new Truck Guard onto your truck.
- Ensure that you have completely read and understand document **S017 - Safety** before beginning this installation procedure.
- You will require the following tools and supplies for installation:

|                            |                           |                                   |   |
|----------------------------|---------------------------|-----------------------------------|---|
| • Screwdrivers             | • Pliers                  | • Wire Ties                       | • Level   |
| • Wrenches (various sizes) | • Sockets (various sizes) | • Socket Wrenches (various sizes) | • RTV Silicone (if truck equipped with parking sensors) |

### I. Removing the OEM front bumper

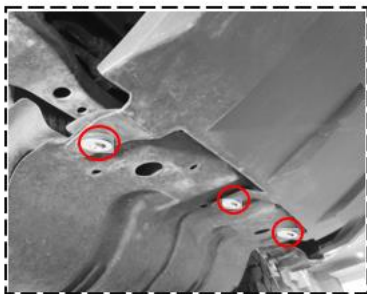


Figure 1a: Skid Plate Fastener Removal



Figure 1d: Frame Rail Fasteners Removal (Driver Side Shown)



Figure 1c: Fender Liner Removal (Driver Side Shown)

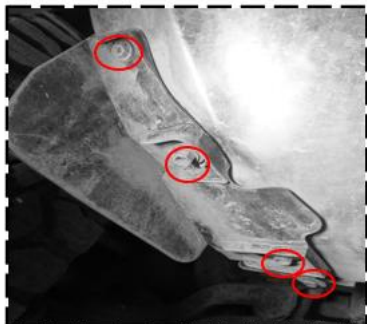


Figure 1b: Bottom Edge Fender Liner Fastener Removal (Passenger Side Bottom-Up View Shown)

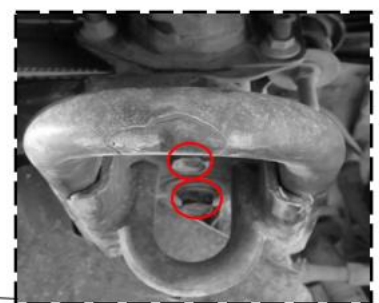


Figure 1e: Remove OEM Tow Loop (Driver Side Shown)

Figure 1: Removing the OEM front bumper (Your Truck may not be exactly as shown)

1. Unplug the fog light and front parking sensors connector (if applicable). Detach the block heater cord (if applicable) from the OEM front bumper before removing it.
2. Remove the 3 screws that connect skid plate to the OEM bumper as shown in Figure 1a.
3. Remove 2 screws and 2 bolts that hold the fender liner to the bumper; see Figure 1b.
4. Remove the 2 screws and 1 plastic clip from the fender liner on both driver side and passenger side as shown in Figure 1c.

5. Remove the 4 fasteners to remove the OEM front bumper from the frame rails (4 per side); see Figure 1d.
6. Remove the OEM tow loops by removing the 2 bolts as shown in Figure 1e. The OEM tow loops and bolts will be reused to mount the HERD Submounts.

### II. Installing the Submounts



Figure 2a: Submount Installation

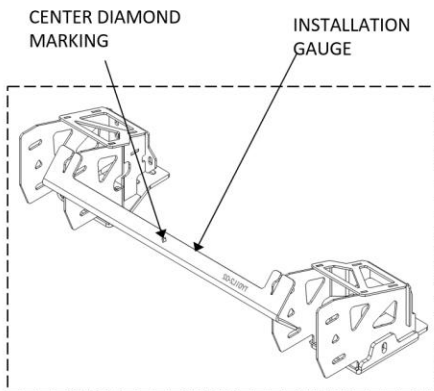


Figure 2b: Using the Installation Gauge

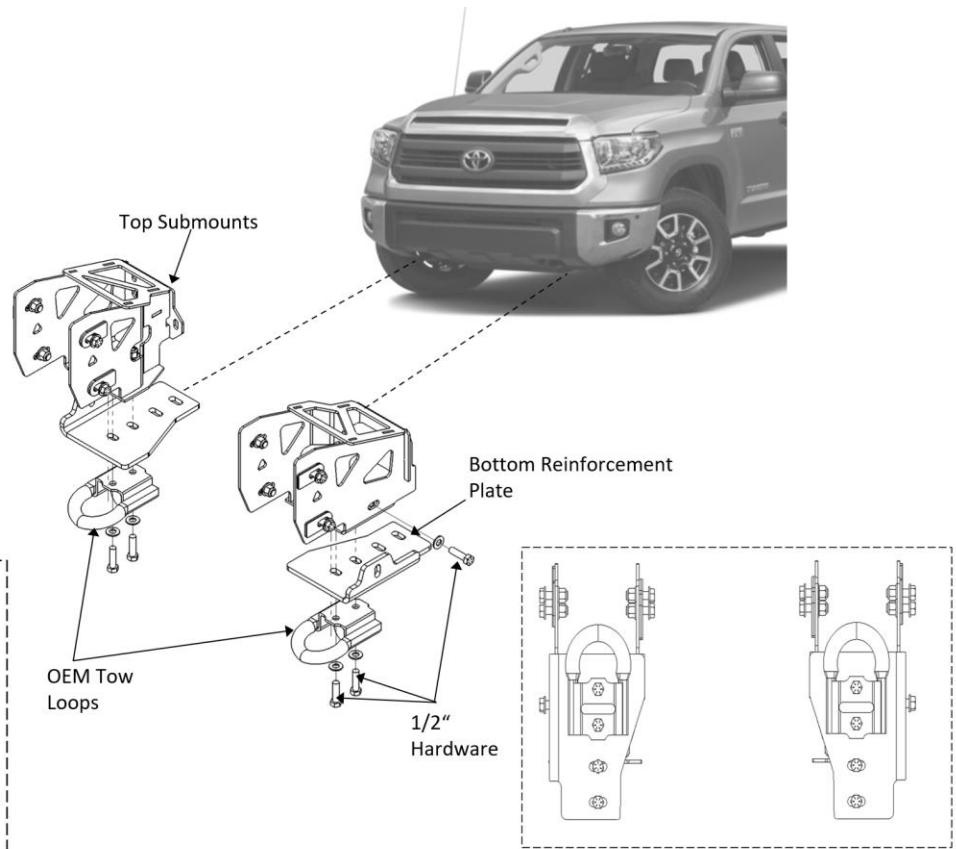


Figure 2c: OEM Tow Loops Orientation (Bottom View)

Figure 2: Installing the Submounts

1. Install the Top Submounts using OEM fasteners to the front of the truck frame and fasten them loosely.
2. Install the Bottom Reinforcement Plate using the OEM tow hook bolts to the bottom of the truck frame as shown in Figure 2a.
3. Use the Installation Gauge to position the Submounts; the center diamond marking should line up with the center of the truck; see Figure 2b.
4. With the Installation Gauge still in position, tighten all the OEM mounting fasteners. **Torque the M10 Hardware to 50 ft-lb and M14 Hardware to 130 ft-lb.**

5. Remove the Installation Gauge.
6. Secure the Top Submount and Bottom Reinforcing Plate by using 1/2" Hardware. **Torque the 1/2" Hardware to 96 ft-lb.**
7. Install the OEM tow loops to the bottom of the Submounts using the 1/2" Hardware as shown in Fig 2c. **Torque the 1/2" Hardware to 96 ft-lb.**

### III. Installing the HERD Truck Guard

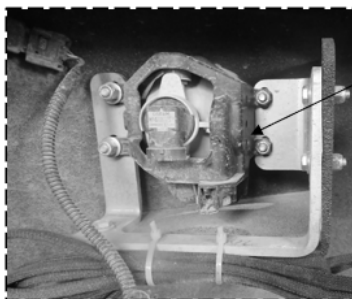


Figure 3a: OEM Fog Lights Installation (Driver Side Shown)

OEM Fog Light

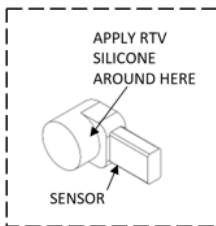
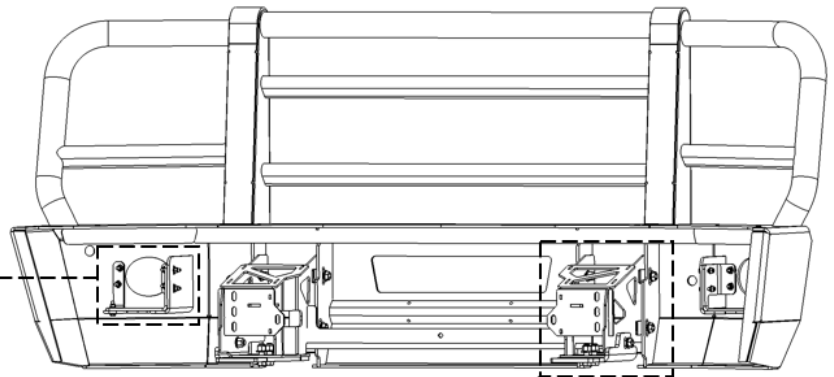


Figure 3d: Parking Sensor Installation

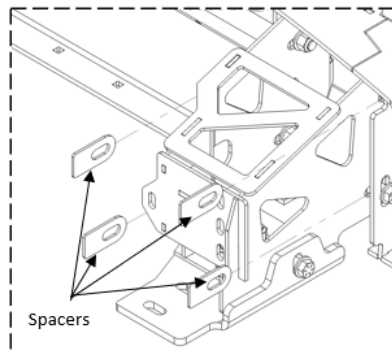


Figure 3c: Truck Guard Installation

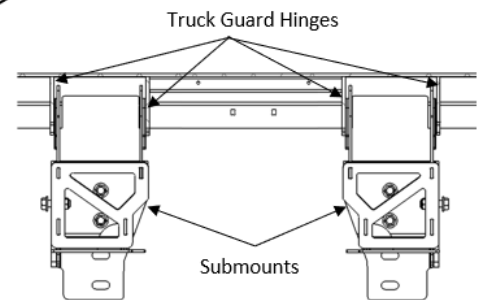


Figure 3b: Submount Position (Cut-away view from above)

Figure 3: Installing the Truck Guard (view from behind)

1. Remove the OEM fog lights from the OEM front bumper (if applicable).
2. Install the OEM fog lights with the provided brackets to the HERD Truck Guard as shown in Figure 3a.
3. Install the HERD Truck Guard to the Submounts; **follow the positioning as shown in Figure 3b and Figure 3c.** Adjust the HERD Truck Guard and use the provided Spacers (1/16" and/or 1/8") as necessary. Tighten all mounting hardware after adjustment, and **torque 1/2" Hardware to 96 ft-lb.**

4. Install the block heater cord to the HERD Truck Guard (If applicable).
5. If the truck has parking sensors, remove them from the OEM front bumper together with sensor wiring harness. Take note of the location of each sensor and harness. Apply RTV silicone all around the cylindrical section of the sensors, then insert the sensors through HERD Truck Guard from front side of the bumper; see Figure 3d. Ensure locations of the sensors match where they were located on the OEM front bumper.
6. Let the adhesive cure at room temperature. Plug the OEM fog lights and sensor wiring harness into OEM fog lights and sensors respectively (if applicable). Ensure that each sensor and OEM light functions normally. Secure loose wiring harness (sensors and OEM fog lights) with cable ties.

**Important: Check mounting points' hardware after the first 5000 km and every 3-6 months. Re-torque as necessary.**