

INSTALLATION INSTRUCTIONS

VOLVO

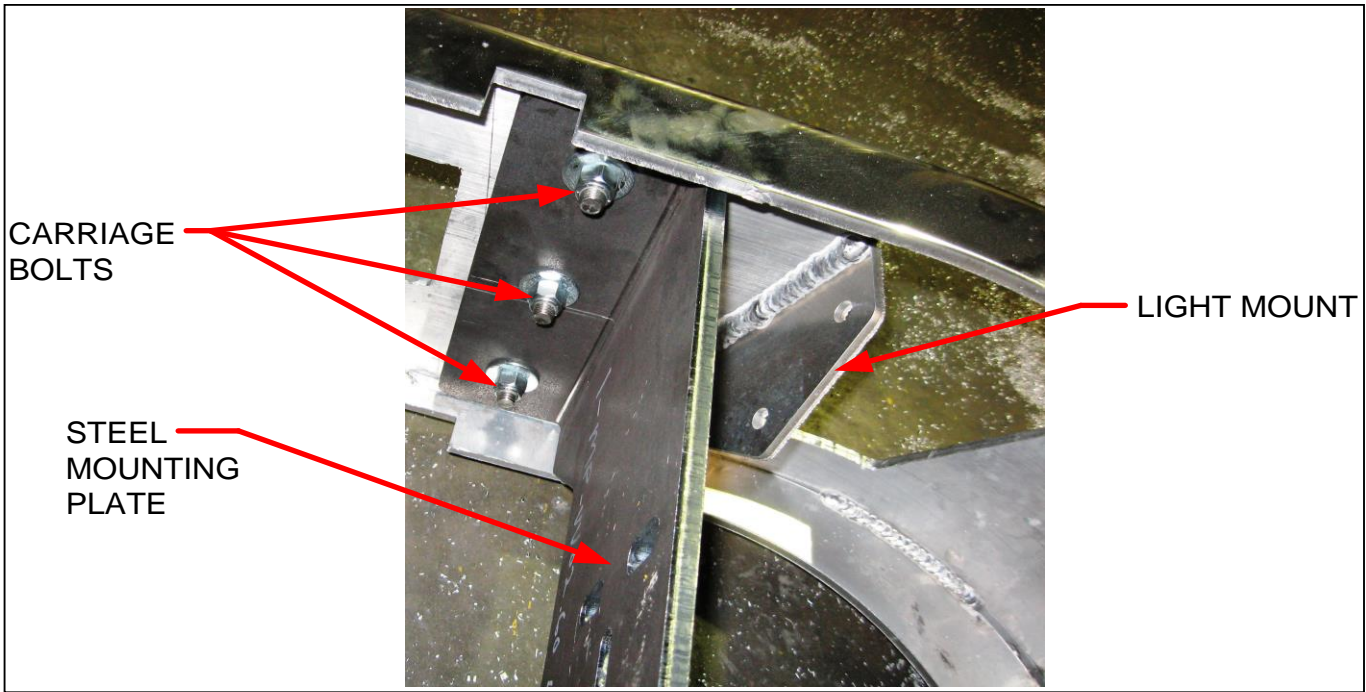
Item #	Vehicle Description
VV02BULL	Volvo VN - New style 04+ (incl late 2003)

IMPORTANT

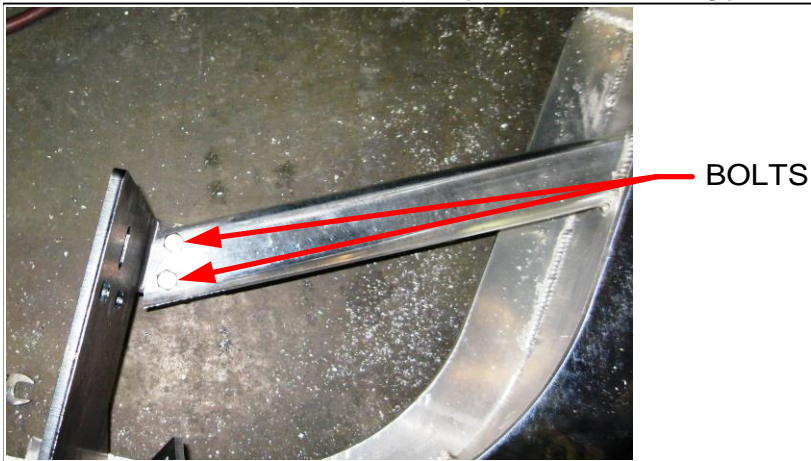
- A** Herd Bumpers are vehicle "Make & Model" specific. Use of a bumper on a vehicle other than the model it was designed for will constitute improper use of the product and may void warranty.
 - B** Unless otherwise specified, Grade 8 hardware is to be used. For the purposes of these instructions, OE hardware means the truck's original factory hardware.
 - C** To help maintain the factory finish, avoid acid wash.
-

Step

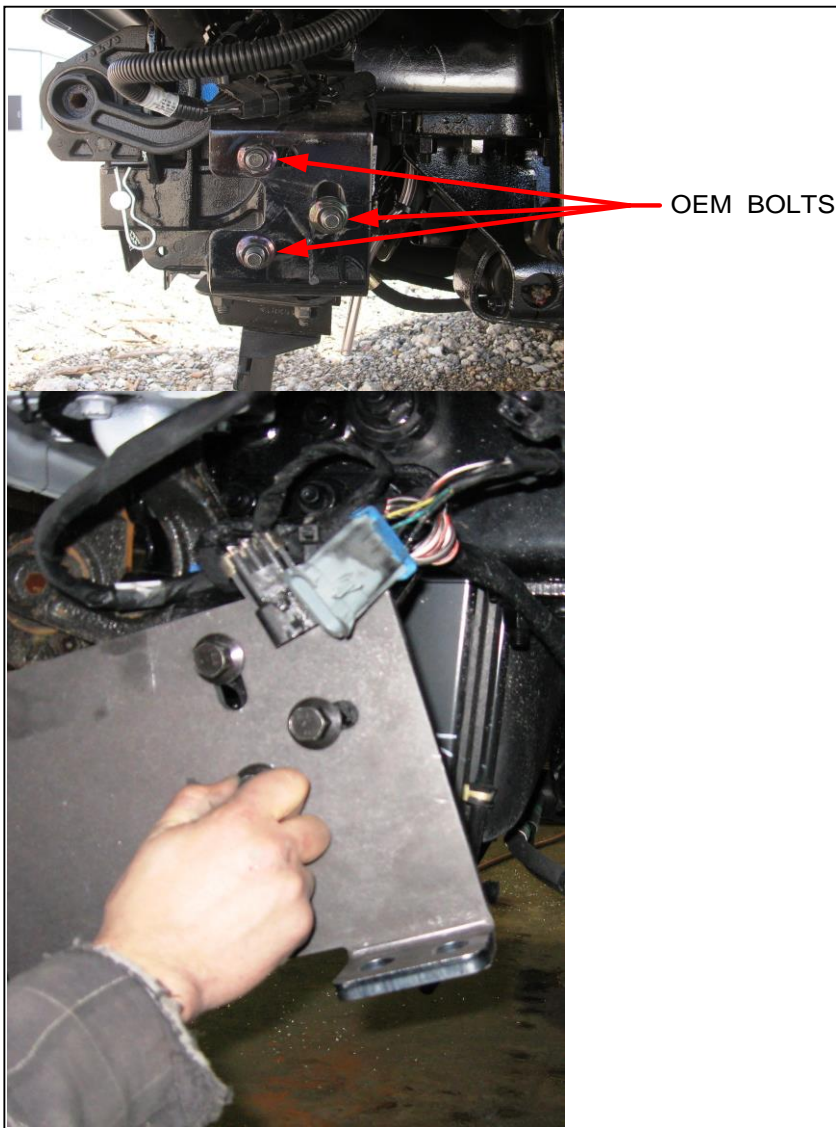
- 1 *Remove factory bumper.*
 - 2 *Remove Volvo driving lights from factory bumper.*
 - 3 *Install Volvo driving lights in Herd bumper using mounting locations provided, shown below. (some shimming of the mounting screws may be required to aim lights)*
-



- 4** *Install Herd aluminum bumper to steel mounting plates with supplied carriage bolts, as shown above.*



- 5** *Attach side support to steel mounting plate with supplied bolts ,as shown above. Make sure that the nuts are on the bottom.*
- 6** *Install Herd bumper to truck with OE bolts, as shown below.*



- 7** *Verify that all mounting locations are used.*
- 8** *Adjust bumper to insure there is clearance required to open and close the hood.*
- 9** *Check to ensure bar is level relative to a significant feature of the truck, and readjust if necessary.*
- 10** *Wire driving lights to existing wiring.*
- 11** *Re-check the mounting bolts after the first 5,000km and every 3-6 months.*