



INSTALLATION INSTRUCTIONS

WESTERN STAR

Item

WS12

Vehicle Description

Western Star 4800/4900 SA (SBA)



If your truck is **NOT** equipped with a cast center tow section, this bumper cannot be installed.

IMPORTANT

- A** Herd Bullbars are vehicle "Make & Model" specific. Use of a bullbar on a vehicle other than the model it was designed for will constitute improper use of the product and may void warranty.
- B** Unless otherwise specified, Grade 8 hardware is to be used. For the purposes of these instructions, OE hardware means the truck's original factory hardware.
- C** The drop-forged eyebolts are an integral part of the strength of Herd bullbars. When tightened firmly, they will minimize vibration and provide superior impact resistance.
- D** To help maintain the factory finish, avoid acid wash.

If the truck is equipped with a skid plate follow step 1A otherwise continue at step 2.

Step

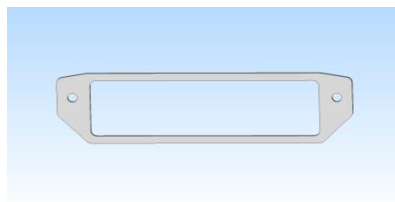
1 Remove factory bumper and factory driving lights (if applicable).

1A

Use mounting locations shown in Picture 1A. Use mounting plate (picture 1B) on the front of the cast centre tow section.

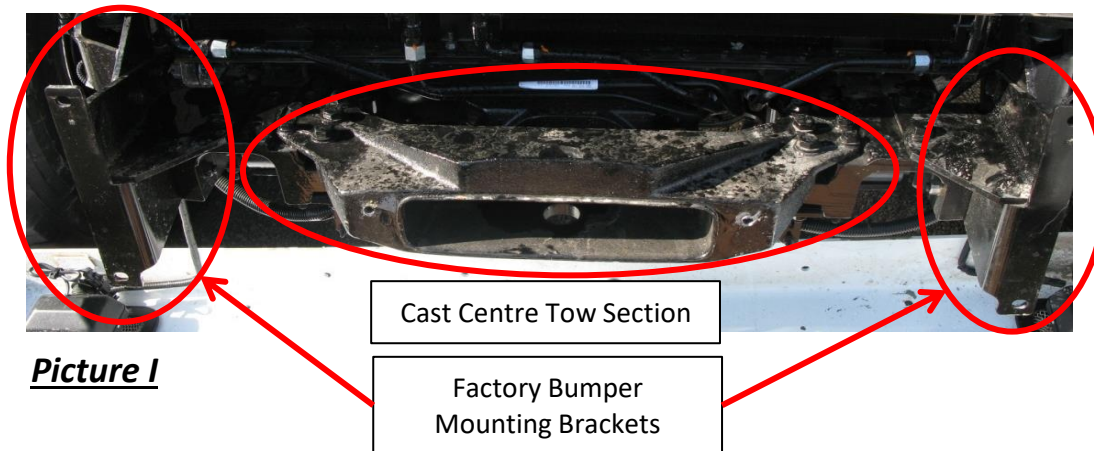


Picture 1A



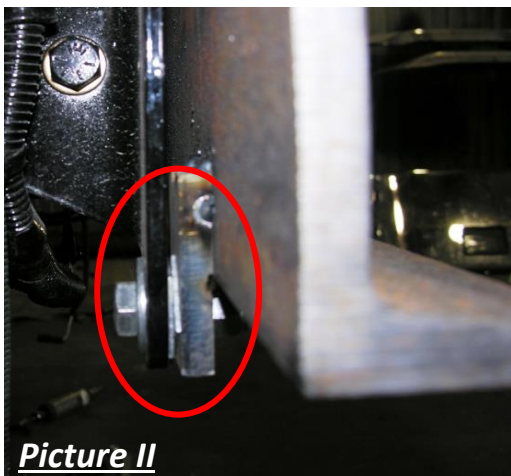
Picture 1B

- 2 If the truck is a "Logger", the cast center tow section that protrudes from the front of the truck needs to be removed and two additional "Herd" brackets are required (1-MP-WS12.70(LH & RH) or 1-MP-WS12.71(LH & RH), depending on the truck). These new bracket are to replace the existing factory supplied bumper mounting brackets (Picture I).



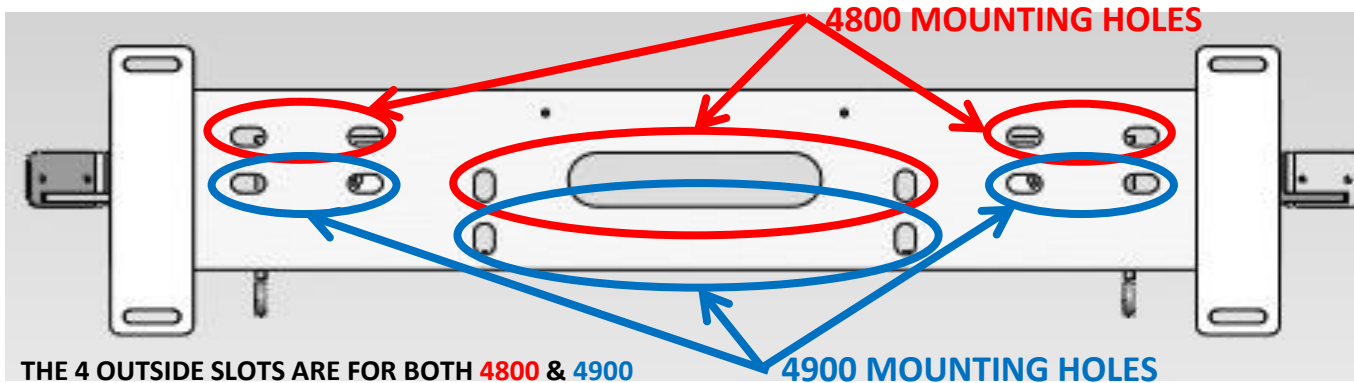
Picture I

- 3 Install Herd steel bracket to truck using supplied hardware (thin shims have been provide and may be required at the outside most mounting holes to ensure the bar sits square on the truck - see Picture II)



Picture II

- 4 Verify that all mounting locations are used



- 5 Attach bullbar to bracket using Herd supplied hinge bolts
* For DFLT & Defender models only: To install the hinge bolts, the bumper must be in the open (down) position to allow the bottom lip to go under and around the steel hinge.

- 6** ***Check to ensure bar is level relative to a significant feature of the truck, and readjust if necessary***
- 7** ***Wire driving lights to existing wiring (if applicable)***
- 8** ***Insert towpin and tighten eyebolts (75-100 ft-lbs)***
- 9** ***Re-check the mounting bracket and bolts after the first 5,000km and every 3-6 months.***

Eyebolts are secured in the channel with a 7/8" rubber washer. If you need to re-install the washer, insert the eyebolt into the hole, and thread a washer onto the back side of the eyebolt, approximately halfway onto the threaded part of the eyebolt.