



INSTALLATION INSTRUCTIONS

WESTERN STAR

Item #	Vehicle Description
WS13	Western Star 4900 FA/EX Highway (Lowmax)

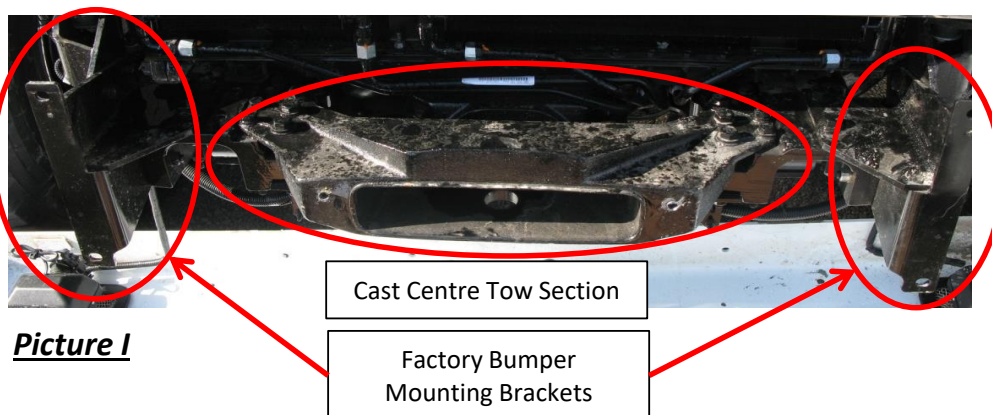
IMPORTANT

- A** Herd Bullbars are vehicle "Make & Model" specific. Use of a bullbar on a vehicle other than the model it was designed for will constitute improper use of the product and may void warranty.
- B** Unless otherwise specified, Grade 8 hardware is to be used. For the purposes of these instructions, OE hardware means the truck's original factory hardware.
- C** The drop-forged eyebolts are an integral part of the strength of Herd bullbars. When tightened firmly, they will minimize vibration and provide superior impact resistance.
- D** To help maintain the factory finish, avoid acid wash.

Step

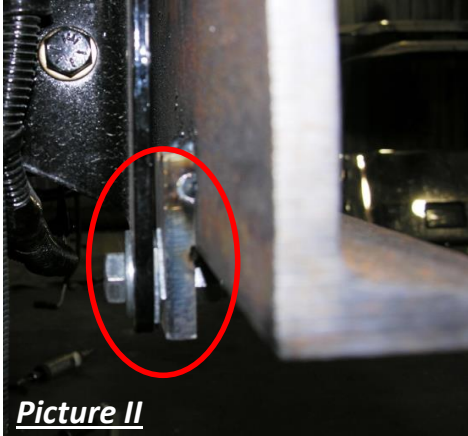
- 1 Remove factory bumper and factory driving lights (if applicable).

- 2 If the truck is a "Logger", the cast center tow section that protrudes from the front of the truck needs to be removed and two additional "Herd" brackets are required (1-MP-WS11.70(LH & RH) or 1-MP-WS11.71(LH & RH), depending on the truck). These new brackets are to replace the existing factory supplied bumper mounting brackets (Picture I).



Picture I

- 3 **Install Herd steel bracket to truck using supplied hardware** (thin shims have been provide and may be required at the outside most mounting holes to ensure the bar sits square on the truck - see Picture II)



- 4 **Verify that all mounting locations are used**
- 5 **Attach bullbar to bracket using Herd supplied hinge bolts**
* For DFLT & Defender models only: To install the hinge bolts, the bumper must be in the open (down) position to allow the bottom lip to go under and around the steel hinge.
- 6 **Check to ensure bar is level relative to a significant feature of the truck, and readjust if necessary**
- 7 **Wire driving lights to existing wiring (if applicable)**
- 8 **Insert towpin and tighten eyebolts (75-100 ft-lbs)**
- 9 **Re-check the mounting bracket and bolts after the first 5,000km and every 3-6 months.**

Eyebolts are secured in the channel with a 7/8" rubber washer. If you need to re-install the washer, insert the eyebolt into the hole, and thread a washer onto the back side of the eyebolt, approximately halfway onto the threaded part of the eyebolt.