



# INSTALLATION INSTRUCTIONS

## WESTERN STAR

Item #	Vehicle Description
WS15	Western Star 4900 SA 22000lb Front Axle

### **IMPORTANT**

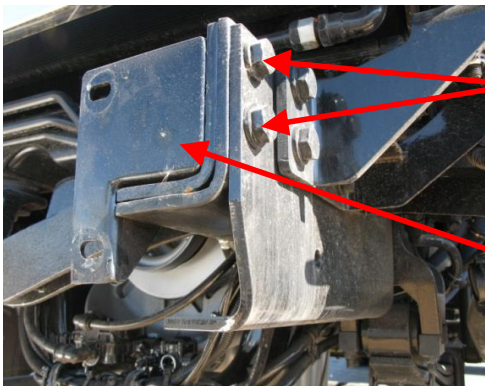
- A** Herd Bullbars are vehicle "Make & Model" specific. Use of a bullbar on a vehicle other than the model it was designed for will constitute improper use of the product and may void warranty.
- B** Unless otherwise specified, Grade 8 hardware is to be used. For the purposes of these instructions, OE hardware means the truck's original factory hardware.
- C** The drop-forged eyebolts are an integral part of the strength of Herd bullbars. When tightened **firmly**, they will minimize vibration and provide superior impact resistance.
- D** To help maintain the factory finish, avoid acid wash.

### Step

1 **Remove factory bumper**

2 **Install Herd steel bracket to truck using supplied hardware** *Thin shims have been provided and may be required at the inside mounting holes to ensure the bar sits square on the truck. They may also be used to ensure the side mounting plates are tight to the frame spars.*

3 **There are two frame configurations for this truck (see Below)**

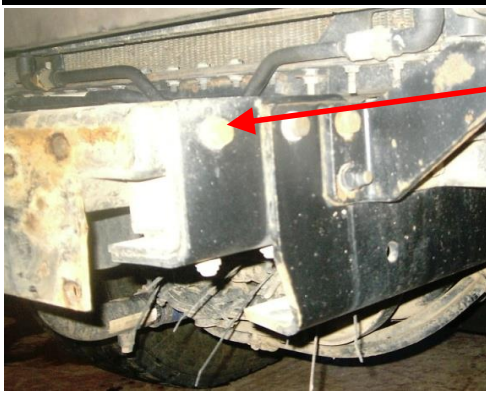


#### **FRAME TYPE I**

*There are two (2) mounting holes at the front of this frame, both are used.*

*If these brackets are not supplied additional auxiliary mounts are required:*

*1-MP-WS15.25.L & 1-MP-WS15.25.R*



## **FRAME TYPE II**

*There is only one(1) mounting hole at the front of this frame, the bottom hole on the Herd supplied mounting bracket is not used on this frame type.*

*Additional auxiliary mounts 1-MP-WS15.25.L & 1-MP-WS15.25.Rare not required for Frame Type II.*

- 4** *Attach bullbar to bracket using Herd supplied hinge bolts*  
*\* For DFLT & Defender models only: To install the hinge bolts, the bumper must be in the open (down) position to allow the bottom lip to go under and around the steel hinge.*
- 5** *Check to ensure bar is level relative to a significant feature of the truck, and readjust if necessary*
- 6** *Wire driving lights to existing wiring (if applicable)*
- 7** *Insert towpin and tighten eyebolts (75-100 ft-lbs)*
- 8** *Re-check the mounting bracket and bolts after the first 5,000km and every 3-6 months.*

*Eyebolts are secured in the channel with a 7/8" rubber washer. If you need to re-install the washer, insert the eyebolt into the hole, and thread a washer onto the back side of the eyebolt, approximately halfway onto the threaded part of the eyebolt.*