



INSTALLATION INSTRUCTIONS

WESTERN STAR

Item #	Vehicle Description
WS19,WS21	Western Star 4900 SB AND SF

IMPORTANT

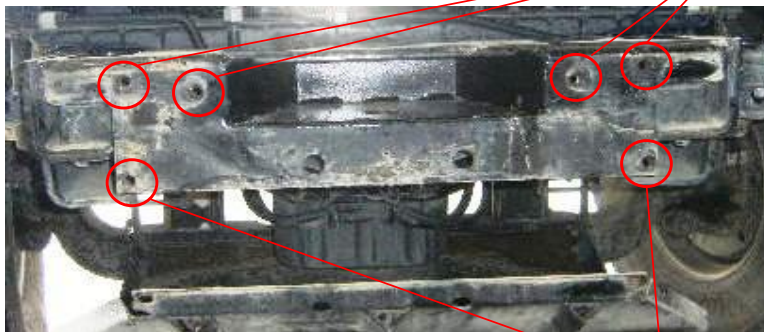
- A** Herd Bullbars are vehicle "Make & Model" specific. Use of a bullbar on a vehicle other than the model it was designed for will constitute improper use of the product and may void warranty.
- B** Unless otherwise specified, Grade 8 hardware is to be used. For the purposes of these instructions, OE hardware means the truck's original factory hardware.
- C** The drop-forged eyebolts are an integral part of the strength of Herd bullbars. When tightened firmly, they will minimize vibration and provide superior impact resistance.
- D** To help maintain the factory finish, avoid acid wash.

Step

1 *Remove factory bumper and factory driving lights (if applicable).*

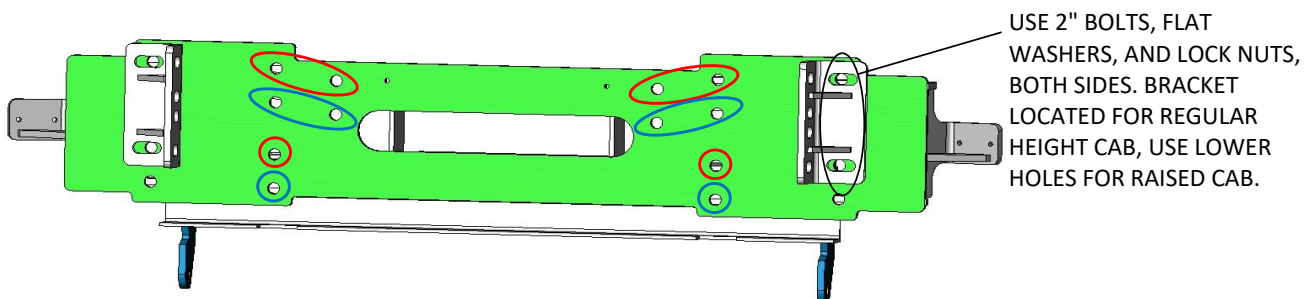
2 *Install Herd steel bracket to truck using supplied hardware. TIGHTEN ALL BOLTS TO 110 FT-LB*

USE 1-1/2" BOLTS AND LOCK WASHERS WITH FLAT WASHERS



USE 2" BOLTS, FLAT WASHERS, AND LOCK NUTS

3



USE 2" BOLTS, FLAT WASHERS, AND LOCK NUTS, BOTH SIDES. BRACKET LOCATED FOR REGULAR HEIGHT CAB, USE LOWER HOLES FOR RAISED CAB.

USE RED CIRCLED MOUNTING AREAS FOR REGULAR HEIGHT CABS
USE BLUE CIRCLED MOUNTING AREAS FOR RAISED HEIGHT CABS

4 *Verify that all mounting locations are used.*



REMOVE AND REPLACE FIRST BOLT EACH SIDE WITH 2-1-2" BOLTS, FLAT WASHERS, AND LOCK NUTS

5 *Attach bullbar to bracket using Herd supplied hinge bolts*

** For DFLT & Defender models only:* To install the hinge bolts, the bumper must be in the open (down) position to allow the bottom lip to go under and around the steel hinge.

6 *Check to ensure bar is level relative to a significant feature of the truck, and readjust if necessary*

7 *Wire driving lights to existing wiring (if applicable)*

8 *Insert towpin and tighten eyebolts (75-100 ft-lbs)*

9 *Re-check the mounting bracket and bolts after the first 5,000km and every 3-6 months.*

Eyebolts are secured in the channel with a 7/8" rubber washer. If you need to re-install the washer, insert the eyebolt into the hole, and thread a washer onto the back side of the eyebolt, halfway onto the threaded part of the eyebolt.