



INSTALLATION INSTRUCTIONS

WESTERN STAR

| Item # | Vehicle Description |
|--------|-----------------------|
| WS23 | Western Star 5700 SBA |

IMPORTANT

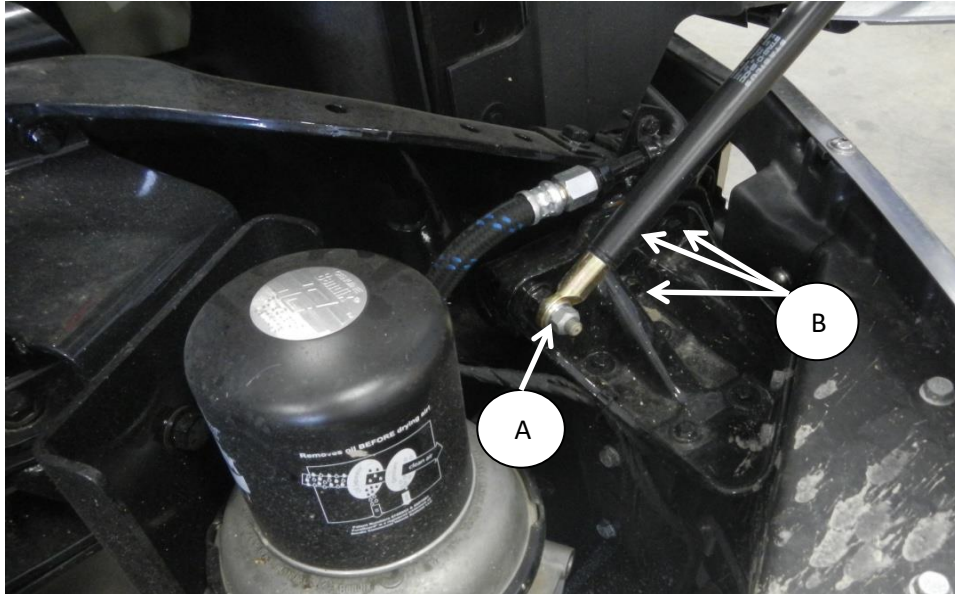
- A** Herd Bumpers are vehicle "Make & Model" specific. Use of a bumper on a vehicle other than the model it was designed for will constitute improper use of the product and may void warranty.
- B** Unless otherwise specified, Grade 8 hardware is to be used. For the purposes of these instructions, OE hardware means the truck's original factory hardware.
- C** The drop-forged eyebolts are an integral part of the strength of Herd bullbars. When tightened firmly, they will minimize vibration and provide superior impact resistance.
- D** To help maintain the factory finish, avoid acid wash.

Step

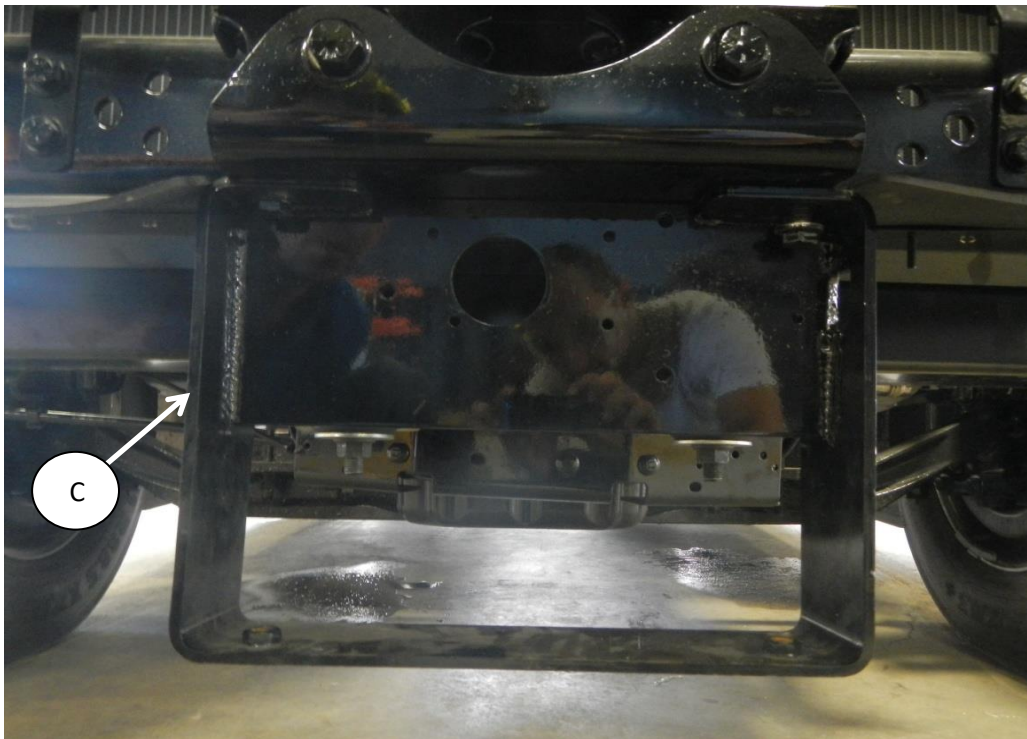
- 1 *Disconnect wiring to factory driving lights both sides of factory bumper (if equipped).*



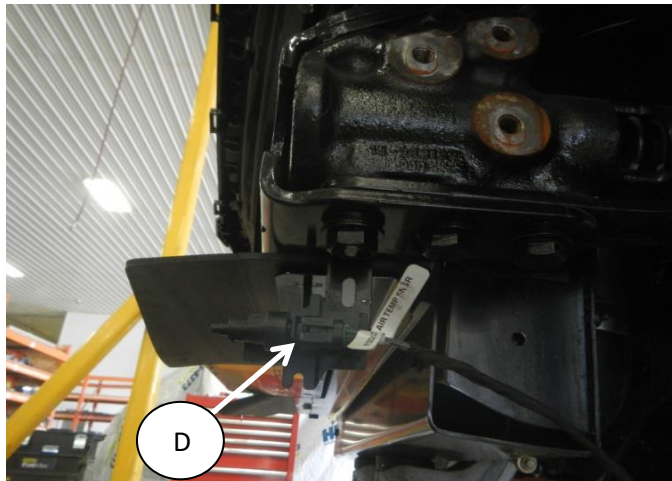
- 2 With hood open remove factory hood struts and hardware (A) from OEM mount (retain factory hardware for reuse on narrow rad version trucks **ONLY**). Remove factory bumper from truck by removing 3 bolts (B) per side as shown.



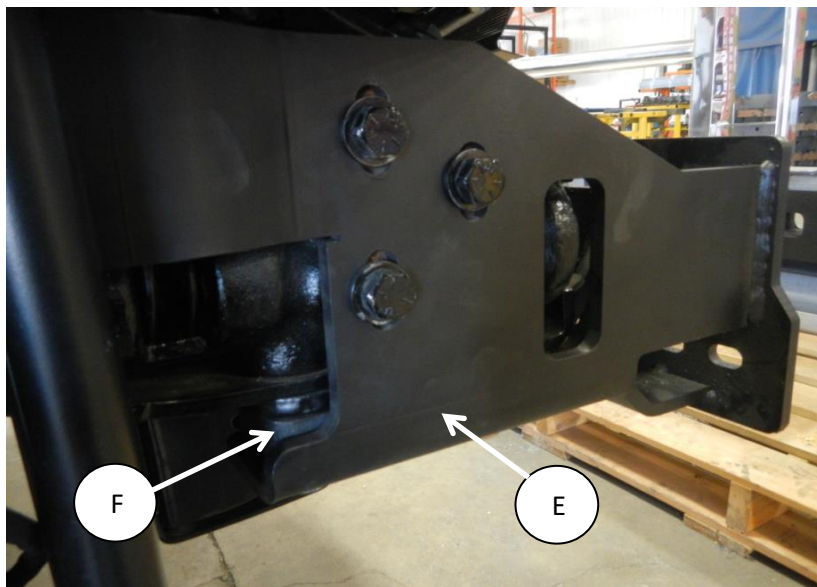
- 3 For Narrow Rad version trucks **ONLY**, remove factory Collision avoidance bracket (C) from underside of truck front.
NOTE: If truck has come equipped with the radar unit, HERD special bracket should have been order which will accomodate the remounting of the system.



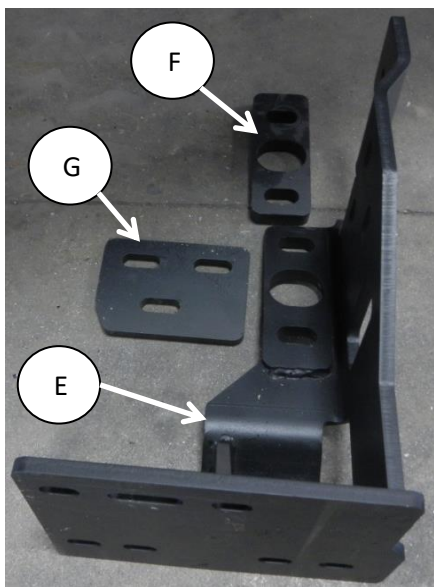
- 4 Remove sensor (D) from factory position and retain for remounting later in instruction.



- 5 Install Herd supplied sub mount brackets (E) to each side of truck using supplied 5/8 x 3 inch bolts and flatwashers from underside of frame with spacer plate (F) inserted under frame channel using factory hardware on narrow rad version of truck, or supplied 1/2" x 1-1/2" hex bolts and flatwashers on side of frame on wide rad version of truck when spacer plate (G) is to be inserted as noted below.
NOTE: Side spacer plate (G) is only used for wide rad / high horsepower models of the 5700, for narrow rad version this part can be discarded.

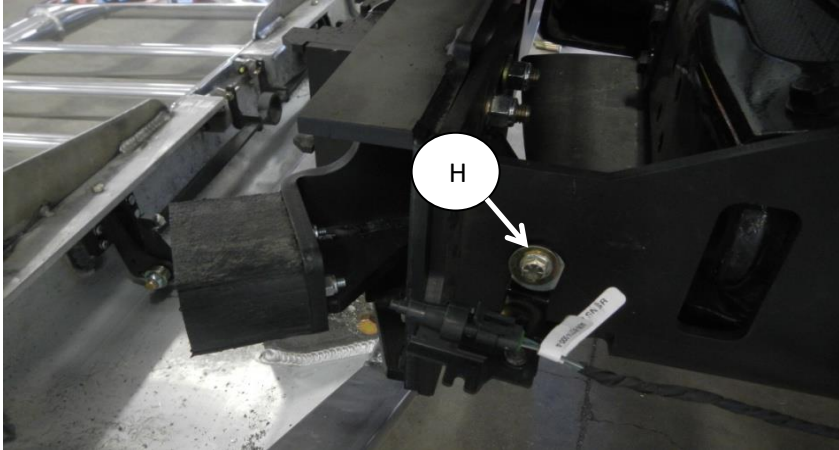


Narrow Rad version mounting shown

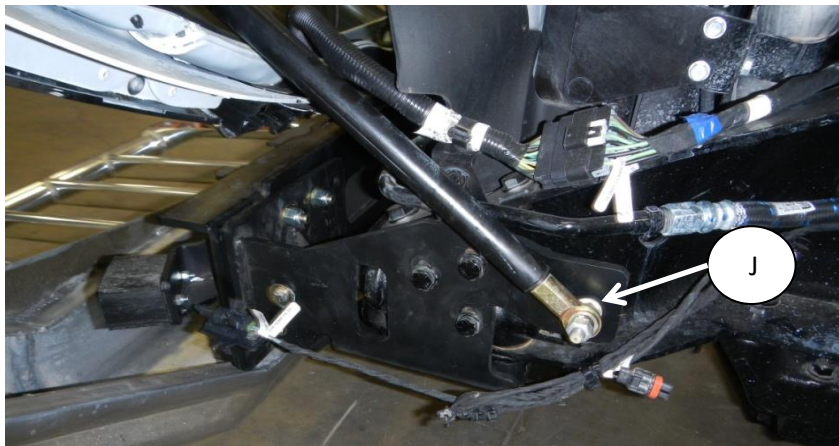


- 6 Verify that all mounting locations are used and tighten all hardware.

- 7** *Attach sensor (H) to Herd driver side submount using 5/16" x 1-1/4" hex bolt, 1/2" flat washer, 5/16" flat washers and 5/16" hex nut as shown.*



- 8** *Attach hood struts (J) to Herd submounts with factory retained hardware as shown.*



- 9** *Attached Herd bumper bracket to submounts using 1/2" x 2" hex bolts, flat washers and nylock nuts provided (leave hardware hand tight until after step 11 to ensure there is no interference with bumper and truck fenders when bumper is opened and closed).*
- 10** *Attach Herd bumper to bracket hinges using Herd supplied hinge bolts.*
- Check to ensure bar is level relative to a significant feature of the truck, and readjust if necessary.*
- 11** *NOTE: Additional washers may be required for spacers due to differences and positioning of OEM frame castings which you are mounting to.*
- 12** *Tighten all hardware installed in step 9.*

- 13** *Mount OEM driving lights to Herd supplied brackets and mount to backside of bumper channel (if applicable). Wire driving lights to existing wiring (if applicable)*



- 14** *Insert towpin (CEB and Slam Latch models) and tighten eyebolts (only applicable to CEB model to 75-100 ft-lbs).*
- 15** *Re-check the mounting brackets and bolts after the first 5,000km and every 3-6 months.*

CEB option bumpers - Eyebolts are secured in the channel with a 7/8" rubber washer. If you need to re-install the washer, insert the eyebolt into the hole, and thread the washer onto the back side of the eyebolt, halfway onto the threaded part of the eyebolt.