

# HERD Truck Guard Captive Eyebolt (CEB) Installation Procedure

- This document shows how to install a Captive Eyebolt (CEB) Bracket and Eyebolts on your Gen 3 Truck Guard.
- Ensure that you have completely read and understand document **S017 - Safety** before beginning this adjustment procedure.

## I. CEB Installation Procedure

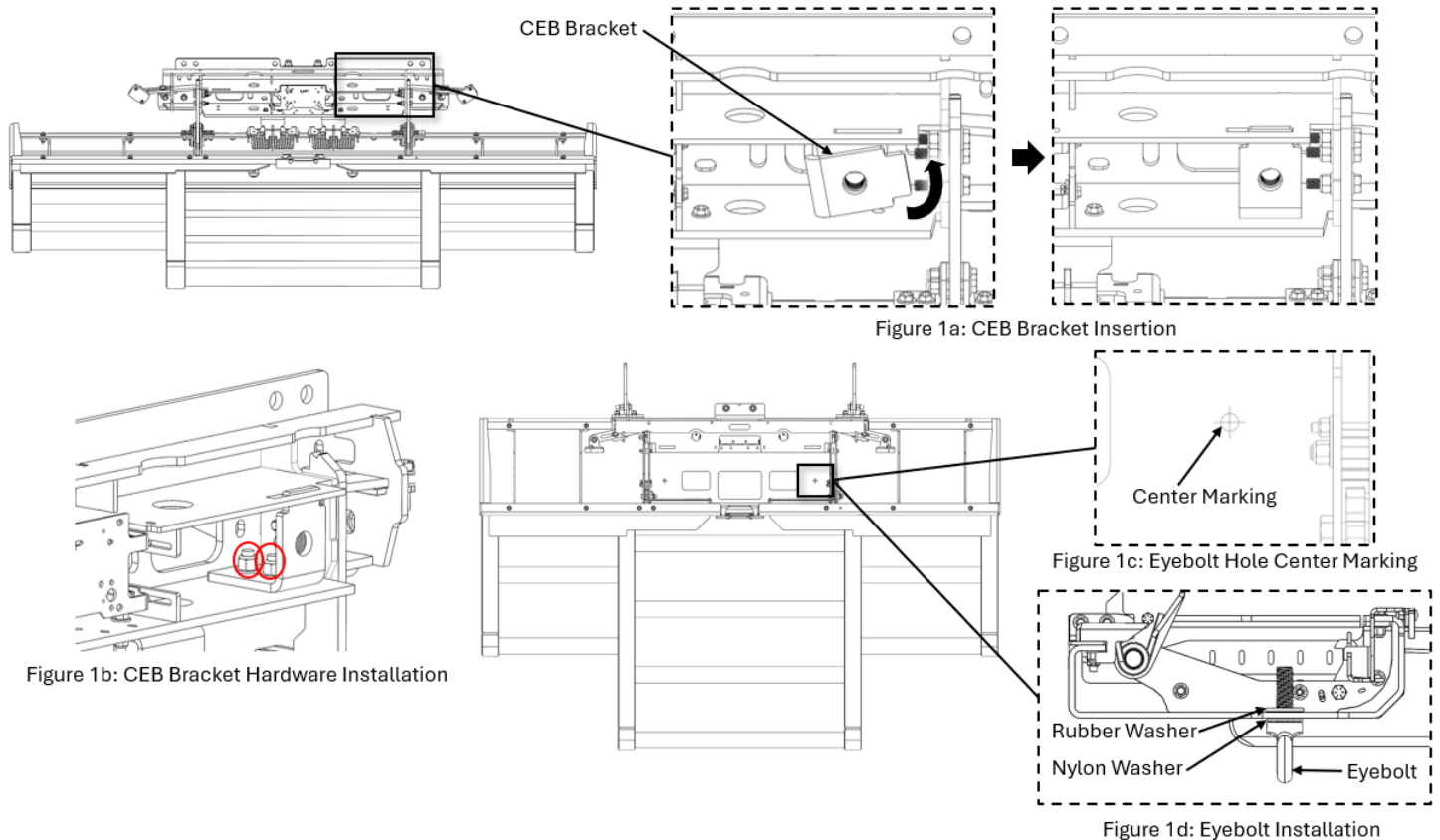


Figure 1: CEB Installation Procedure

1. Open your Truck Guard and locate the slot and bolt holes for the Captive Eyebolt (CEB) Bracket; see Figure 1a.
2. Insert your CEB Bracket sideways into your Truck Guard's Bracket such that the tab is perpendicular to the slot. Rotate the CEB Bracket to allow the tab to go into the slot in the Truck Guard's Bracket; see Figure 1a.
3. Adjust the CEB Bracket to align with the 2 bolt holes in the bracket. Once they are aligned, install the provided 1/2" hardware in the locations shown in Figure 1b.

**Torque the 1/2" hardware to 96 ft-lb.**

4. If your Truck Guard does not have holes to accommodate Eyebolts, locate the cross-shaped markings on the inside face of the Truck Guard; see Figure 1c. Use a 1-1/4 inch hole saw centered on the marking to drill out holes for your Eyebolt. If your Truck Guard already has holes to accommodate Eyebolts, you may skip this step.
5. Repeat Step 1 to Step 4 for the other side if required.
6. Once both sides' CEB Brackets have been installed, insert the Eyebolts into the Truck Guard. Ensure the Rubber Washer is on the inside face of the Truck Guard; see Figure 1d.
7. Close the Truck Guard and install the Eyebolts into the CEB Brackets. Securely fasten your Eyebolts into the CEB Brackets. The Truck Guard's Tow Pins can be used to provide additional torque when clamping the Eyebolts.

**Important: Check mounting points' hardware after the first 5000 km and every 3-6 months. Re-torque if necessary.**