

- This document shows how to install your new Truck Guard onto your truck.
- Ensure that you have completely read and understood document **S017 - Safety** before beginning this installation procedure.

I. Removing the OEM Front Bumper



Figure 1a: Front Bumper Fasteners

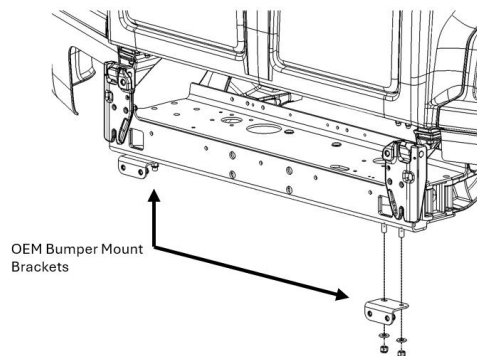


Figure 1b: OEM Bumper Mount Bracket Removal

Figure 1: Removing the OEM Front Bumper (Your Truck may not be exactly as shown)

1. If your truck is equipped with a center tow section, remove it. Remove the OEM front bumper by removing the circled bolts shown in Figure 1. As a note, some trucks will have 8 front bumper fasteners. Retain the removed hardware for later use.
2. Identify how many front bumper fasteners were removed in Step 1.
For trucks with 6 front bumper fasteners, remove the OEM bumper mount brackets; see Figure 1b. Ensure the removed hardware is retained, then proceed to Section II.
For trucks with 8 front bumper fasteners, proceed to Section III.

II. Installing HERD Submounts and Truck Guard on a truck with 6 front bumper fasteners.

Installation for Trucks with 6 Front Bumper Fasteners

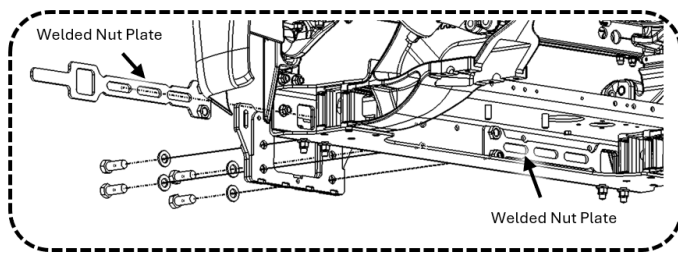


Figure 2a: Welded Nut Plate Installation – Rear View
(Your Crossmember may not be Exactly as Shown)

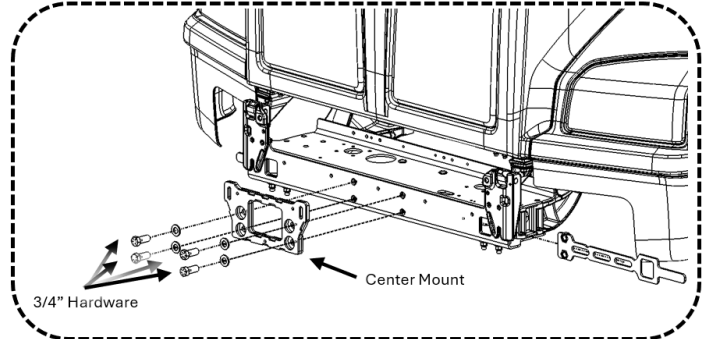


Figure 2b: Center Mount Installation

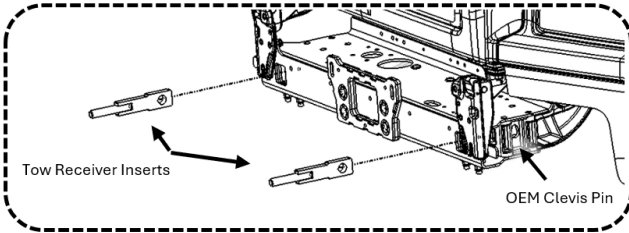


Figure 2c: Tow Receiver Installation

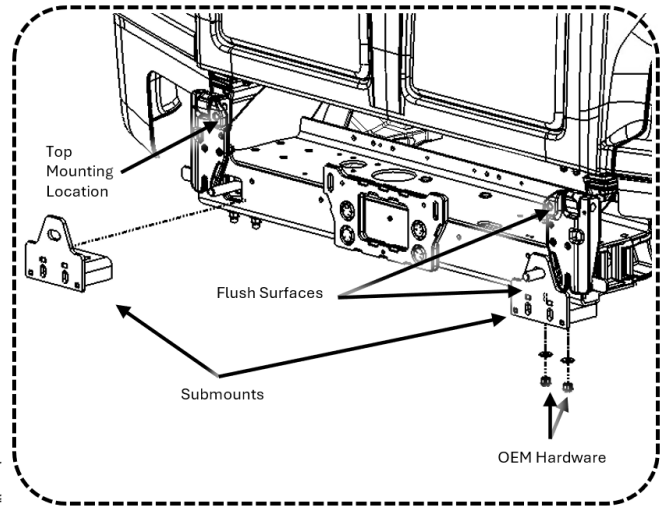


Figure 2d: Submount Installation

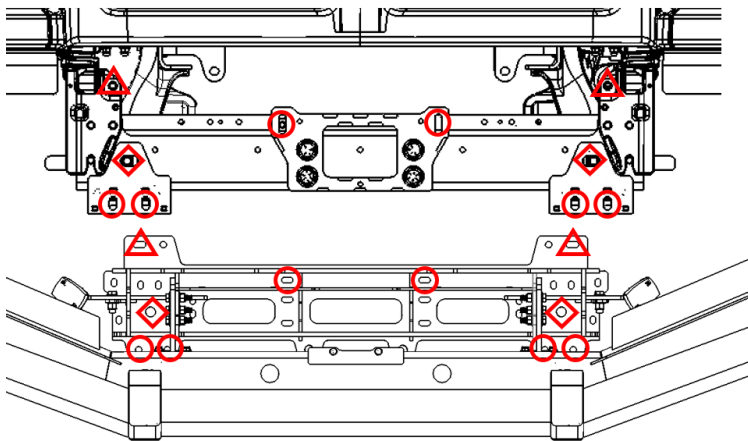


Figure 2e: Main Bracket Mounting – Truck with 6 Front Bumper Fasteners
(Your Bracket may not be Exactly as Shown)

Figure 2: HERD Submounts and Truck Guard Installation

For trucks with 6 front bumper fasteners:

1. If the truck is equipped with Collision Avoidance System (CAS), disconnect the radar sensor and remove it. Retain the radar sensor and hardware for later use.
2. Place the Welded Nut Plate behind the crossmember and use 3/4" provided Hardware to secure the Center Mount into the Welded Nut Plate; see Figure 2a and Figure 2b.

Torque the 3/4" Hardware to 240 ft-lb.

3. Install the Tow Receiver Inserts into the trucks' tow receivers and secure them using the OEM clevis pins; see Figure 2c.
4. Secure the Submounts to the truck using OEM hardware and ensure the Submounts are flush to the truck's top mounting locations; see figure 2d.
5. Lift the Main Bracket and Truck Guard (opened) assembly and mount it to the truck. Fasten the Main Bracket to the HERD Submounts as shown in Figure 2e. The circle locations represent the locations to use the provided 1/2" Hardware and the diamond locations indicate the locations where the bracket is secured to the Tow Receiver Inserts using the provided 3/4" Hardware. For the triangle locations, use the OEM front bumper fasteners.

Torque the 1/2" Hardware to 96 ft-lb, and the 3/4" Hardware to 240 ft-lb.

6. Install the radar sensor (if applicable) to the Herd Sensor Bracket using the Radar Sensor Bracket Installation Procedure (S009).
7. Close the Bumper and check the Slam Latch adjustment. If necessary, adjust the Slam Latch. Refer to the Truck Guard Slam Latch Adjustment Procedure (S024) to properly adjust the Slam Latch.

Important: Check mounting points' hardware after the first 5000 km and every 3-6 months. Re-torque if necessary.

III. Installing HERD Submounts and Truck Guard on a truck with 8 front bumper fasteners.

Installation for Trucks with 8 Front Bumper Fasteners

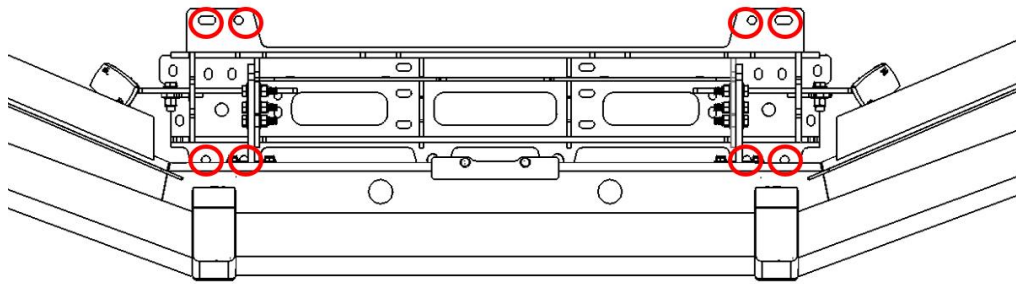
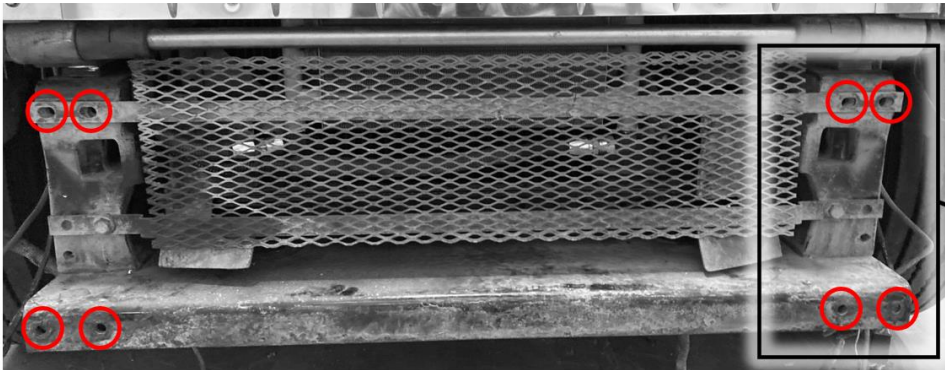


Figure 3a: Main Bracket Mounting – Truck with 8 Front Bumper Fasteners
(Your Bracket may not be Exactly as Shown)

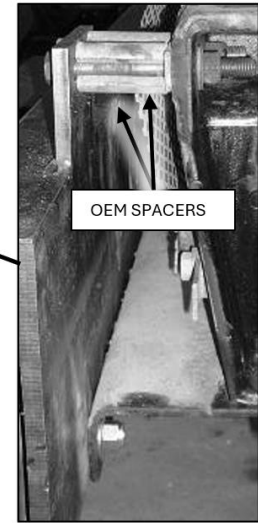


Figure 3b: OEM Spacer Installation – Driver Side View

Figure 3: HERD Submounts and Truck Guard Installation

For trucks with 8 front bumper fasteners:

1. If the truck is equipped with Collision Avoidance System (CAS), disconnect the radar sensor and remove it. Retain the radar sensor and hardware for later use.
2. Lift the Main Bracket and Truck Guard (opened) assembly and mount it to the truck. Fasten the Main Bracket to the HERD Submounts as shown in Figure 3a. The circle locations represent the locations to use the OEM front bumper fasteners. Ensure the OEM spacers are used for the top two mounting locations, on both sides, as shown in Figure 3b.
3. Install the radar sensor (if applicable) to the Herd Sensor Bracket using the Radar Sensor Bracket Installation Procedure (S009).
4. Close the Bumper and check the Slam Latch adjustment. If necessary, adjust the Slam Latch. Refer to the Truck Guard Slam Latch Adjustment Procedure (S024) to properly adjust the Slam Latch.

Important: Check mounting points' hardware after the first 5000 km and every 3-6 months. Re-torque if necessary.