

- This document shows how to install your new Truck Guard onto your truck.
- Ensure that you have completely read and understood document **S017 - Safety** before beginning this installation procedure.

## I. Removing the OEM Front Bumper



Figure 1a: Front Bumper Fasteners

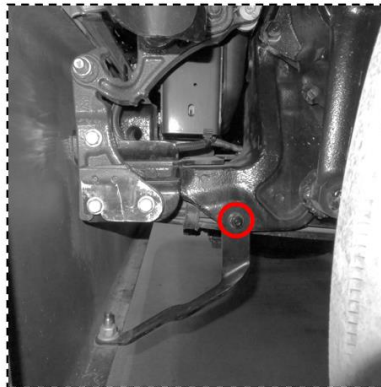


Figure 1b: OEM Bumper Side Fasteners  
(Driver Side Shown)

Figure 1: Removing the OEM Front Bumper (Your Truck may not be Exactly as Shown)

1. If your truck is equipped with a center tow section, remove it. Remove the OEM front bumper by removing the circled bolts shown in Figure 1a and the bumper side fasteners, one per side, shown in Figure 1b. Retain the removed bumper side fasteners for later use.

**II. Installing the HERD Submounts and the Truck Guard.**

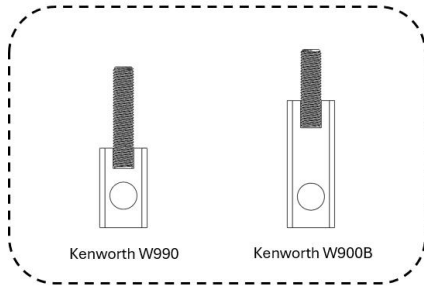


Figure 2a: Tow Receiver Insert Identification

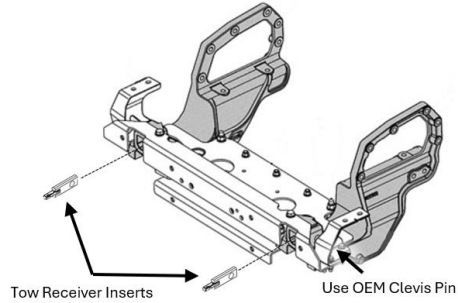


Figure 2b: Tow Receiver Insert Installation  
(Your Crossmember may not be Exactly as Shown)

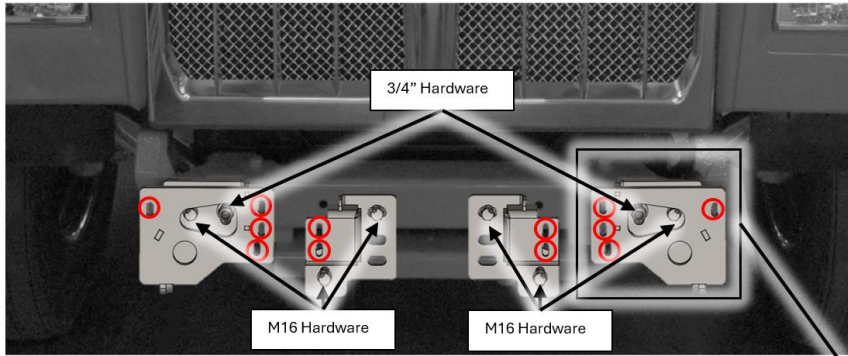


Figure 2d: Main Bracket Mounting  
(Your Bracket May Not Be Exactly As Shown)

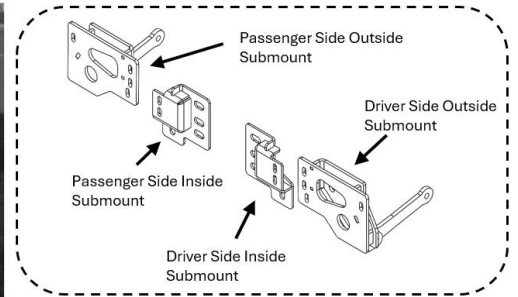


Figure 2c: Submount Diagram

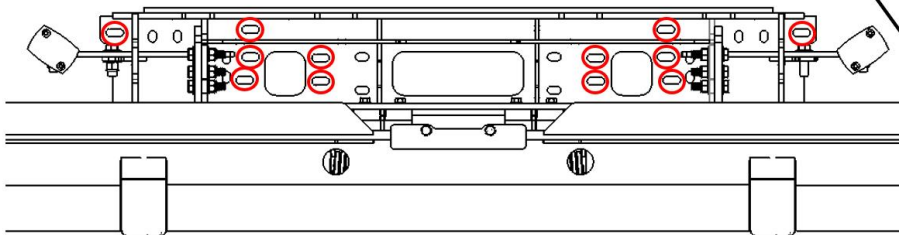


Figure 2e: Driver Side Submount Installation  
(Side View Shown)

Figure 2: HERD Submounts and Truck Guard Installation

1. If the truck is equipped with a Collision Avoidance System (CAS), disconnect the radar sensor and remove it. Retain the radar sensor and hardware for later use.
2. Identify which Tow Receiver Inserts will be used for your installation; see Figure 1a. Install the Tow Receiver Inserts into the truck's tow receivers; see Figure 2b. Secure the Inserts using the OEM clevis pins.
3. Install the Herd Driver Side Outside Submount and secure it to the crossmember using the provided M16 Hardware and 3/4" Hardware to the Tow Receiver Insert; see Figure 2c and Figure 2d. Secure the Herd Driver Side Outside Submount to the side of the trucks' frame using the OEM bumper side fastener shown in Figure 2e.

**Torque the 3/4" Hardware to 240 ft-lb.**

4. Install the Herd Driver Side Inside Submount to the frame using the provided M16 Hardware, as shown in Figure 2c. Repeat Steps 3 and 4 for the Passenger Side Outside and Passenger Side Inside Submounts respectively. See Figure 2b for Submount identification.
5. Lift the Main Bracket and Truck Guard (opened) assembly and mount it to the truck. Fasten the Main Bracket to the HERD Submounts using the provided 1/2" Hardware in the red circled locations shown in Figure 2d.

**Torque the 1/2" Hardware to 96 ft-lb.**

6. Install the radar sensor (if applicable) to the Herd Sensor Bracket using the Radar Sensor Bracket Installation Procedure (S009).
7. Close the Bumper and check the Slam Latch adjustment. If necessary, adjust the Slam Latch. Refer to the Truck Guard Slam Latch Adjustment Procedure (S024) to properly adjust the Slam Latch.

**Important: Check mounting points' hardware after the first 5000 km and every 3-6 months. Re-torque if necessary.**