

- This document shows how to install your new Truck Guard onto your truck.
- Ensure that you have completely read and understood document **S017 - Safety** before beginning this installation procedure.

## I. Removing the OEM Front Bumper



Figure 1a: Front Bumper Fasteners  
(Center Tow Section not Shown)

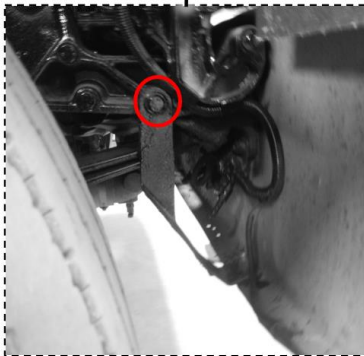


Figure 1b: OEM Bumper Side Fasteners  
(Passenger Side Shown)

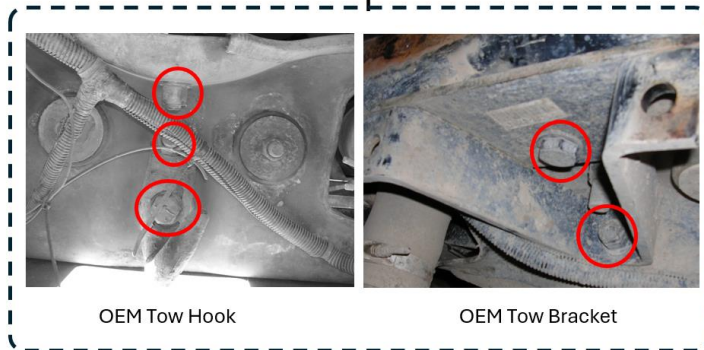


Figure 1c: OEM Tow Type  
(Viewed from Below)

Figure 1: Removing the OEM Front Bumper (Your Truck may not be exactly as shown)

1. If your truck is equipped with a center tow section, remove it. Remove the OEM front bumper by removing the circled bolts shown in Figure 1a and the bumper side fasteners, one per side; see Figure 1b. Retain the removed hardware for later use.
2. Identify your truck's OEM tow type, see Figure 1c. Whether your truck has an OEM tow hook or tow bracket, remove it by removing the corresponding circled hardware. Retain the removed hardware for later use.

II. Installing HERD Submounts and Truck Guard.

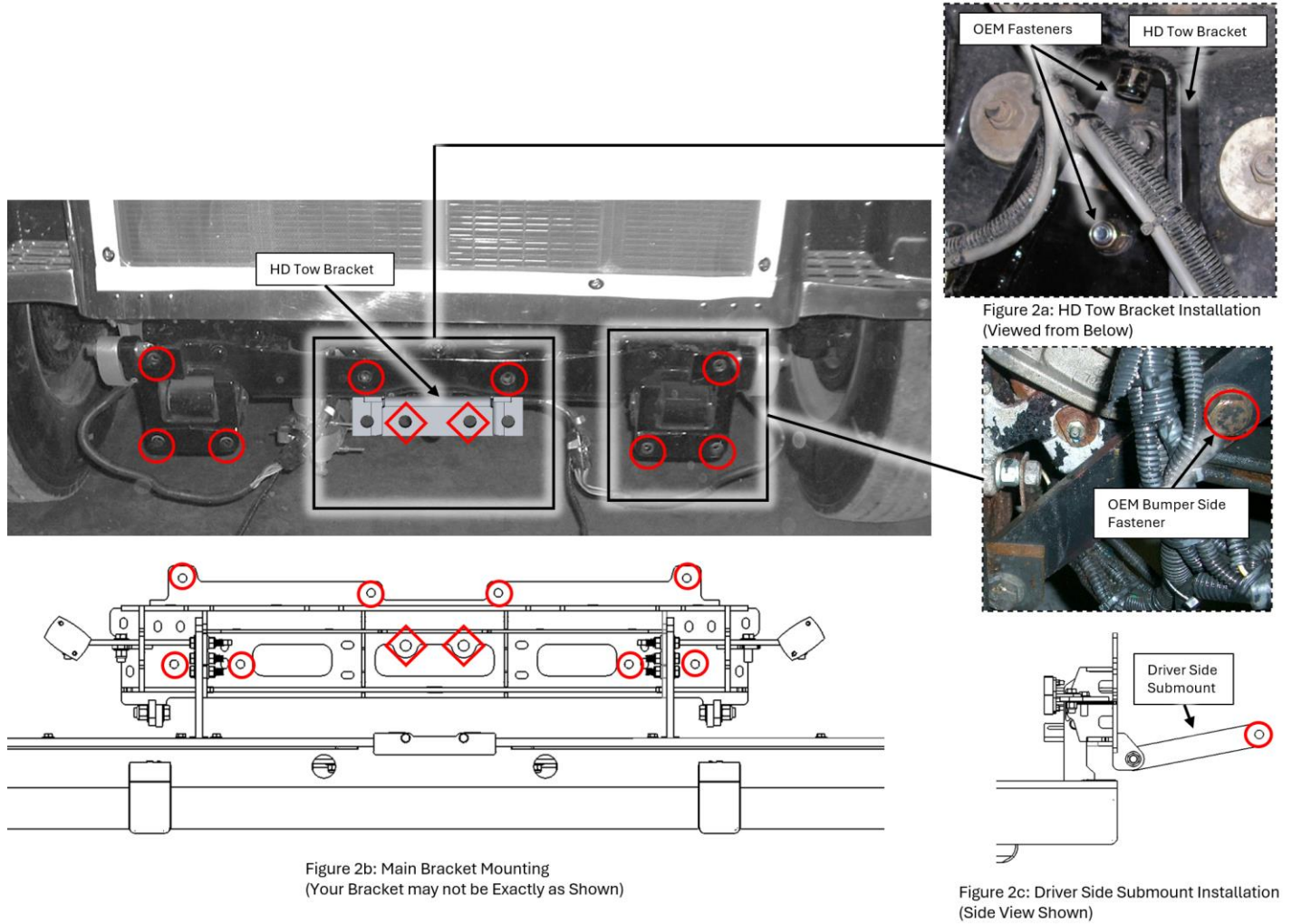


Figure 2: HERD Submounts and Truck Guard Installation

1. If the truck is equipped with Collision Avoidance System (CAS), disconnect the radar sensor and remove it. Retain the radar sensor and hardware for later use.
2. Install the provided HD Tow Bracket, using the retained OEM fasteners removed in Section 1 Step 2; see Figure 2a.
3. Lift the Main Bracket and Truck Guard (opened) assembly and mount it to the truck. Fasten the Main Bracket to the HERD Submount as shown in Figure 2b. The circles represent the locations to use retained OEM bumper fasteners. The diamonds represent the locations to use the provided 3/4" Hardware.

**Torque the 3/4" Hardware to 240 ft-lb.**

4. Install the Driver Side Submount to the side of the crossmember using the OEM bumper side fastener; see Figure 2c. Repeat this Step for the Passenger Side Submount.
5. Install the radar sensor (if applicable) to the Herd Sensor Bracket using the Radar Sensor Bracket Installation Procedure (S009).
6. Close the Bumper and check the Slam Latch adjustment. If necessary, adjust the Slam Latch. Refer to the Truck Guard Slam Latch Adjustment Procedure (S024) to properly adjust the Slam Latch.

**Important: Check mounting points' hardware after the first 5000 km and every 3-6 months. Re-torque if necessary.**