

- This document shows how to install your new Truck Guard onto your truck.
- Ensure that you have completely read and understood document **S017 - Safety** before beginning this installation procedure.

## I. Removing the OEM Front Bumper



Figure 1a: Front Bumper Fasteners



Figure 1b: OEM Bumper Fasteners  
(Passenger Side Shown)

Figure 1: Removing the OEM Front Bumper (Your Truck may not be Exactly as Shown)

1. This Truck Guard is NOT COMPATIBLE with OEM fog lights. Unplug the OEM fog light's wiring harness (if applicable).
2. Remove the OEM front bumper by removing the circled bolts shown in Figure 1a and on both sides in Figure 1b.

## II. Installing the HERD Submounts and the Truck Guard.

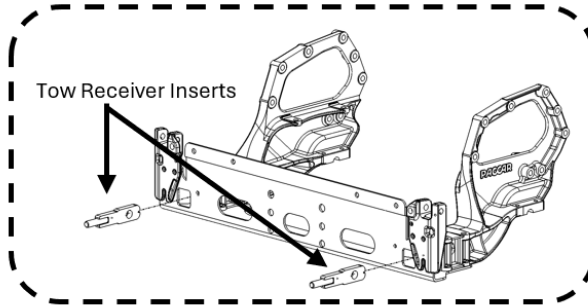


Figure 2a: Tow Receiver Insert Installation  
(Your Crossmember may not be Exactly as Shown)

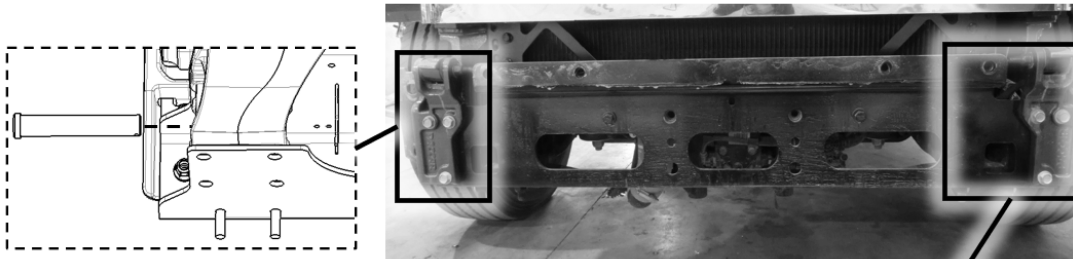


Figure 2b: Clevis & Cotter Pin Installation (Viewed from Below)

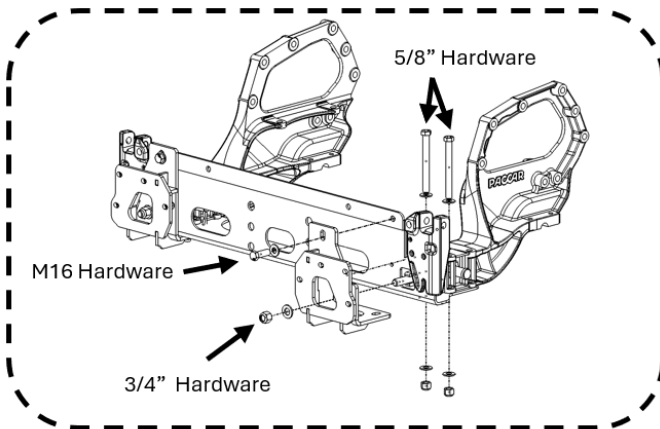


Figure 2c: Submount Installation  
(Your Crossmember may not be Exactly as Shown)

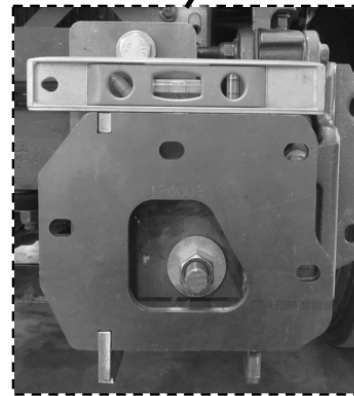


Figure 2d: Submount Installation II  
(Driver Side Shown)

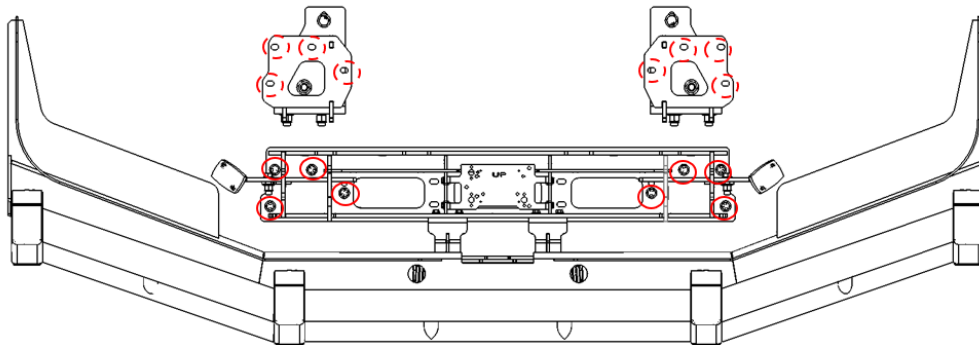


Figure 2e: Main Bracket Mounting  
(Your Bracket may not be Exactly as Shown)

Figure 2: HERD Submounts and Truck Guard Installation

1. If the truck is equipped with a Collision Avoidance System (CAS), disconnect the radar sensor and remove it. Retain the radar sensor and hardware for later use.
2. Install the Tow Receiver Inserts into the trucks' tow receivers; see Figure 2a. Secure the Inserts using the provided Clevis Pins and Cotter Pins as shown in Figure 2b.
3. Install the Herd Submount and secure it to the crossmember using the provided M16 Hardware and 3/4" Hardware to the Tow Receiver Insert. Secure the Submount to the frame using the provided 5/8" Hardware and ensure the Submount is level relative to the trucks' frame; see Figure 2c and Figure 2d. Repeat this step for both Submounts.

**Torque the 3/4" Hardware to 240 ft-lb, and 5/8" Hardware to 190 ft-lb.**

4. Lift the Main Bracket and Truck Guard (opened) assembly and mount it to the truck. Fasten the Main Bracket to the HERD Submounts using the provided 1/2" Hardware as shown in Figure 2e.

**Torque the 1/2" Hardware to 96 ft-lb.**

5. Install the radar sensor (if applicable) to the Herd Sensor Bracket using the Radar Sensor Bracket Installation Procedure (S009).
6. Close the Bumper and check the Slam Latch adjustment. If necessary, adjust the Slam Latch. Refer to the Truck Guard Slam Latch Adjustment Procedure (S024) to properly adjust the Slam Latch.

**Important: Check mounting points' hardware after the first 5000 km and every 3-6 months. Re-torque if necessary.**